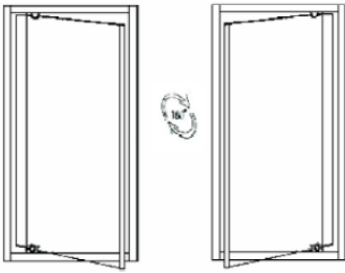




Henrybrooks Adjusta Shower Door

Installation Instructions for Door & Return

This unit has reversible doors which can be hung left or right.

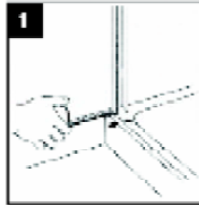


Note: (5 & 6) Ensure the slope on the sill, slopes inward, and that the door panel opens outwards.

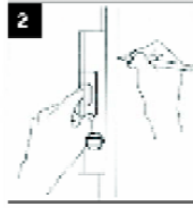
(8 & 9) It is at this stage that you have the opportunity to adjust both the door and the side screens to their optimum position. Use a level to ensure all jambs are plumb and level. There is considerable adjustment in both door and sidescreen wall channels, as well as the corner connecting extrusions.

NOTE: The door has 2 channels, use only 1 for a 2 sided shower. Discard the second channel.

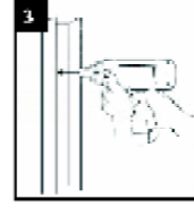
Check the operation of the unit to ensure all works correctly. Thoroughly clean the work area prior to water sealing the unit.



1 Remove the wall channels from the door and/or screen and position them 10mm in from the outside edge of the tray.



2 Determine the level position for the channels and mark on the lining with a pencil.



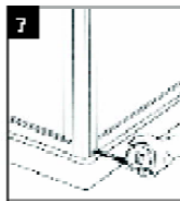
3 Using a 3 mm drill bit, drill through the wall channels and into the wall lining.



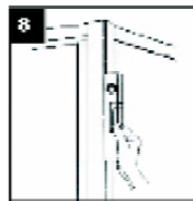
4 Fix linings to the wall using the screws supplied.



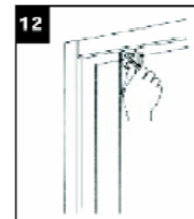
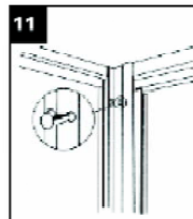
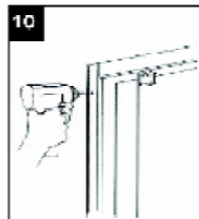
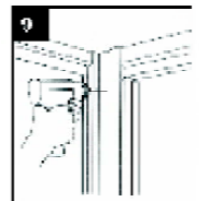
5 Determine which way you want the door to open (door is reversible by simply turning the whole unit upside down). Present the door onto the shower tray and insert into the wall channel.



7 Repeat the above procedures for any side screens, ensuring again that the finished position is 10 mm in from the outside edge of the shower tray. Check for level.

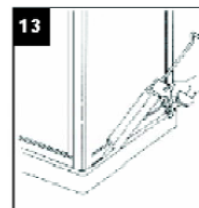


8 Present the side screen into the fixed wall channel and then fit the corner connecting extrusion (either 90° or 45°) onto the door jamb.



Using the same 3mm drill bit, use the stainless steel screws provided, and fix the side screen to the wall channel and the door to the door wall channel. Finally, once again ensuring everything is plumb and level, fix the door and side screen together with the corner connecting extrusion.

Do Not place silicone sealer on the inside of the shower enclosure.



The unit must only be sealed around the **OUTSIDE** perimeter of the door and screen both against the tray and the wall lining. Use only a fine but consistent bead of silicone and smooth off with your finger.



Thankyou for your order

Ph. 09 913 3110 Fax. 09 913 3113
5 Smales Rd, East Tamaki, Manukau
P.O.Box 58031 Greenmount, Manukau 2141

AUCKLAND // WELLINGTON // CHRISTCHURCH