

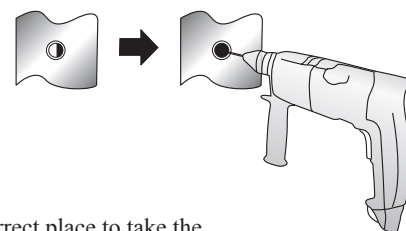


⚠ ATTENTION




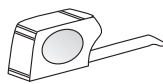

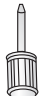



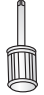






Read Instructions!

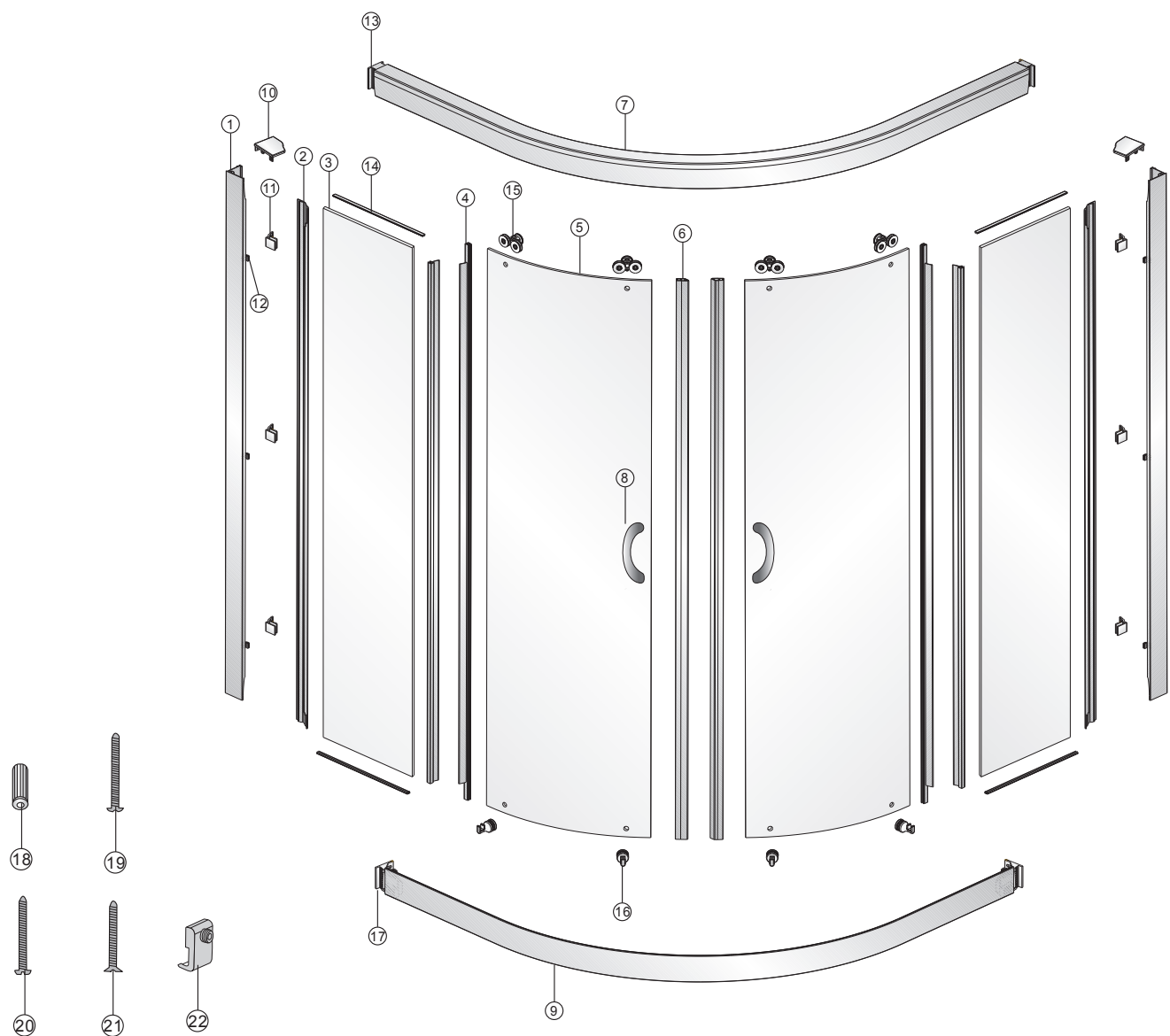
Unpack shower door and ensure there is no transport or handling damage to the product.
(Contact the supplier immediately if there is any damage)

Make sure there is substantial timber framing in the wall behind the Gib board, in the correct place to take the shower door fixing points. If there is not adequate timber framing you will need to find an alternative way of attaching the shower door to the wall, using wall plugs

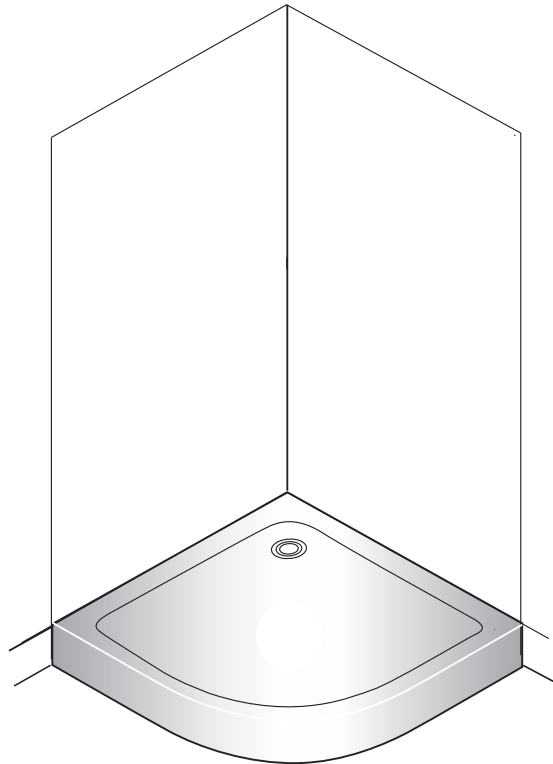


Tools Required for Assembly & Installation

Tools	Pictures	Tools	Pictures	Tools	Pictures	Tools	Pictures
Electronic Driller		Flat Filing		Knives		Tapes	
Hammer		Flat Screwdriver		Rubber Hammer		Plastic Board	
Monkey wrench		Cross Screwdriver		Silicone		8mm Driller	
Pliers		Level		Pencil		3.2mm Driller	

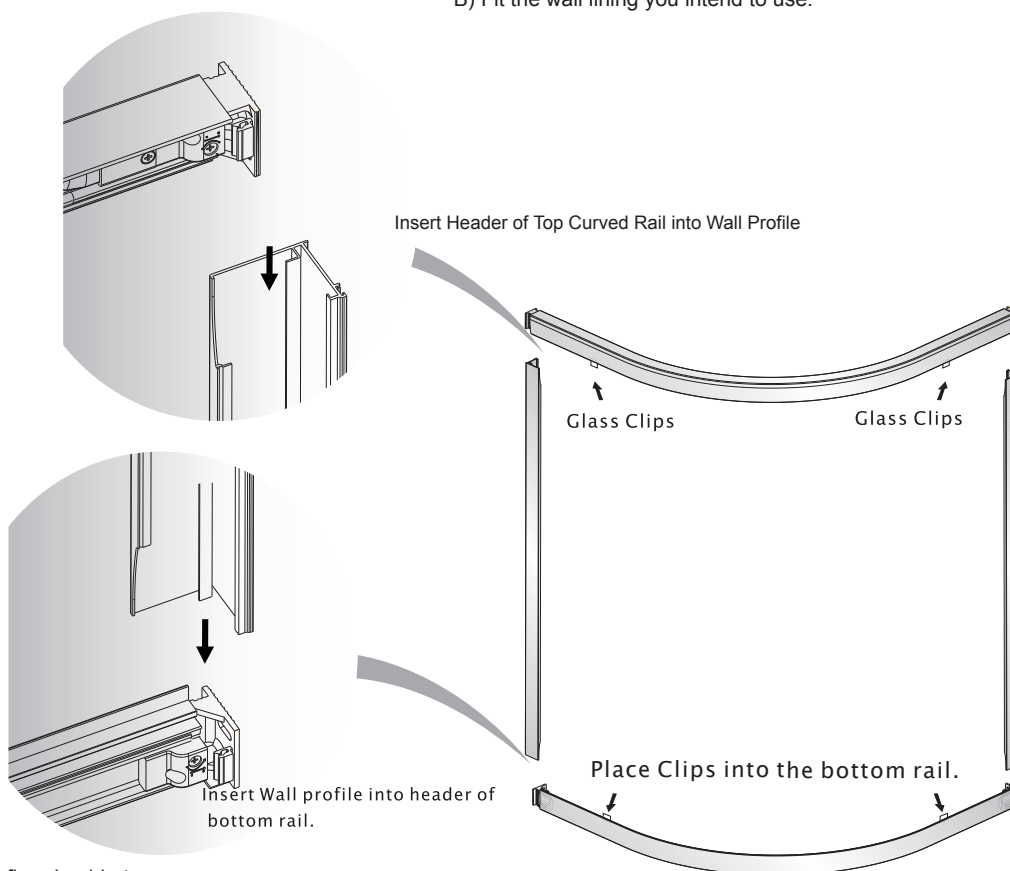


Part No#	Description	Q'ty	Part No#	Description	Q'ty	Part No#	Description	Q'ty
1	Wall Profile	2	9	Bottom Rail	1	17	Adjustable Header for Bottom Rail (L/R)	2
2	Cover Profile	2	10	Top Cover caps	1	18	Wall Plug	8
3	Fixed Glass Panel	2	11	Top Cover caps	6	19	M4 x 35 Screws	8
4	Water-proof seals stripes	2	12	Clips (for Fixing Glass)	6	20	M4 x 35 Screws	8
5	Glass Door Panel	2	13	Clips (For Fixing Profiles)	2	21	M4 x 30 Screws	6
6	Magnetic Sealing Gasket	1	14	Glazing Seal Stripes	4	22	Glass Clips (For Fasten Glass)	4
7	Top Rail	1	15	Sliding Wheels	2			
8	Handle	1	16	Bottom Guide	2			



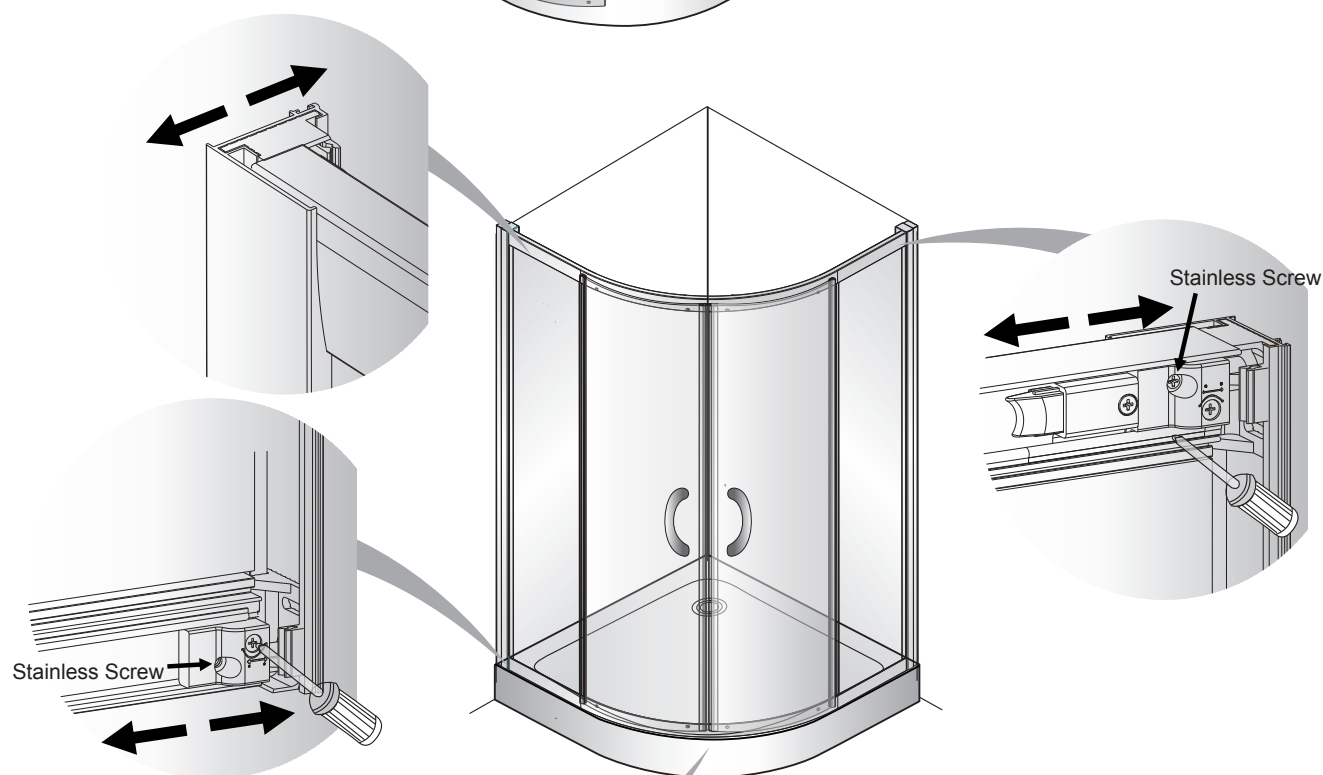
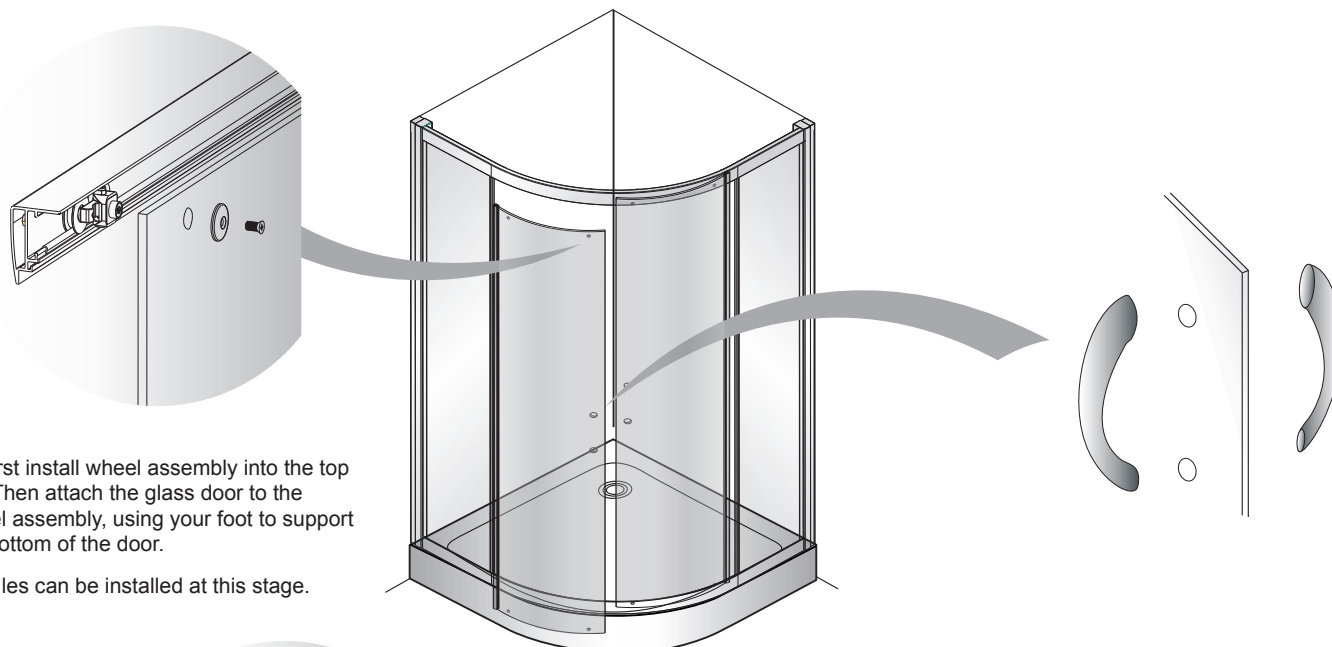
A) Have a qualified Plumber install the shower tray, and make sure it is level.

B) Fit the wall lining you intend to use.

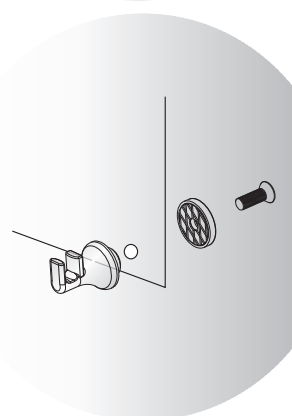


C) Assemble Frame on floor beside tray.

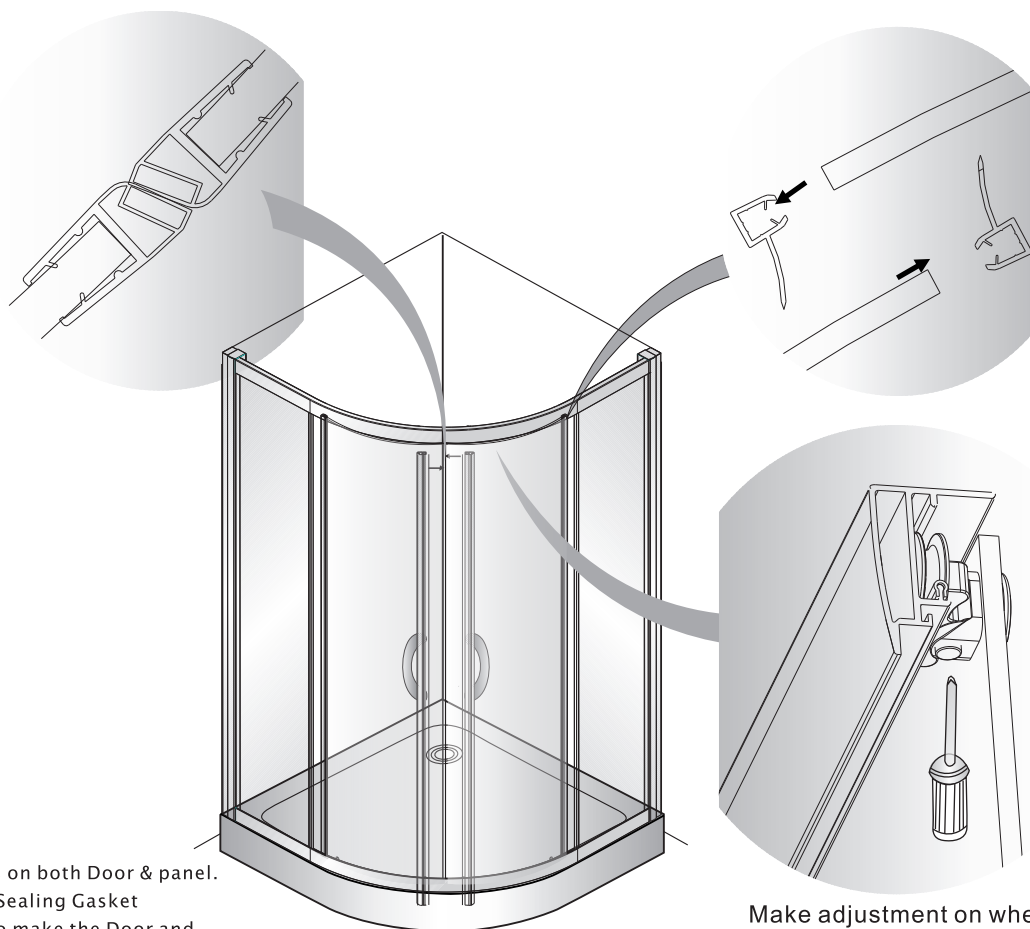
- a. Please distinguish top & bottom rail.
- b. Please distinguish wall profile left & right
- c. Assemble top & Bottom rail by connecting header.



B) You will see at the ends of both the rails a plastic fitting. This is used to adjust the frame in or out from the wall to compensate for any out of alignment (plumb) you may have in your wall.

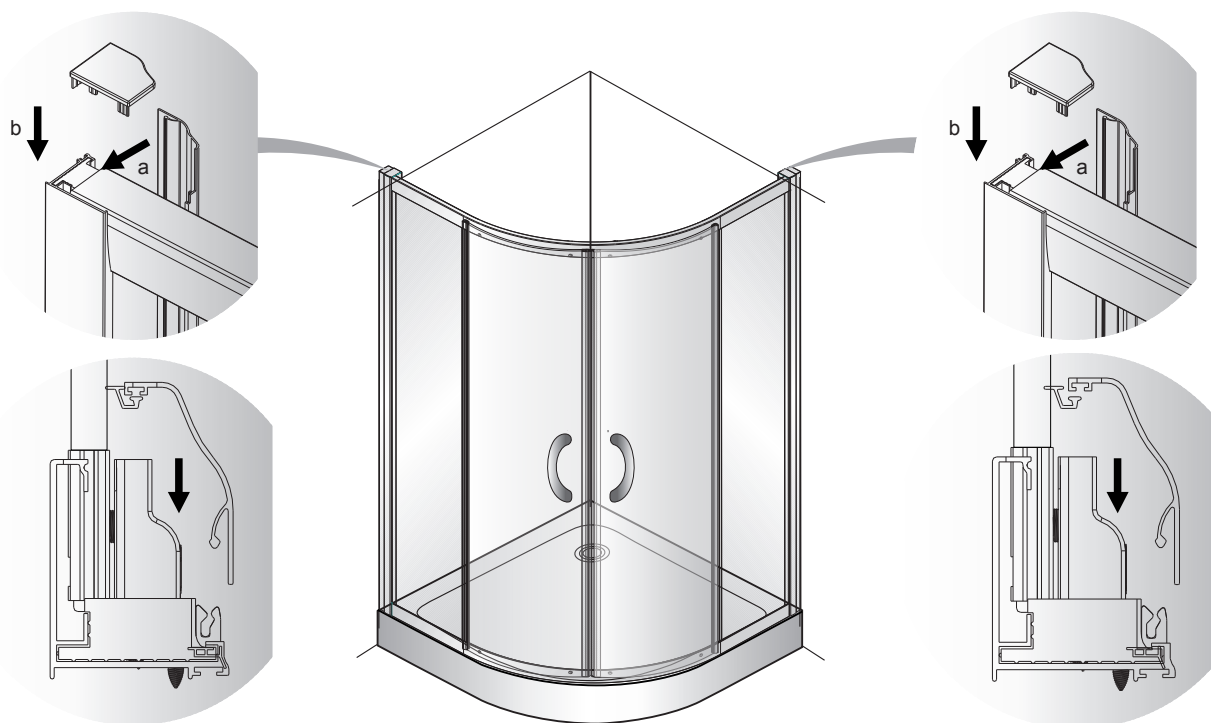


Engage the plastic Philips head next to the stainless screw to adjust in towards the wall or out, away from the wall. Standing outside the shower looking in, the left hand top adjustment screw needs to be turned clockwise to move frame away from wall and anti clockwise to move frame towards the wall. The bottom adjustment is clockwise to move frame towards wall and anti clockwise to move frame away from wall. The top right hand adjustment is clockwise to move frame towards wall and anti clockwise to move frame away from wall Bottom right hand is clockwise for away from wall and anti clock wise for towards the wall. When the adjustment is done, make sure the glass fixed panels are positioned correctly in the top and bottom rails with gaskets.



- A) Install Water Proof seal stripes on both Door & panel.
 B) Install Magnetic Door Closing Sealing Gasket
 C) Make adjustment on wheels, to make the Door and Profile are parallel and water-tight closing.

Make adjustment on wheels.



- D) After checking everything is in good order, install Cover Profile and Top End Covers.



Please wait for 24 hours before use the shower.

A) Coating Silicone

