

BATHROOMDIRECT

RENOVATIONS + INSTALLATIONS + OUTLET STORE

DIRECT FROM THE MANUFACTURER

Dreamline Cube Shower Door

Installation Guide



Tiled Wall Installation



Acrylic Wall Installation

The Cube Shower Door is suitable for both L/H and R/H installations

Thank you for your order

BATHROOMDIRECT

RENOVATIONS + INSTALLATIONS + OUTLET STORE

DIRECT FROM THE MANUFACTURER

PH: 09 913 3110 FAX: 09 913 3113
5 Smales Road East Tamaki, Manukau
P.O. Box 58031 Botany 2163

AUCKLAND // WELLINGTON // CHRISTCHURCH

www.bathroomdirect.online

Dreamline Shower Enclosure

Preparation

It is recommended that 2 people install this shower door as the glass panels are heavy.

The Shower Door install will be much easier if your walls are vertical, square and at right angles to the floor.

1. After opening the boxes, read this introduction carefully, check all the packed parts are complete by cross checking all the components against the "Shower Enclosure Components" page. Examine for shipping damage. If the unit has been damaged, has a finishing defect or has missing parts please contact your local distributor.

Do Not install Damaged Parts as the warranty will be voided.

2. You must have all the correct plumbing and drainage components installed before you start to install the shower doors.
3. Please ensure prior to installation, that the installation surface is true and level, and robust enough to support the total weight of the shower unit. Also make sure the walls are true and plumb.

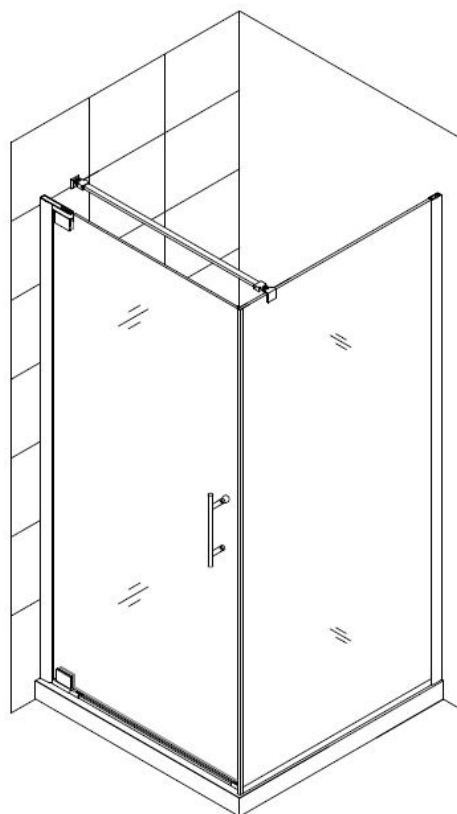
NOTE: Some adjustments and drilling may be necessary during the installation process.

NOTE: We strongly recommend installing the wall extrusions to studs / noggins. Preferably install 90x45mm wood behind the linings in suitable places before you line the walls.

4. We recommend the Cube shower door is fitted to a Dreamline Cube acrylic shower tray.

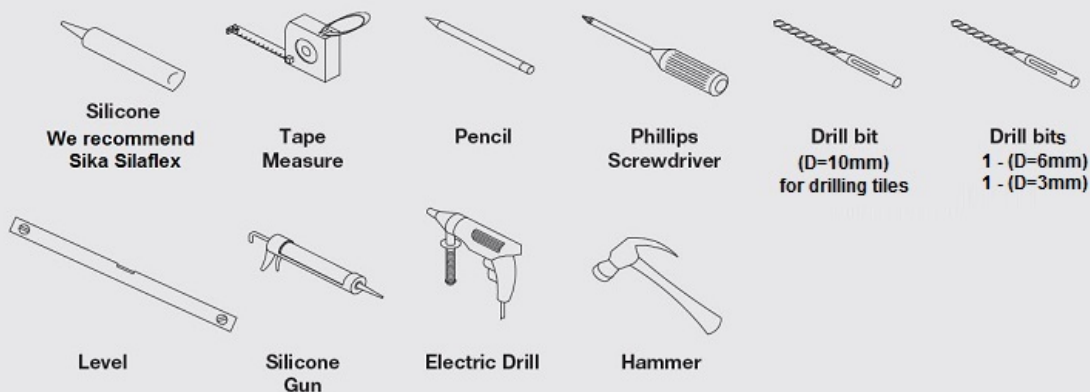
It is suitable for installation using either acrylic liners or tiled walls.

5. This unit **must** be installed against completely finished floor and walls.



We recommend placing a drop cloth or protective clean cardboard into the base of the tiled shower or acrylic shower tray to prevent damage caused by footwear or dropped tools.

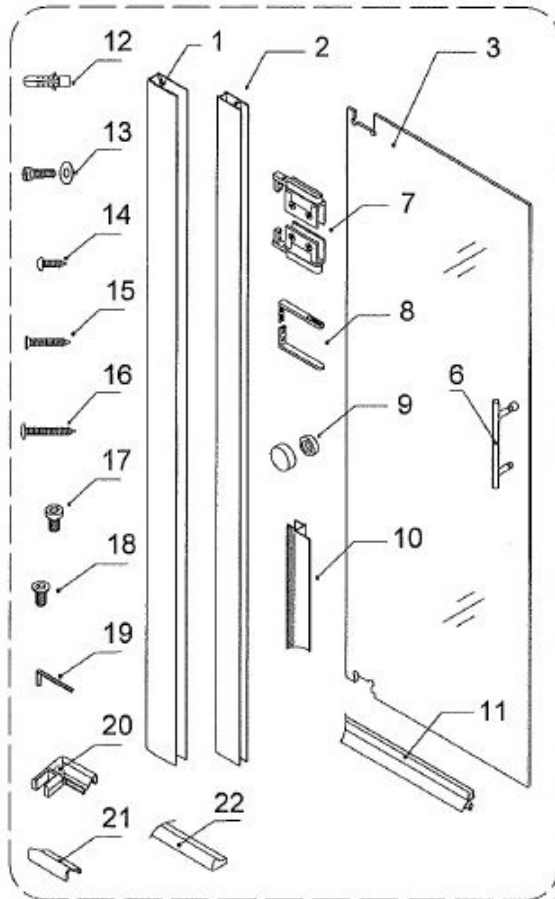
Tools Required



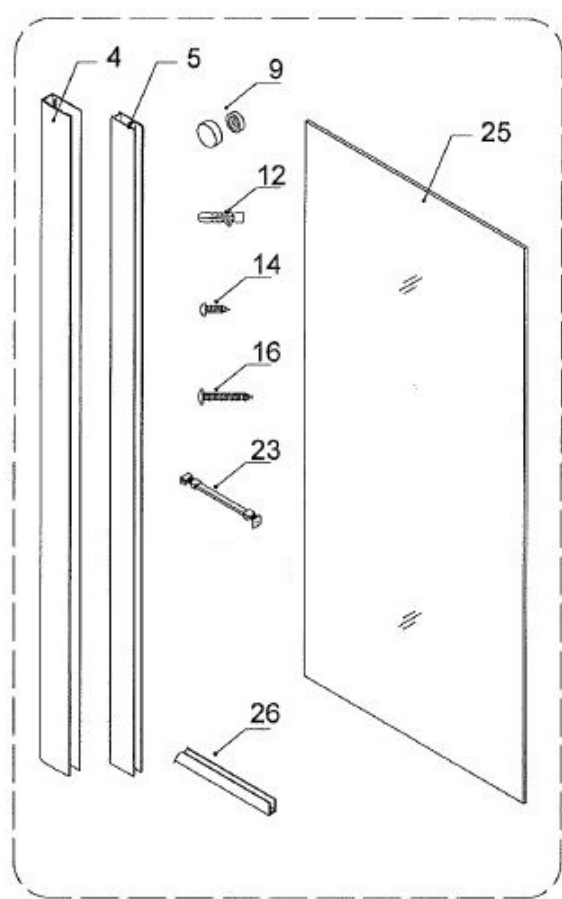
**The order of installation described in the following pages is important.
Please follow these instructions carefully**

Shower Enclosure Components

Door Components



Return Panel Components



Return Panel Components

4	Return Wall Extrusion (Aluminium)	1pc	14	Round head screw ST4.2×10	4pcs
5, 25 & 26	Return Panel with Aluminium trims	1pc	16	Round head screw ST4.2×40	5pcs
9	Decorative Covers (over screws)	4pc	23	Support Bar	1pc
12	Wall Anchors (if required)	5pcs		Magnetic door seals 2 (not shown)	2pc

Door Components

1	Door Wall Extrusion (Aluminium)	1pc	13	Screw M4×16 with washer	4pcs
2	Door Pivot Extrusion (Aluminium)	1pc	14	Round head screw ST4.2×10	4pcs
3	Glass Door	1pc	15	Countersunk screw ST4.2×25	2pcs
6	Handle	1pc	16	Round head screw ST4.2×40	8pcs
7	Pivot assembly (upper and lower)	1pair	17	Hex socket round head bolt M6×12	1pc
8	Pivot assembly brackets	1pair	18	Hex socket flat head bolt M6×12	1pc
9	Decorative Covers (over screws)	4pcs	19	Allen key 4mm, 5mm each	1set
10	Vertical Water Seal (wall side of door)	1pc	20	Water seal connector 1 (left, right)	2pcs
11	Water Seal strip (bottom door)	1pc	21	Water seal connector 2 (left, right)	2pcs
12	Wall Anchor (if required)	8pcs	22	Water seal Aluminium strip	1pc

NOTE: Unpack your unit carefully and inspect it. Lay it out and identify all parts using the detailed diagram and packing list in this manual as a reference. Before discarding the carton, check for small hardware bags that might fall to the bottom of the box. If any parts are damaged or missing, please contact your supplier for replacement.

Items 20 21 & 22 will only be used in some installs,

You only need 1 of each of #'s 20 & 21 (left or right install) when used .

Cube Shower Door Installation

Verify size of products to be installed. Refer to following pictures to confirm installation positions. Door and Return can be fitted in either **A** or **B** positions.

These are your minimum width install positions to the inside of the U-channels

900mm shower tray

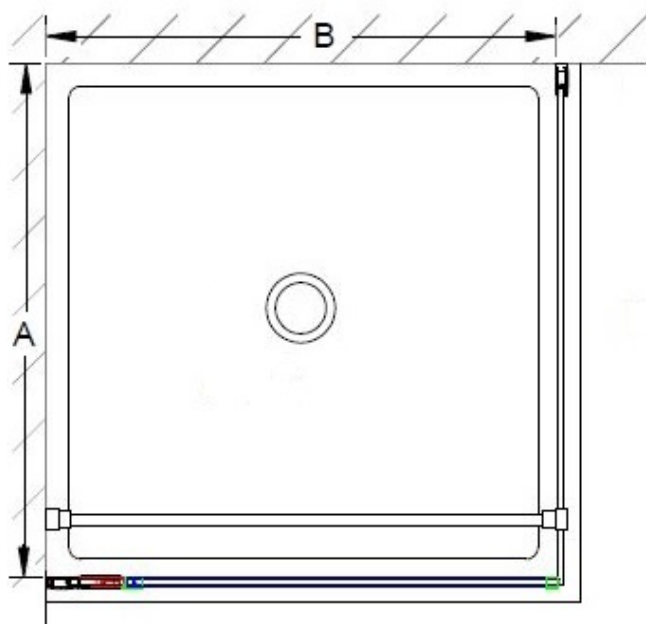
A = No less than 863mm

B = No less than 863mm

1000mm shower tray

A = No less than 963mm

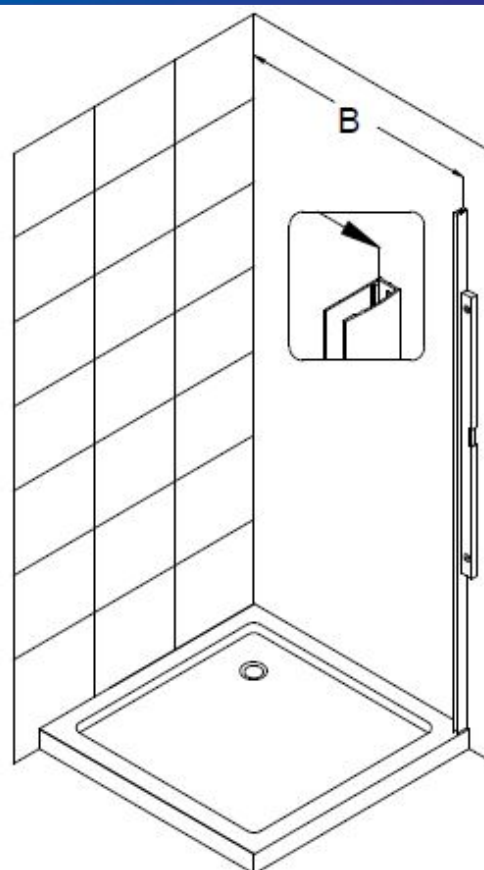
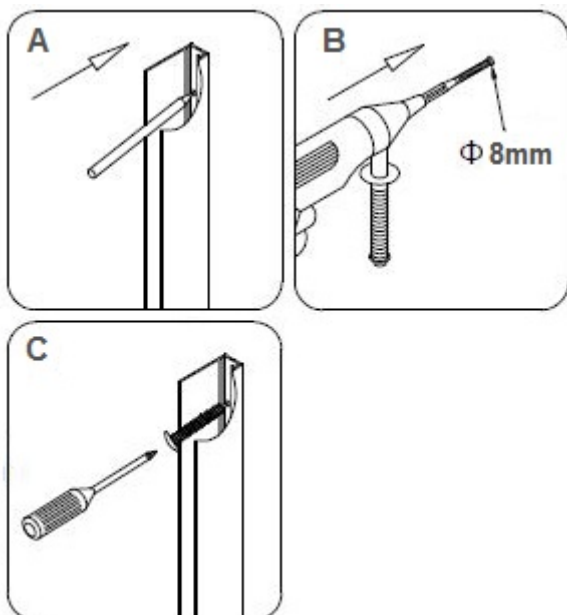
B = No less than 963mm



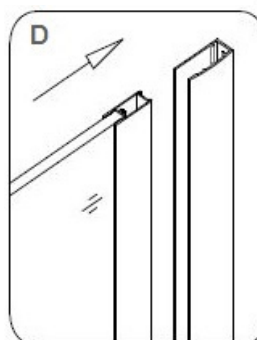
Install Return Panel First

1. Hold **Wall Extrusion (4)** in place, check it is vertical before you mark or drill holes through wall lining or tiles.

Apply silicone sealant to the back of the **Wall Profile (4)** and fix in place using **round head screws ST4.2x40 (16)**



2. Place **Return Panel (5)** into **Wall Extrusion (4)**
Do not fix in place
 Place **Vertical Magnetic Water Seal** on front of **Return Panel (5)**

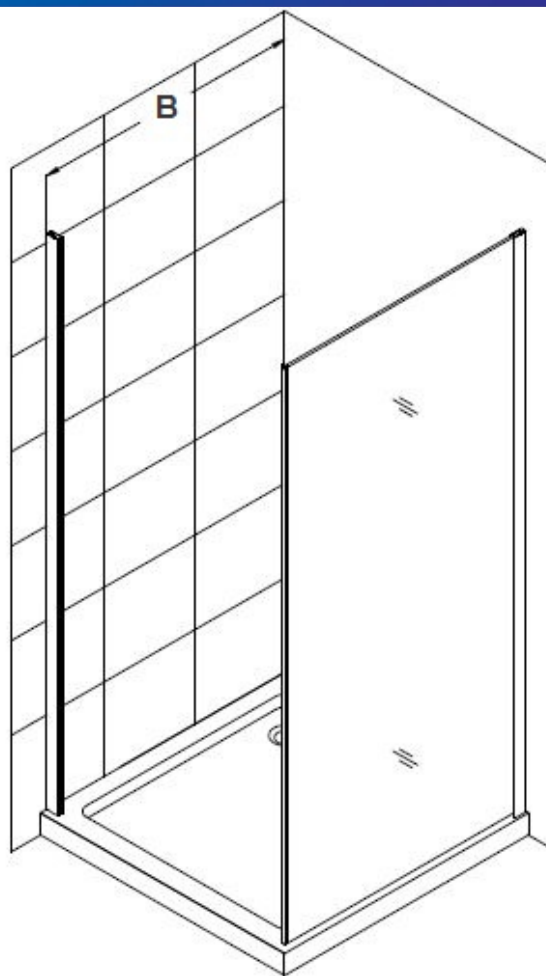
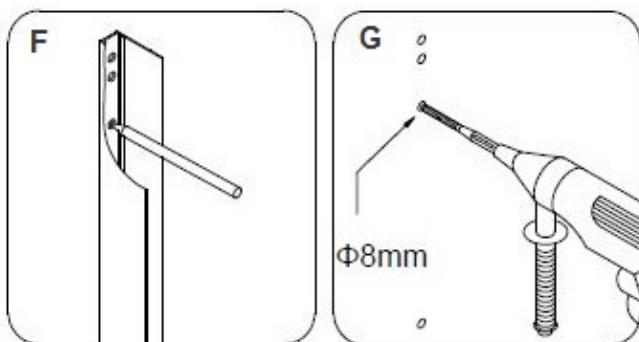


Install Cube Shower Door

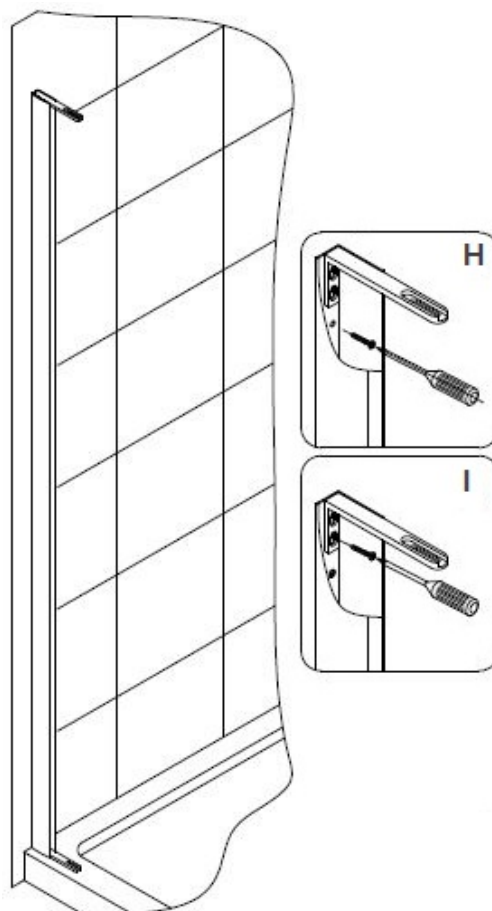
3. Place **Door Wall Extrusion (1)** 863mm minimum from the internal cnr of the shower (**B**), (same as return) check it is vertical before you mark and drill holes.

The top and bottom 2 holes are for the **Pivot assembly brackets (8)**

4. Use pre-drilled holes in the **Door Wall Extrusion (1)** to mark holes for drilling, and drill all holes, through your wall lining or tiles



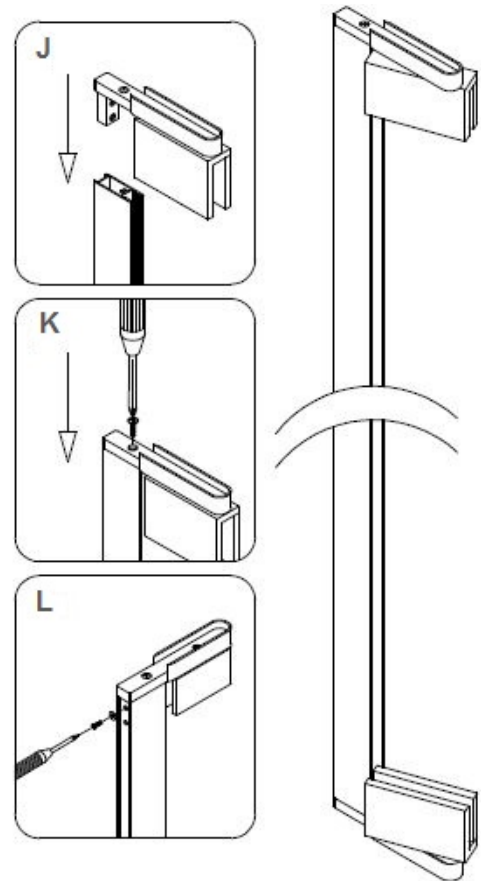
5. Locate **Pivot assembly brackets (8)** and place in either end of **Door Wall Extrusion (1)**, then apply silicone sealant to the back, line up with pre-drilled holes and fix to wall using **round head screws ST4.2×40 (16)**.



Install Shower Door Hinge

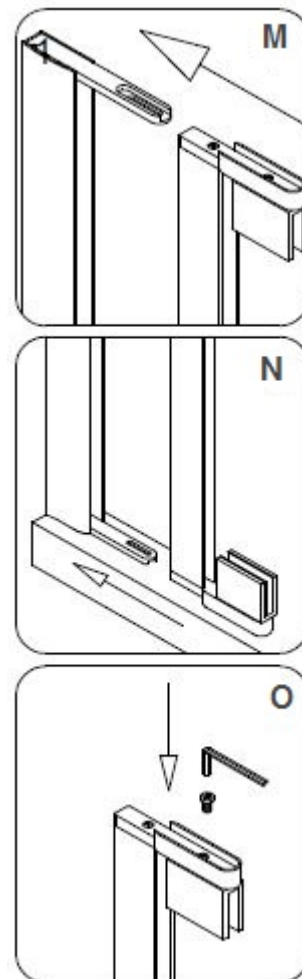
6. Locate the **Door Pivot Extrusion (2)**. Push the upper **Pivot assembly (7)** into the top groove of the **Door Pivot Extrusion (2)**; then secure it to the profile with **Flat head screws ST4.2×25 (15)** and **M4×16 bolt (13)**. Repeat the same steps for the bottom **Pivot assembly (7)**.

See J, K & L for details



7. Push the assembled **Door Pivot Extrusion (2)** into the groove of the **Door Wall Extrusion (1)**. Secure the upper **Pivot assembly (7)** and the upper **Pivot retainer (8)** using **Hex Socket flat head bolt M6×12 (18)**.

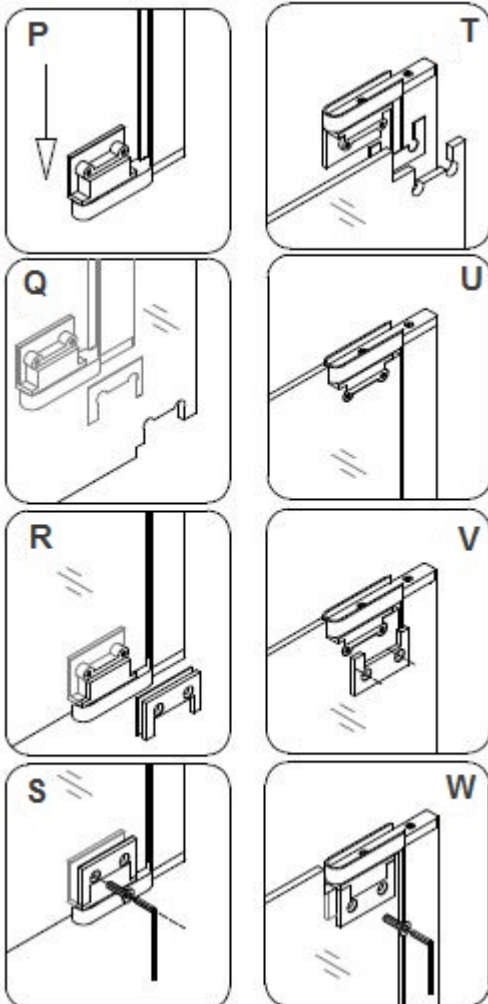
See M, N & O for details



Install Shower Door Glass

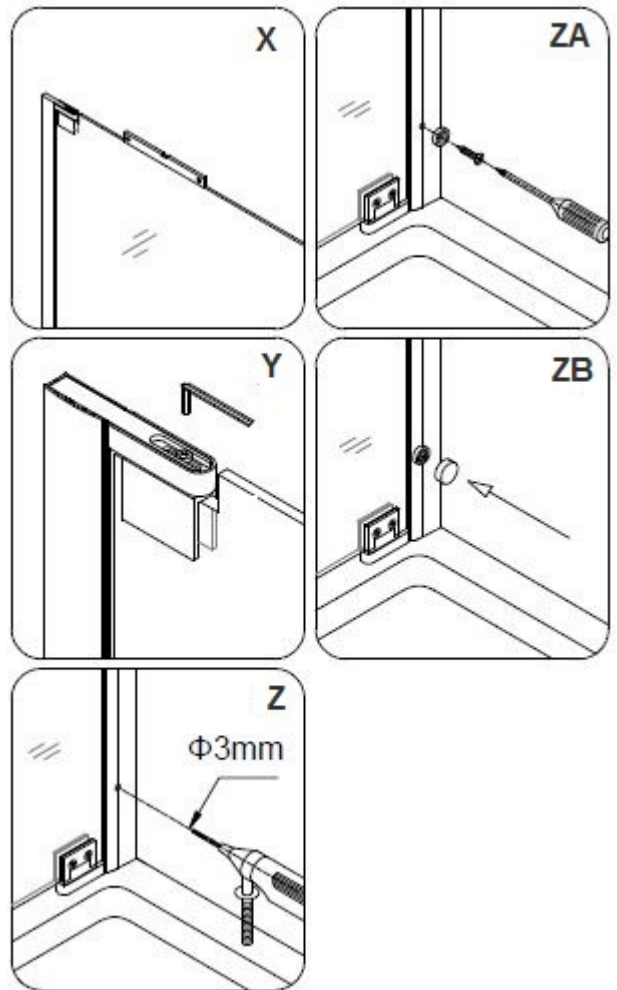
8. Install Glass Door (03).

See P – W for details.



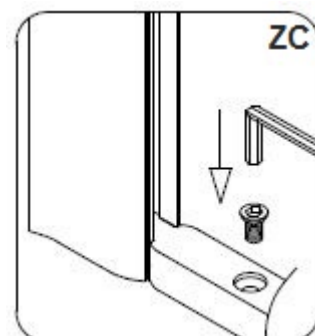
9. Confirm **return panel (5)** is in the correct position and parallel to your shower tray.
10. Level and plumb the glass door, bringing it to about 2mm clearance to the return panel and tighten **Hex socket flat head bolt M6×12 (18)**.
11. Confirm door is level then drill the holes at the bottom (first) then top in the **Wall extrusion (1)** and secure it to the **Glass extrusion (2)**, with **Round head screw ST4.2×10 (14)** and cover the exposed screw heads with **Decorative plugs (09)**.

See X-ZB for details



12. Fit **Glass extrusion (2)** to **Wall profile (01)** with 2 more **Round head screw ST4.2×10 (14)**.
13. Place the **Hex socket flat head bolt M6×12 (18)** to the bottom **Pivot bracket (17)** or you can drill through the screw hole, apply silicone and secure it using **Countersunk screw M4.2 ×25 (24)**.

See ZC for detail.

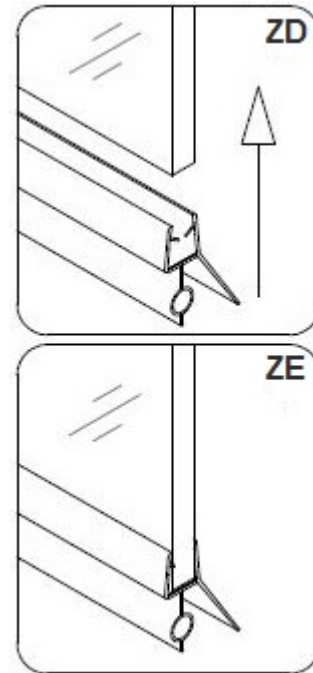


Install Shower Door Seals

14. Insert **Vertical Water Seal (10)** into **Glass extrusion (2)** with lip to outside of door.
And **Water Seal strip (11)** to bottom of door, angled lip to inside.

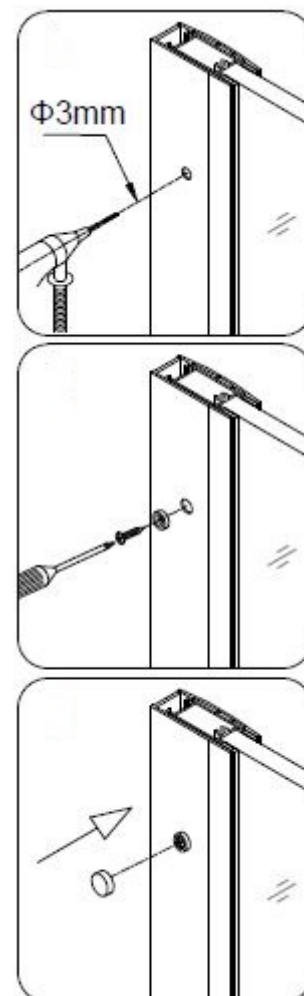
See ZD-ZE for detail.

The angled flat should be to the outside



Fixing Return Panel

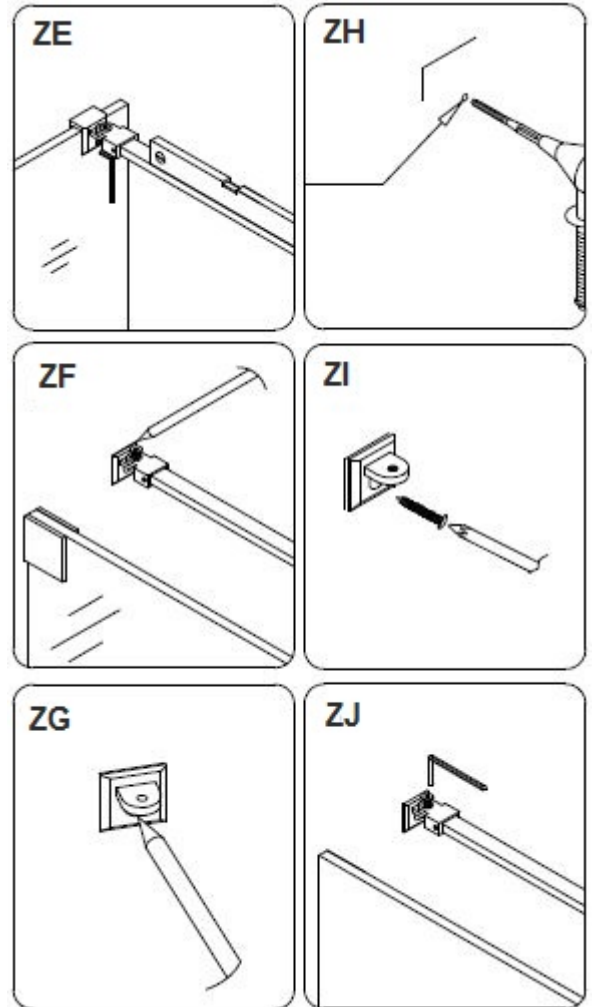
15. Again confirm the **return Panel (5)** is in the correct position and far enough out from the wall to keep the door square.
16. Drill the holes at the top and bottom in the **Wall extrusion (1)** and secure it to the **Return Panel (5)**, with **Round head screw ST4.2×10 (14)** and cover the exposed screw heads with **Decorative plugs (09)**.



Install Return Support Bar

17. Place **Support Bar (23)** onto **return Panel (5)** within 150mm from the front, confirm it is level, and also square to the wall. Mark as shown in ZF, remove bar and bracket, mark and drill clearance hole use **wall anchor (12)** if need be, and attach bracket to wall with **Screw ST4.2×40 (16)**.

18. Lower **Support Bar (23)** onto glass return (placing plastic gasket between the glass and metal) and tighten set screw. If need be adjust rail length where rail goes into brackets.

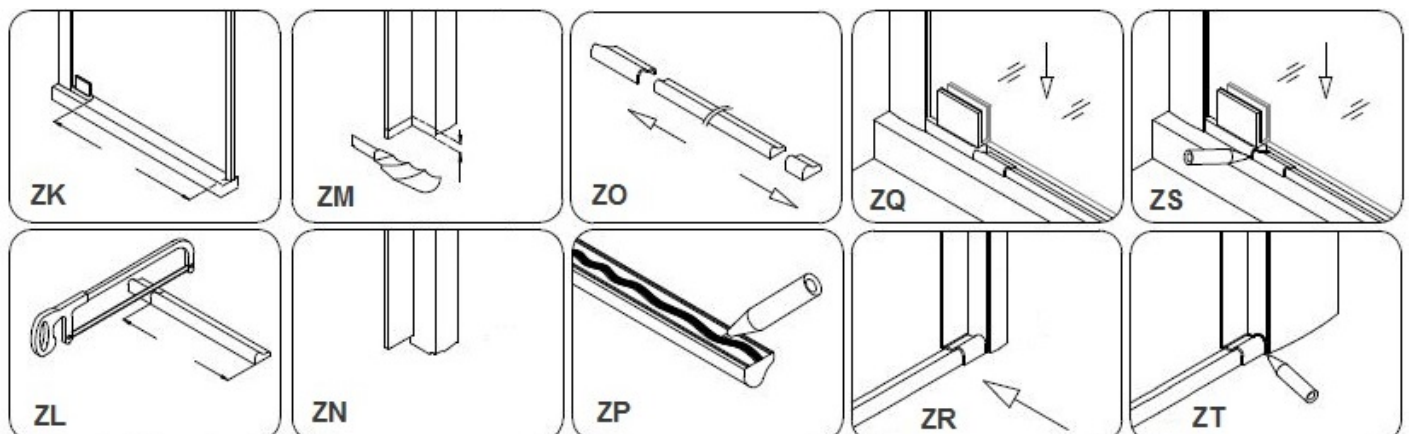


Install Door Aluminium Water Seal Set

Note: We recommend his seal set is only installed when this door is installed on a Tiled floor or shower tray other than a **Cube** Henry Brooks shower tray.

19. Locate **Water Seal Aluminium Strip #'s (20), (21) and (22)**. If Water Seal Aluminium (22) is too long, it will need to be cut. See ZK and ZL.

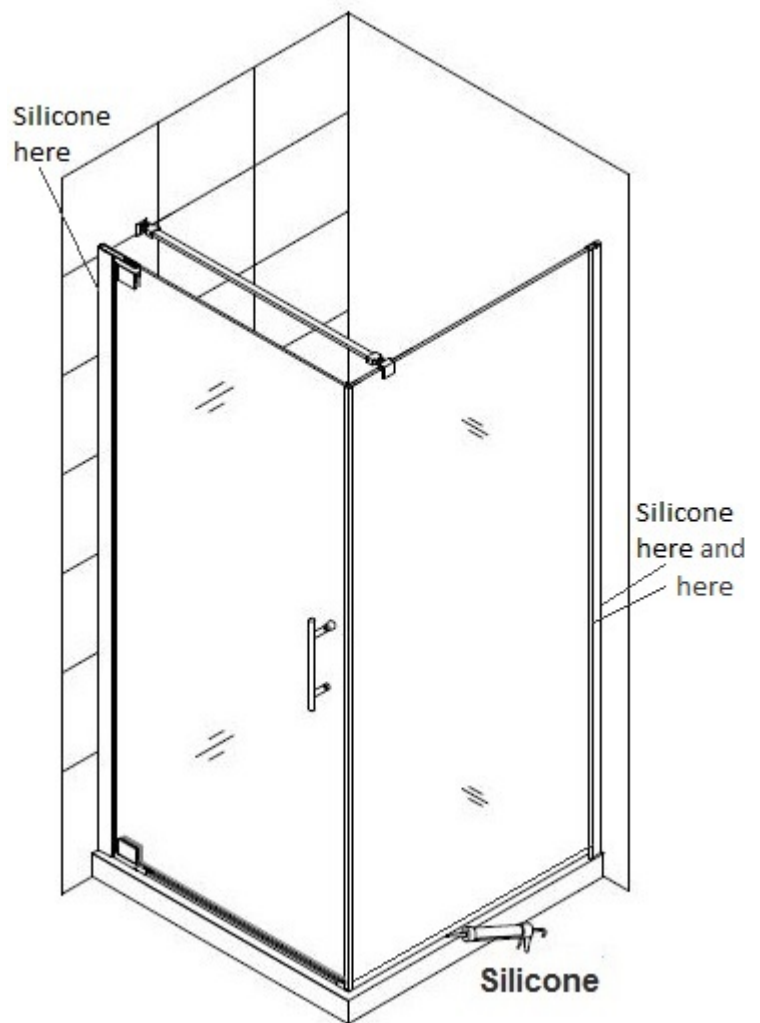
20. Slide (20) and (21) on to the correct ends of (22). Place silicone sealant onto bottom of **Water Seal Aluminium assembly** and lower into place pulling both (20) and (21) as wide as possible.



Sealing the Shower

21. Seal the outside edges only, between the shower tray and the stationary glass and between the wall and the aluminium extrusions using a high quality silicone

See image to right.



The acrylic back walls should be wiped off with a soft cloth or squeegee after each time the shower is used.

Rinse and use only a soft cloth or squeegee on the glass surfaces.

Clean to a sparkling finish with any glass cleaner

Never use petroleum. Ammonia, bleach, acid or lemon based cleaners on any part of the shower.

Never use abrasive cleansers, metal brushes or scrapers, that could scratch or dull the surface of the acrylic liner, glass or any stainless parts.

BATHROOMDIRECT
RENOVATIONS + INSTALLATIONS + OUTLET STORE
DIRECT FROM THE MANUFACTURER

PH: 09 913 3110 FAX: 09 913 3113
5 Smales Road East Tamaki, Manukau
P.O. Box 58031 Botany 2163

AUCKLAND // WELLINGTON // CHRISTCHURCH

We trust you will enjoy your new Dreamline Cube shower from
www.bathroomdirect.co.nz