



Eclipse Tray & Door Install Instructions

Installation Guide



Acrylic Wall Installation



Tiled Wall Installation

Thank you for your order

PLEASE READ these entire instructions BEFORE you START

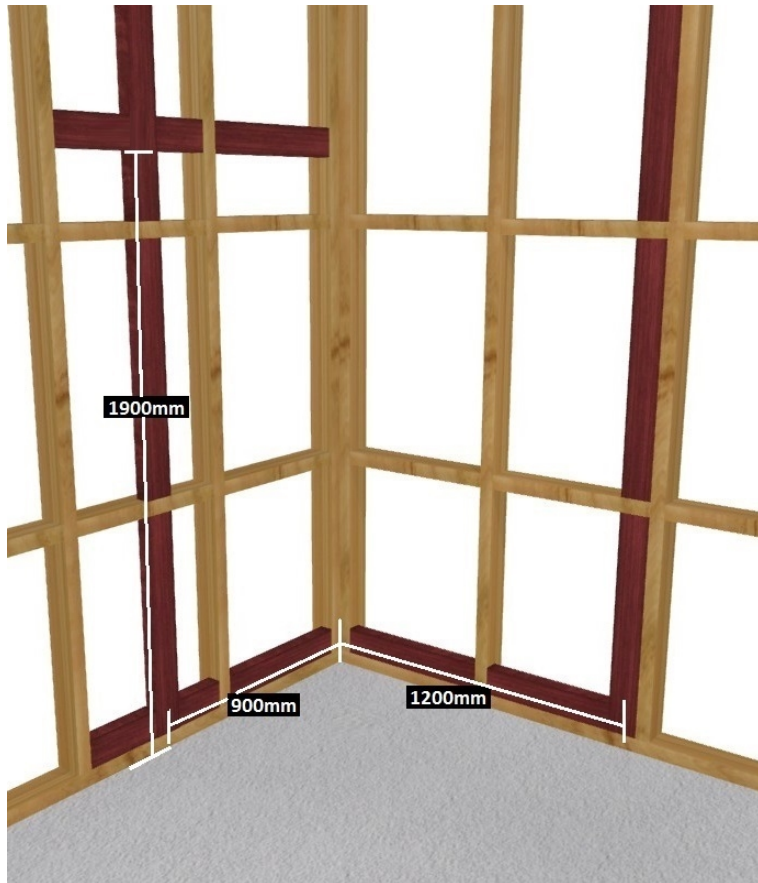


PH: 09 913 3110 FAX: 09 913 3113
5 Smales Road East Tamaki, Manukau
P.O. Box 58031 Botany 2163

AUCKLAND // WELLINGTON // CHRISTCHURCH

www.henrybrooks.co.nz

Eclipse Shower Tray Install Guide



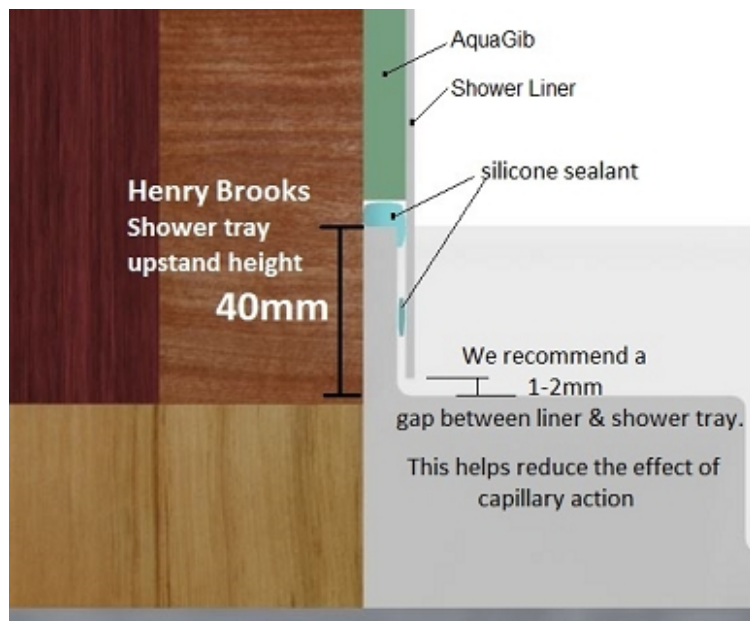
You will find this video useful <https://youtu.be/K38V9-wUvHg> as it covers most of what is needed to install a Henry Brooks Shower tray and liner including preparation before any wall linings are completed.

Please note – Additional to video

As the Eclipse Shower has an upper rail that holds the return glass in place we also recommend you add timber behind the Aqua Gib at the top of the shower so you can screw the rail into something solid rather than using a hollow wall anchor.

The pale coloured wood is your existing framework the darker wood is the additional timber we suggest you install.

Showing additional Timber before room lining



Showing installed shower complete with doors

Eclipse Shower Door Install Guide

Preparation

It is recommended that 2 people install this shower door as the glass panels are heavy.

1. After opening the boxes, read this introduction carefully, check all the packed parts are complete by cross checking all the components against the "Shower Enclosure Components" page. Examine for shipping damage. If the unit has been damaged, has a finishing defect or has missing parts please contact your local distributor.

Do Not install Damaged Parts as the warranty will be voided.

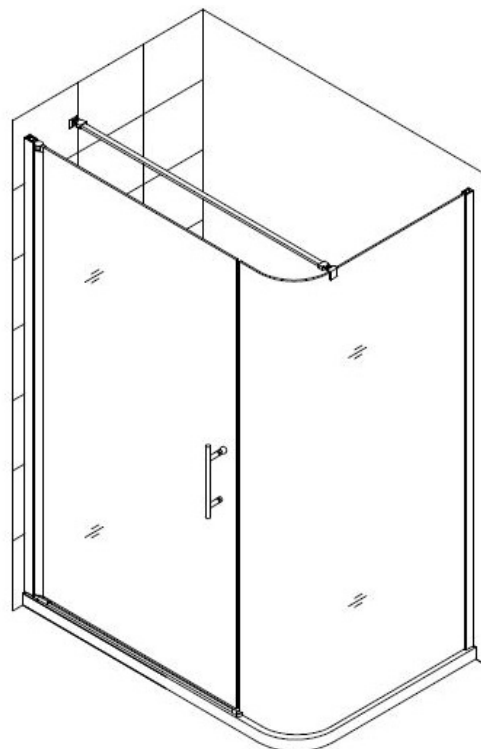
2. You must have all the correct plumbing and drainage components installed before you start to install the shower doors.
3. Please ensure prior to installation, that the installation surface is true and level, and robust enough to support the total weight of the shower unit. Also make sure the walls are true and plumb.

NOTE: Some adjustments and drilling may be necessary during the installation process.

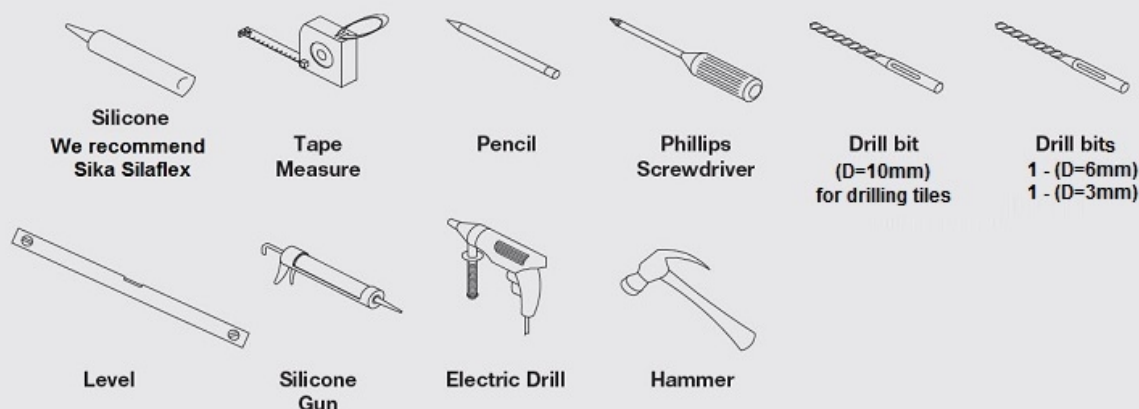
NOTE: We strongly recommend installing the wall extrusions to studs / noggins. Preferably install 90x45mm wood behind the linings in suitable places before you line the walls.

We recommend placing a drop cloth or protective cardboard into the base of the tiled shower or acrylic shower tray to prevent damage caused by footwear or dropped tools.

4. This door can be fitted to
 - A. Dreamline acrylic shower tray
 - B. Tiled shower threshold / plinth which requires a minimum width of 60mm of installation space.
 - C. Flat floor
5. This unit must be installed against completely finished floor and walls.

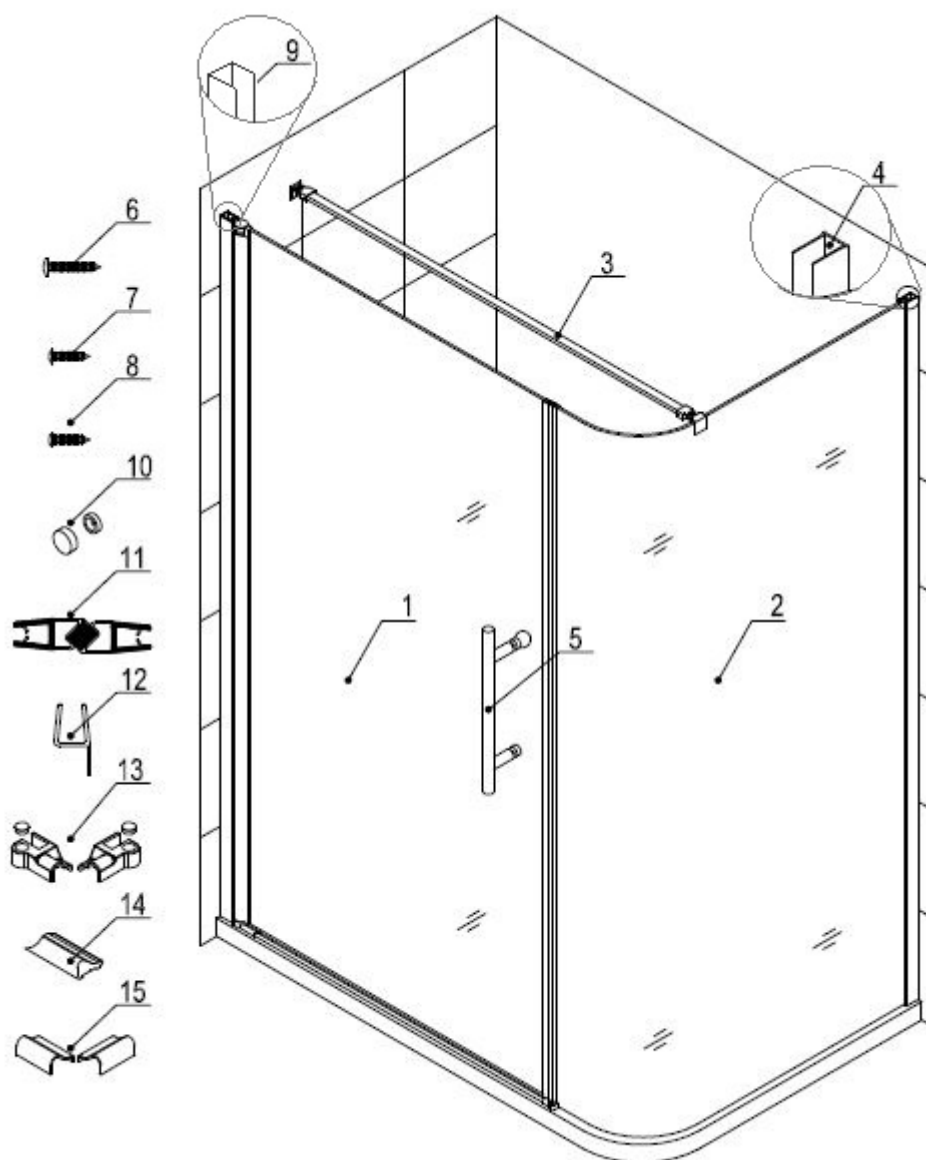


Tools Required



**The order of installation described in the following pages is important.
Please follow these instructions carefully**

Eclipse Shower Components



Packing List

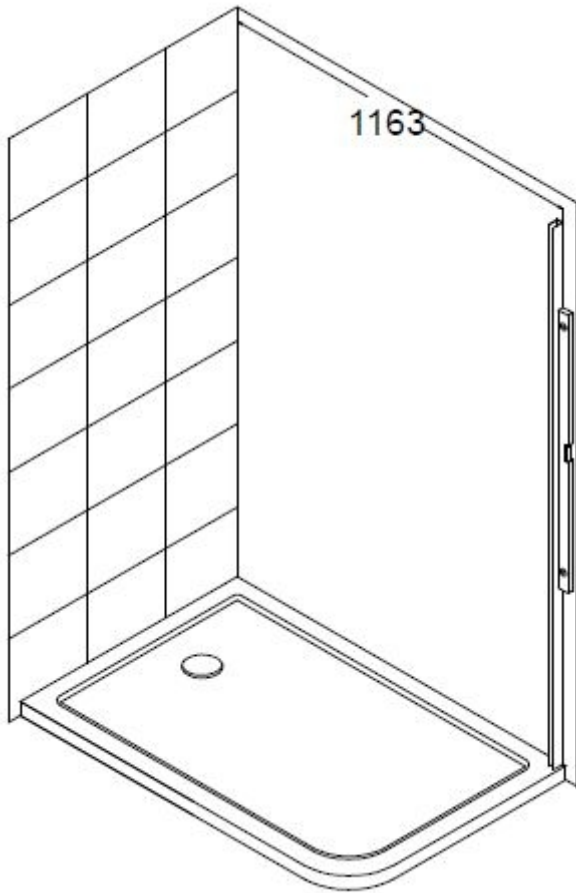
1	Glass door	1pcs	9	Wall extrusion (for hinge)	1pc
2	Stationary Glass Panel	1pc	10	Screw cover	6pc
3	Support bar	1pc	11	Magnetic Strips	1pair
4	Wall extrusion (for Return Glass)	1pc	12	Water seal strip	1pc
5	Handle	1pc	13	Water seal connector 1 (left, right)	1pair
6	Flat head screw ST4.2 x 45	9pc	14*	Water seal Aluminium strip	2pcs
7	Round head screw ST4.2 x 10	6pc	15*	Water seal connector 2 (left, right)	1pc
8	Round head screw ST4.2 x 25	1pc			

NOTE: Unpack your unit carefully and inspect it. Lay it out and identify all parts using the detailed diagram and packing list in your manual as a reference. Before discarding the carton, check for small hardware bags that tend to fall to the bottom of the box. If any parts are damaged or missing, please contact Henry Brooks for replacement.

You will only need 1 of each of #'s 13 & 15 (left or right install)

*** 14 & 15 only to be used on Tiled trays**

Eclipse Shower Door Installation



NOTES:

Ensure all extrusions are plumb and parallel to the edges of the shower tray or tile nib and any liner or tile line.

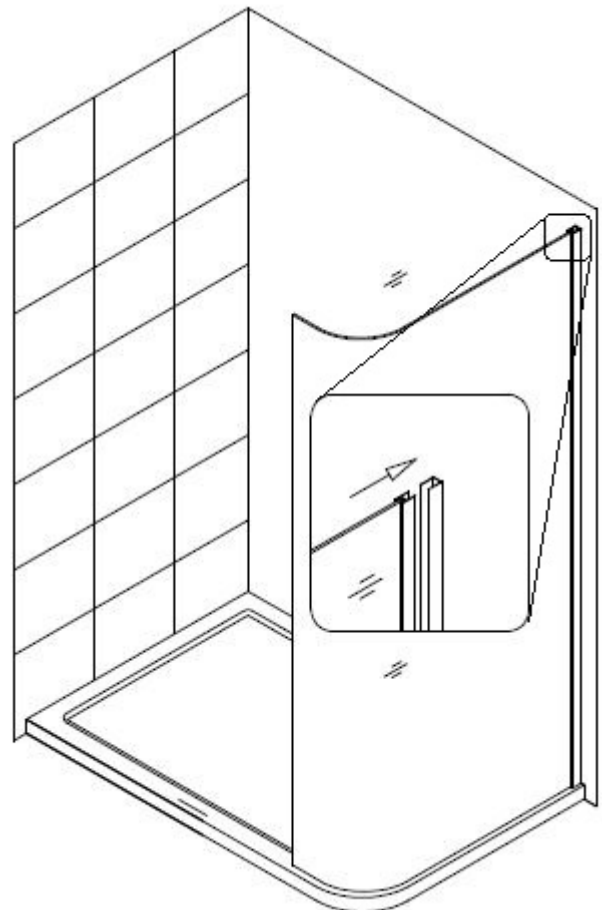
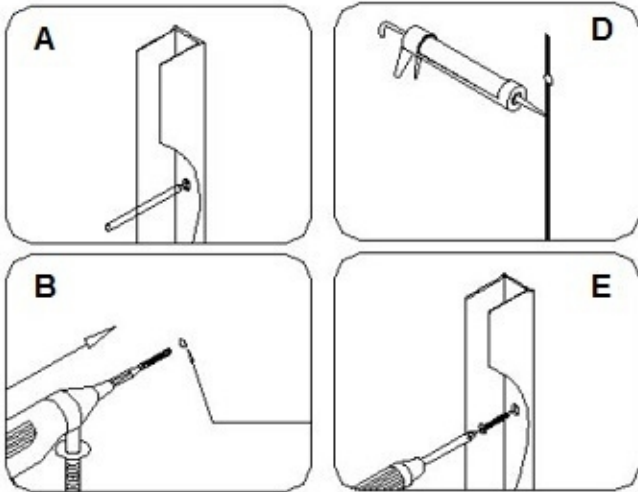
Silicone should be applied to the back of each of these extrusions then screwed to shower liner / tiles and tray / tiles.

Recommended installation order

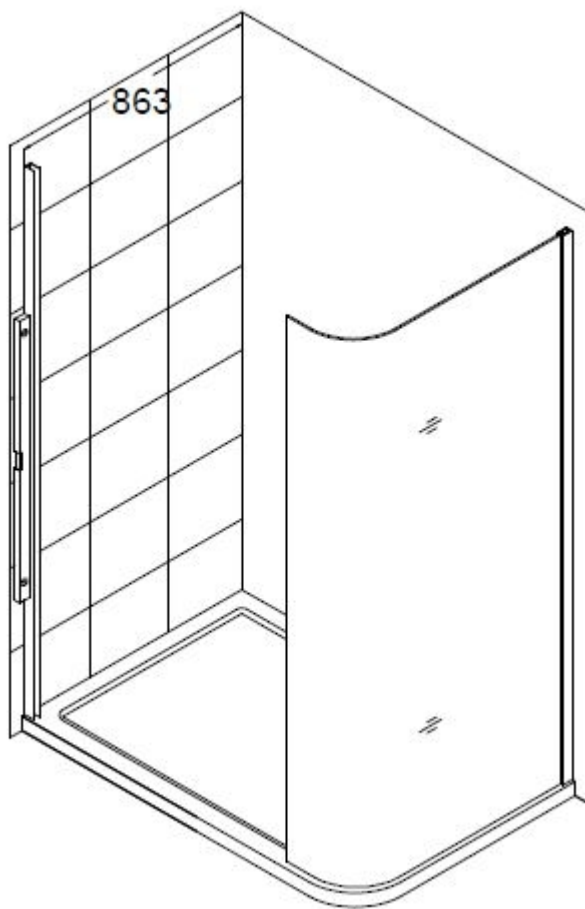
1. Place **wall profile (04)** on the wall no less than 1163mm from corner, confirm it is vertical and within the edges of your shower tray. Mark the screw positions, drill clearance holes in only the extrusion and liner or tiles. Then apply silicon to the extrusion, secure to the wall with the **ST4.2*40 big flat head screw(06)**.

See steps A – E for details.

2. Move the assembled side stationary glass in to position and slide it into wall profile.
See below for detail.

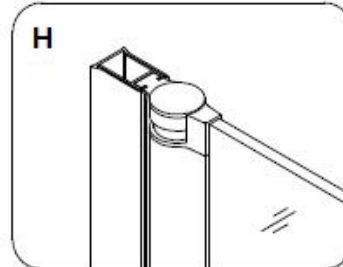
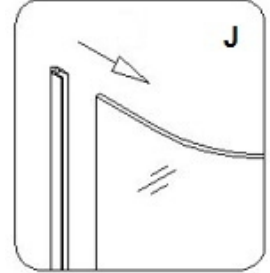
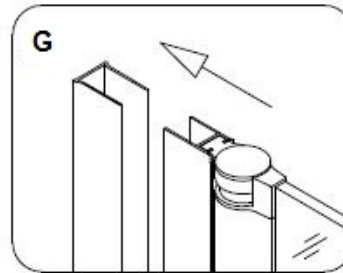
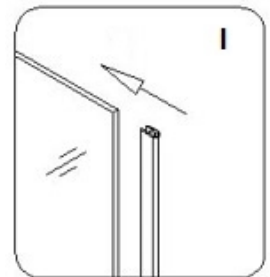
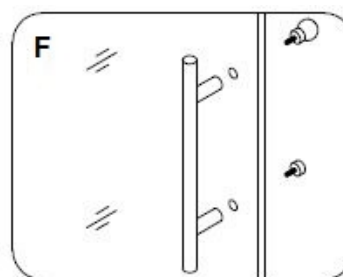
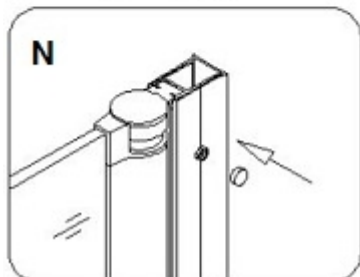
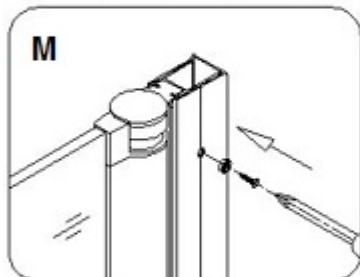
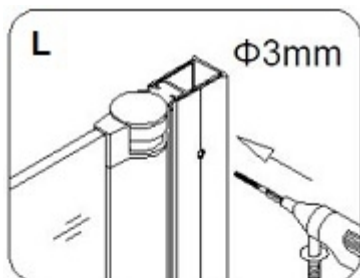


Eclipse Shower Door Installation



3. Install the 2nd **wall profile(09)** no less than 863mm from corner (as diagram on left) again checking that it is vertical and within the edges of your shower tray. Mark the screw positions, drill clearance holes in only the extrusion and liner or tiles. Then apply silicon to the extrusion, secure to the wall with the **ST4.2*40 big flat head screw(06)**. (See steps A-E previous page)

4. Install the **handle(05)** on the glass door. Lift the glass door then slide it into the wall profile: See F, G & H for details.

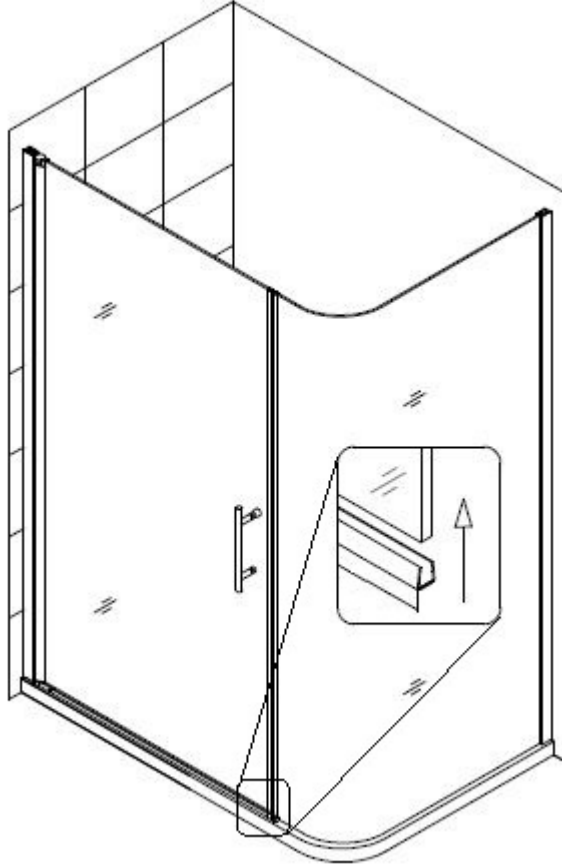


5. Slide the **magnetic strips(11)** onto the glass door and stationary glass. Then close the door, and adjust to make the magnetic strips connect evenly. See I, J & K for details.

6. Mark the glass door screw position. Drill holes, top middle and bottom then secure with **T4.2*10 round head screw(07)**. Cover it with **decorative cover(10)**. See L, M & N for details.

Eclipse Lower Door Seals

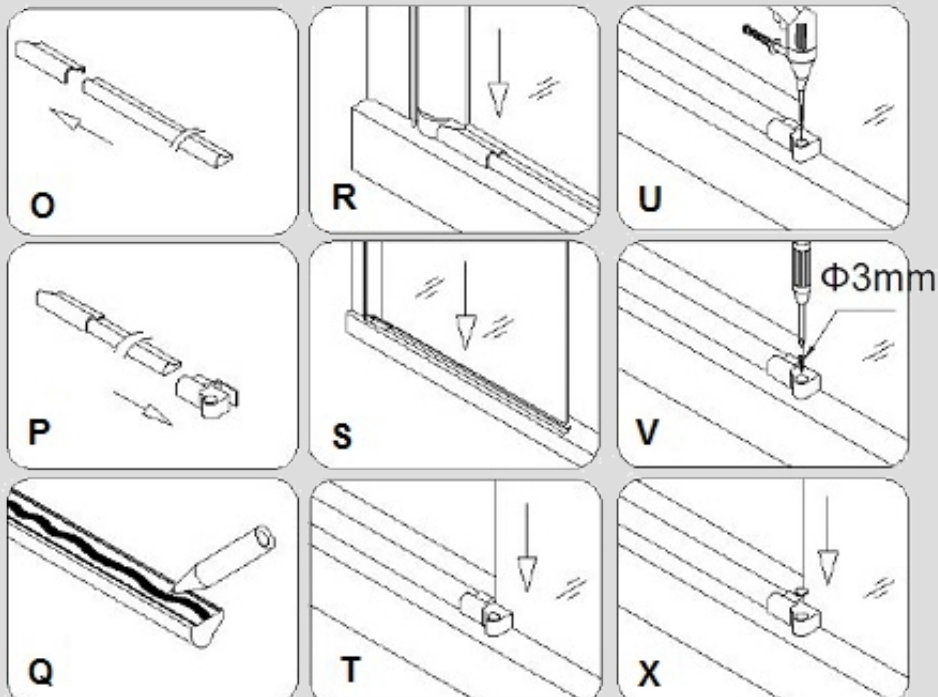
Installing Drip Strip on bottom of door



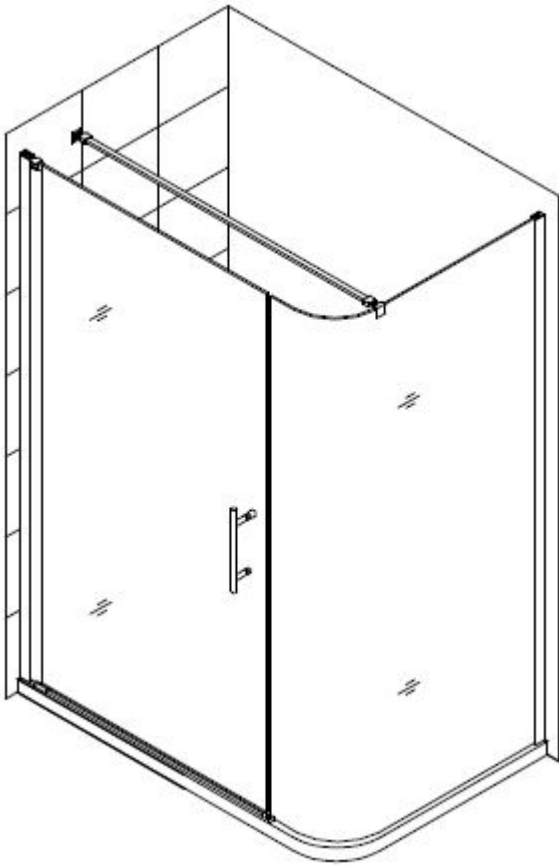
8. Slide the bottom Drip Strip onto the bottom glass door.

ONLY to be used if installing on a Tiled Shower tray

3. Insert the **water seal connector(13)or(15)** into the **water seal aluminium strip (14)**. Press them firmly together (**P**). Apply silicon on the back of **water seal aluminium strip(14)**. Drill the hole through **(13)** into tray or step. Secure with **ST4.2*25 round head screw(08)**. Place the decorative cover over the screw.



Eclipse Glass Support Bar



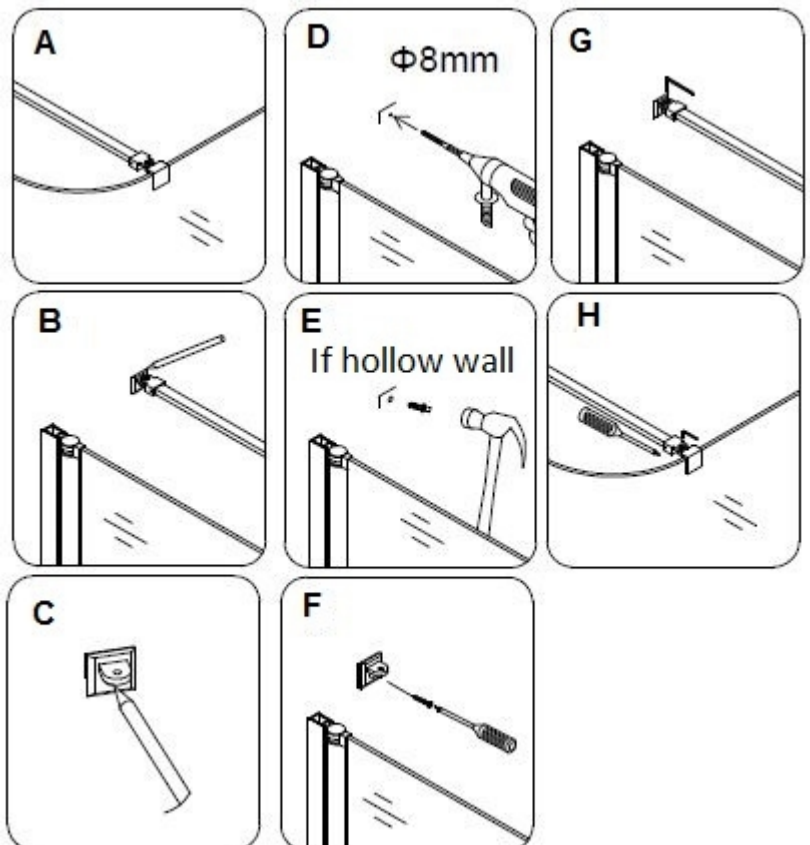
9. Install **support bar(03)**. Place **support bar03** on the glass at the back of the curve, see diagram on left. Mark the screw position, drill a pilot hole first then clearance hole through tiles or liner. Secure with **ST4.2*40 screw**, and tighten.

Note:

As you would have installed framing timber at a suitable height before your lining was installed all you need to do is screw through your shower lining for the wall bracket.

If you have a tiled wall our recommendation is that you drill and screw through a grout line if you can. Don't forget to seal the hole with silicone

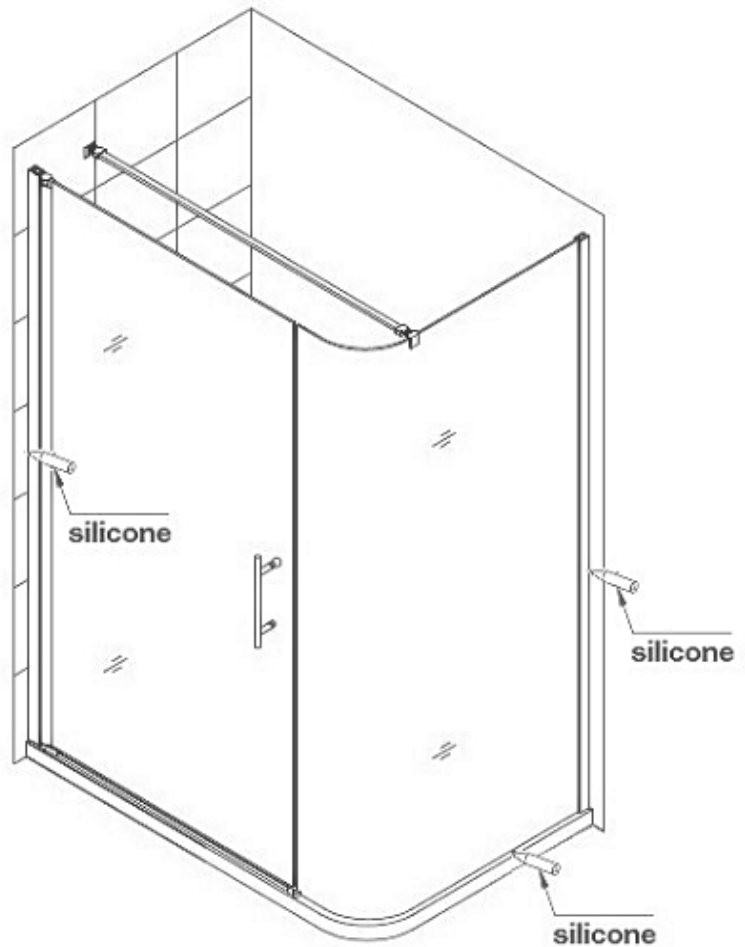
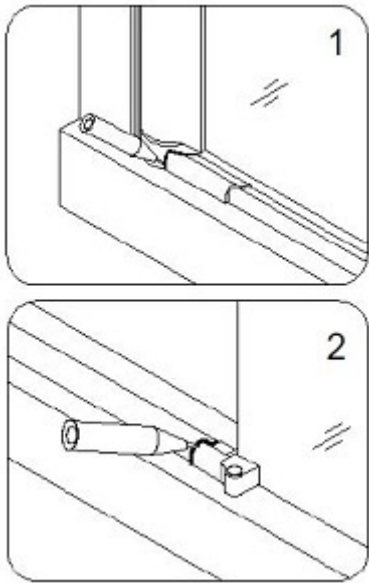
See images below for details.



Sealing the Shower

- Mask & apply silicone along all **outside edges** and any vertical joint between aluminium extrusions as shown in the diagram.

Clean only excess silicone off with tissue paper.



Do Not apply silicone to any inside edges as this forms a barrier, actually stopping water from running back into the shower tray and can also promote mould growth inside the shower enclosure

Product Maintenance

The acrylic back walls should be wiped off with a soft cloth or squeegee after each time the shower is used.

Rinse and use only a soft cloth or squeegee on the glass surfaces.

Clean to a sparkling finish with any glass cleaner

Never use petroleum. Ammonia, bleach, acid or lemon based cleaners on any part of the shower.

Never use metal brushes or scrapers, that could scratch or dull the surface of the acrylic liner, glass or any stainless parts.

For stubborn stains we recommend Liquid Jif before polishing to a sparkling finish with glass cleaner.



PH: 09 913 3110 FAX: 09 913 3113
5 Smales Road East Tamaki, Manukau
P.O. Box 58031 Botany 2163

AUCKLAND // WELLINGTON // CHRISTCHURCH

We trust you will enjoy your new Dreamline shower from
www.henrybrooks.co.nz