



# Dreamline Shower Door

## Installation Guide



Thankyou for your order

Ph. 09 913 3110 Fax. 09 913 3113  
5 Smales Rd, East Tamaki, Manukau  
P.O.Box 58031 Greenmount, Manukau 2141

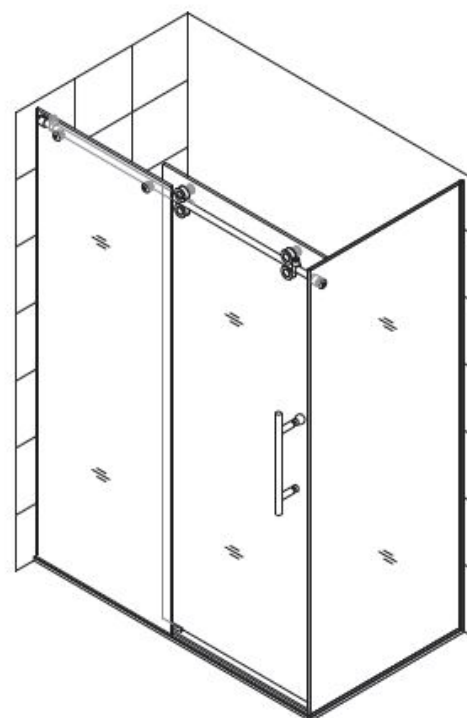
AUCKLAND // WELLINGTON // CHRISTCHURCH

[www.henrybrooks.co.nz](http://www.henrybrooks.co.nz)

# Dreamline Shower Enclosure

## Preparation

1. After opening all boxes and packages, read this introduction carefully. Check that all of the needed parts are included in the package, by marking all the components on the detailed diagram of the shower enclosure. Examine for any shipping damage. If the unit has been damaged, or has a manufacturing fault, or has missing parts, please contact our customer service department within five days of the delivery date.
2. You must have all the correct plumbing and drainage components installed before you start to install the shower doors.
3. Please ensure prior to installation, that the installation surface is true and level, and robust enough to support the total weight of the shower unit. Also make sure the walls are true and plumb.
4. This door can be fitted to
  - A. Dreamline acrylic shower tray
  - B. Tiled shower threshold / plinth which requires a minimum width of 90mm of installation space.
  - C. Flat floor
5. This unit must be installed against completely finished floor and walls.



**NOTE: Some adjustments and drilling might be necessary during the installation process.**

**NOTE: Page 5 calls for the installation of the guide rail bracket to the wall using anchors. However we strongly recommend installing the door guide rail bracket to the studs or preferably pre-install 90x45mm wood reinforcement behind the linings to take the brackets.**

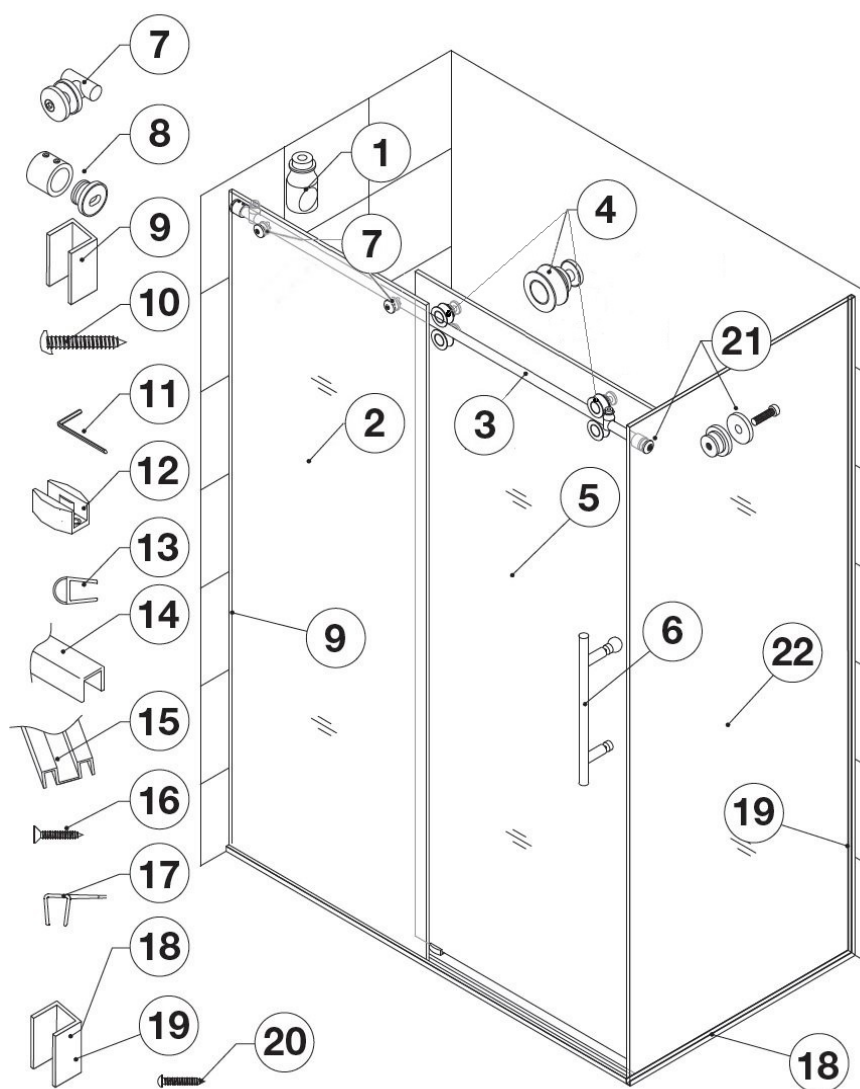
We recommend placing a drop cloth or protective cardboard into the base of the tiled shower or acrylic shower tray to prevent damage caused by footwear or dropped tools.

**The order of installation described in the following pages is important.  
Please follow these instructions carefully**

## Tools Required



# Shower Enclosure Components



**Packing List A**

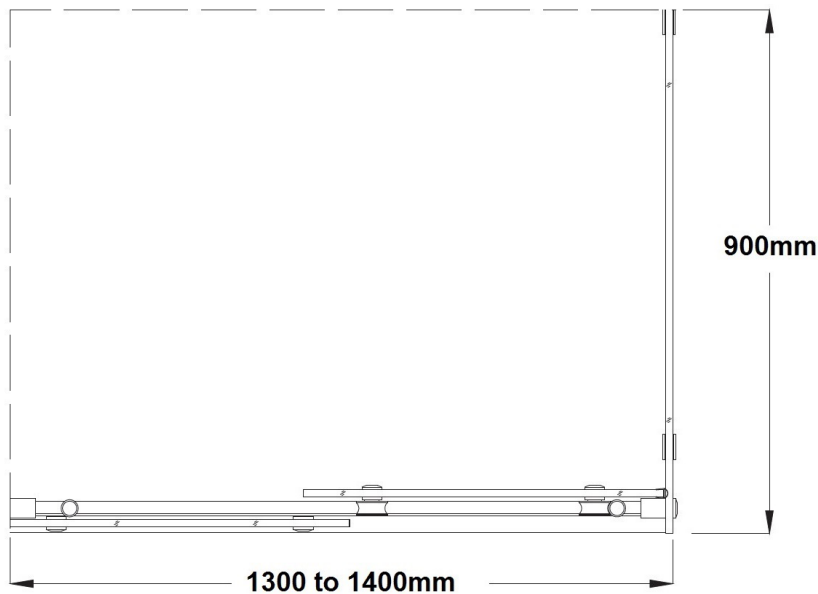
1	Door Stopper	2pcs	12	Guide block	1pc
2	Stationary Glass Panel	1pc	13	Bumper strip	1pc
3	Guide rail	1pc	14	Threshold cover / door infill	1pc
4	Roller	4pcs	15	Threshold	1pc
5	Glass door	1pc	16	Countersunk screw ST4.2.30	4pcs
6	Handle	1pc	17	Water seal strips	2pcs
7	Support - glass to guide rail	1pc	18	Rtn Panel Bottom extrusion	1pc
8	Guide rail bracket – to wall	1pc	19	Rtn Panel Wall extrusion	1pc
9	Stationary glass wall extrusion	1pc	20	Round head screw ST4.2.25	3pcs
10	Round head screw ST6mm	1pc	21	Glass Connector	1pc
11	Alan Key 3mm, 4mm, 5mm	1set	22	Return glass panel	1pc

**NOTE:** Unpack your unit carefully and inspect it. Lay it out and identify all parts using the detailed diagram and packing list in your manual as a reference. Before discarding the carton, check for small hardware bags that tend to fall to the bottom of the box. If any parts are damaged or missing, please contact Henry Brooks for replacement.

**Items 18, 19, 21, 22 only included when return panel ordered**

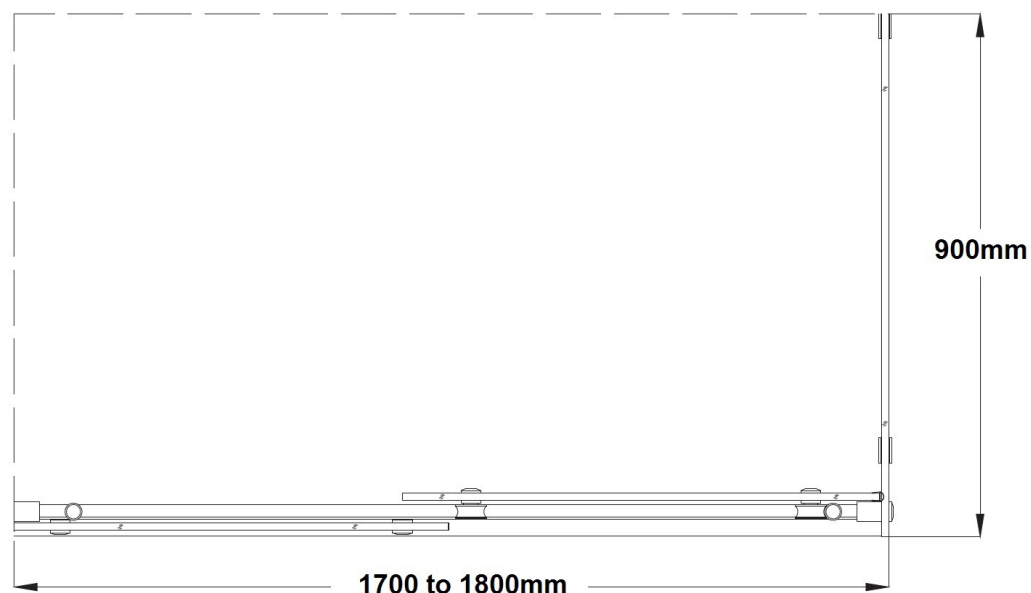
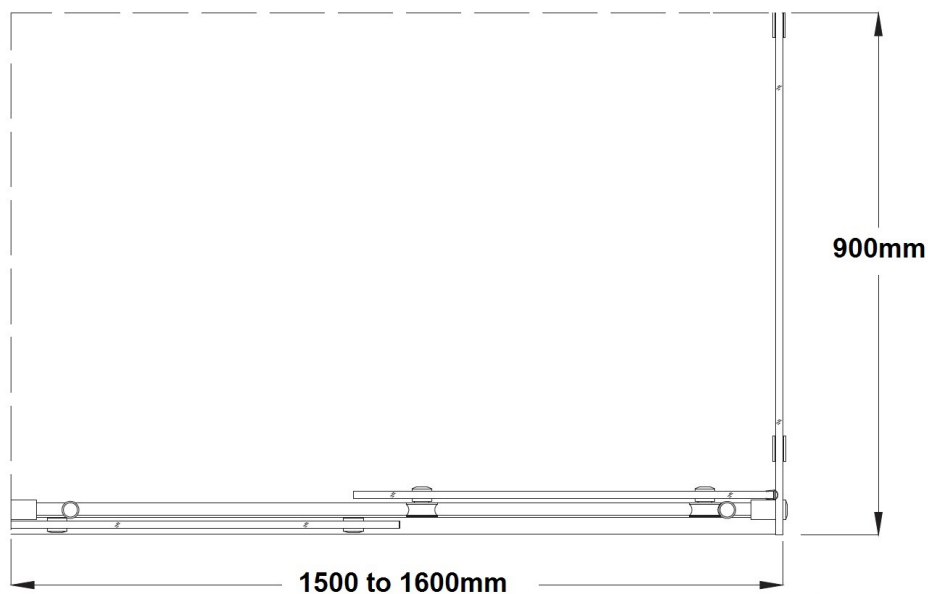
# Shower Enclosure Plan

Dreamline Showers doors are available in 3 std sizes as shown below all with a nominal width of 900mm. Each can be cut down by up to 100mm to suit your installation



## Notes

The measurements are given to the external side of the glass.



# Shower Enclosure Installation

## Day 1

### NOTES:

Ensure all extrusions are plumb and parallel to the edges of the shower tray or tile nib and any liner or tile line.

Silicone should be applied to the back of each of these extrusions then screwed to shower liner / tiles and tray / tiles.

### Recommended installation order

1. Attach the bottom extrusion **18** for the bottom of the return panel glass to the threshold / plinth / tile / floor with silicone.
2. Attach the wall extrusion **19** for the glass return panel to the wall, ensuring it is lined up correctly with the bottom extrusion.

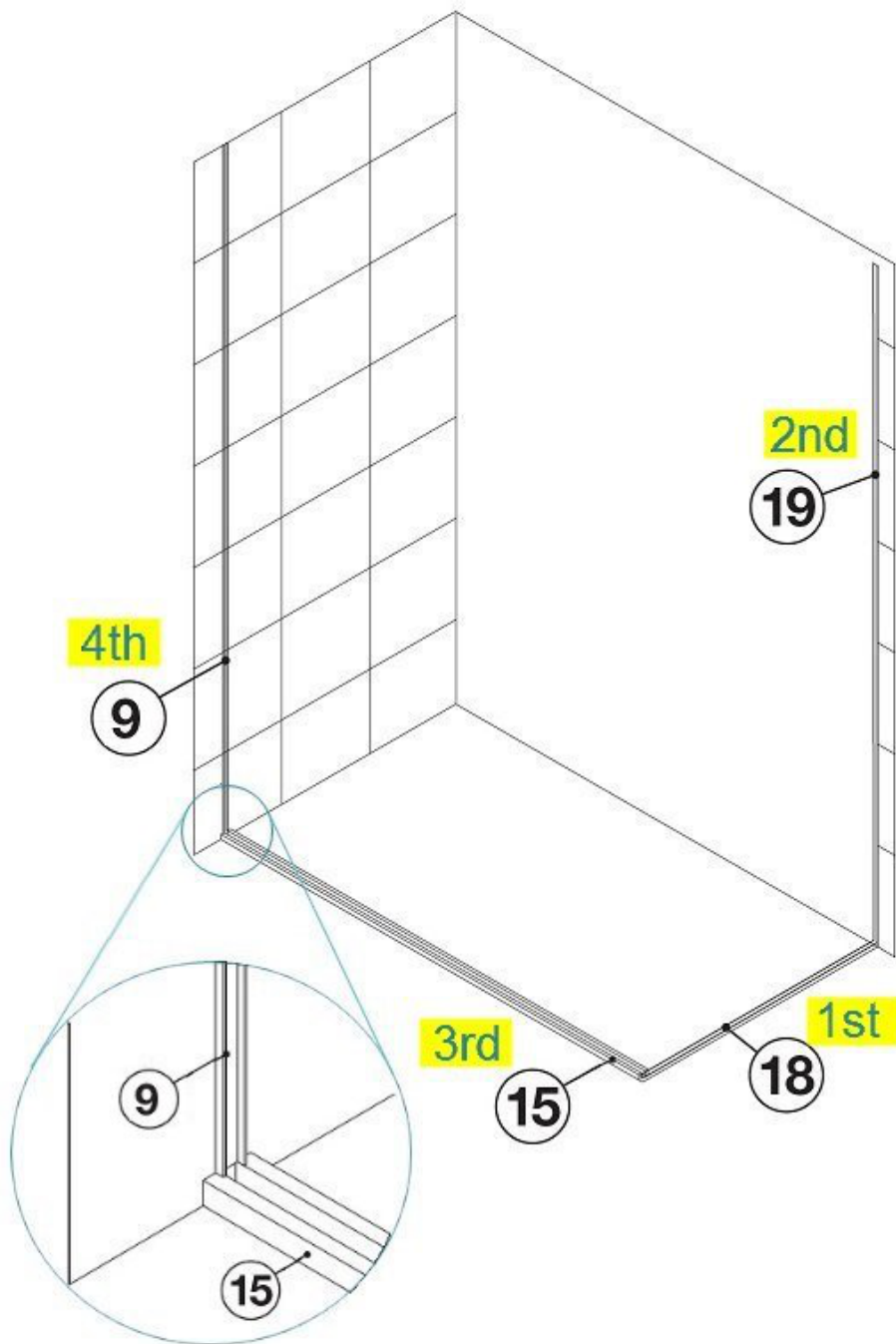
3. Attach the threshold **15** which will need to be cut to fit.

Place the threshold **15** into the designated position, which is level with the front of **18** and parallel to the back wall.

4. Attach Stationary Glass wall extrusion **9**

The internal profile of the stationary glass extrusion **9** when fitted, has to align with the groove in the top of the threshold **15**.

Once these extrusions are installed we recommend you leave them for 24 hours to cure before you continue.



# Fixed Panel Installation

## Day 2

Once the silicone has cured install both fixed glass panels.

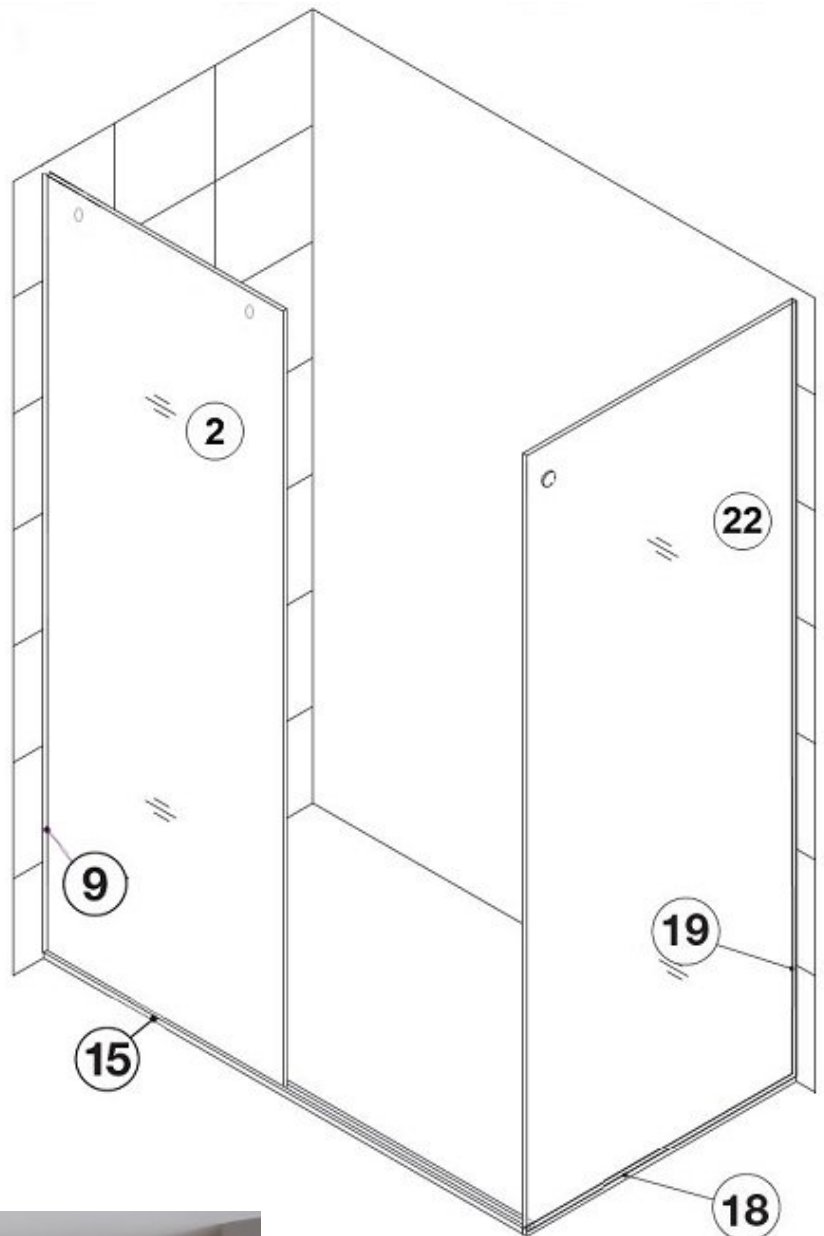
To fit return glass panel **22**, first apply silicone into return panel bottom extrusion **18** and the return panel wall extrusion **19** making sure that it is vertical.

Then fit the stationary glass panel **2**, first apply silicone into the threshold extrusion **15** and the stationary glass panel wall extrusion **9** again checking that it is vertical.

And that the holes are at the top of both panels and level with each other as shown by the orange line in the photo below.

### Note:

Once these panels are in place and supported we recommend they are left for 24 hours for the silicone to cure.



# Fitting Guide Rail

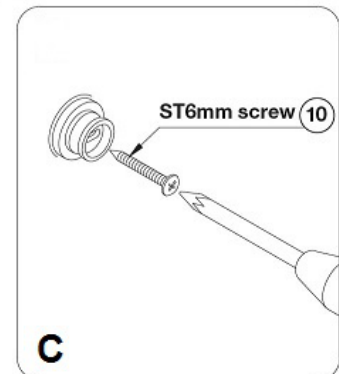
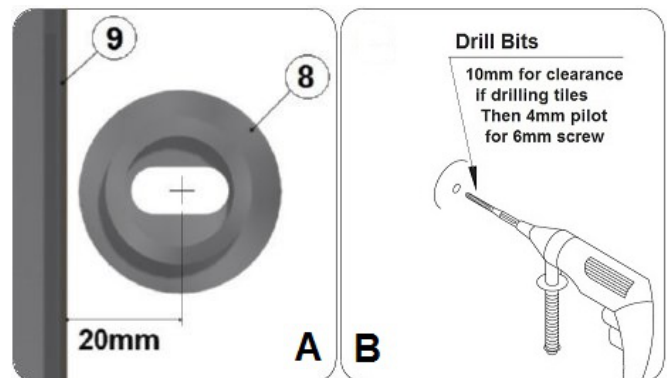
Fit the male part of Glass Connector **21** to the Glass Return Panel **22**.

The photo to the right shows the Guide Rail Bracket **8** fitted in place prior to the Guide rail being fitted.

Fit Guide Rail Bracket **8** with a center of 20mm from the edge of the Stationary Glass Panel Wall Extrusion **9** and level with the center of the 2 holes in the stationary glass panel which should be level with male part of Glass Connector **21** previously installed

There is a small amount of adjustment in the Glass Brackets **7** if need be.

**Note: When drilling through tiles, use a 10mm drill bit just to get through the tiles. Then, drill a 4mm pilot hole for the 6mm screw.**

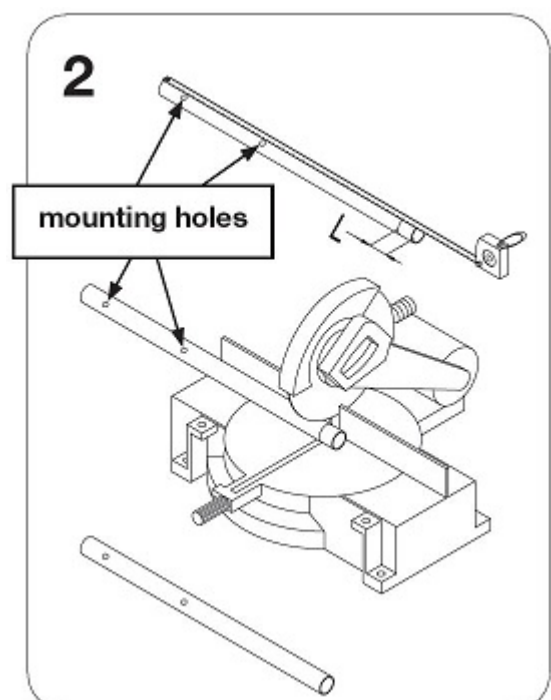


1. Measure the distance between the Glass Connector **21** and Guide Rail Bracket **8**.  
Checking the return panel is vertical.

**Note:**

To cut the rail you will need a drop saw with steel cutoff blade, or a hand hacksaw.

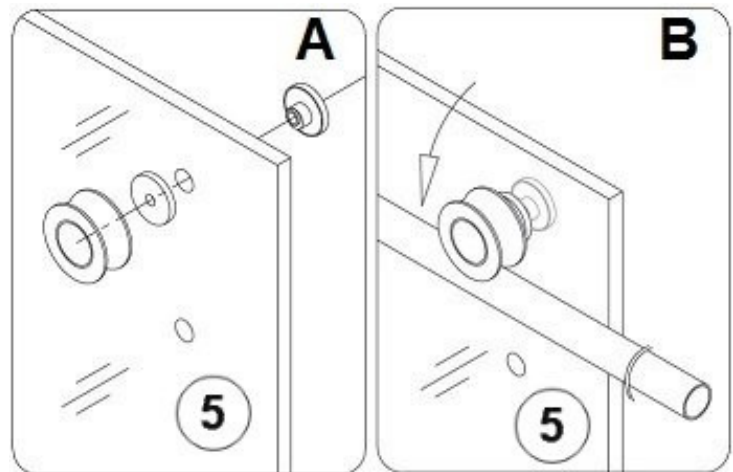
When cutting guide rail to size, only cut the furthest away from the 2 mounting holes in the guide rail **3**



## Attaching Rollers to Door

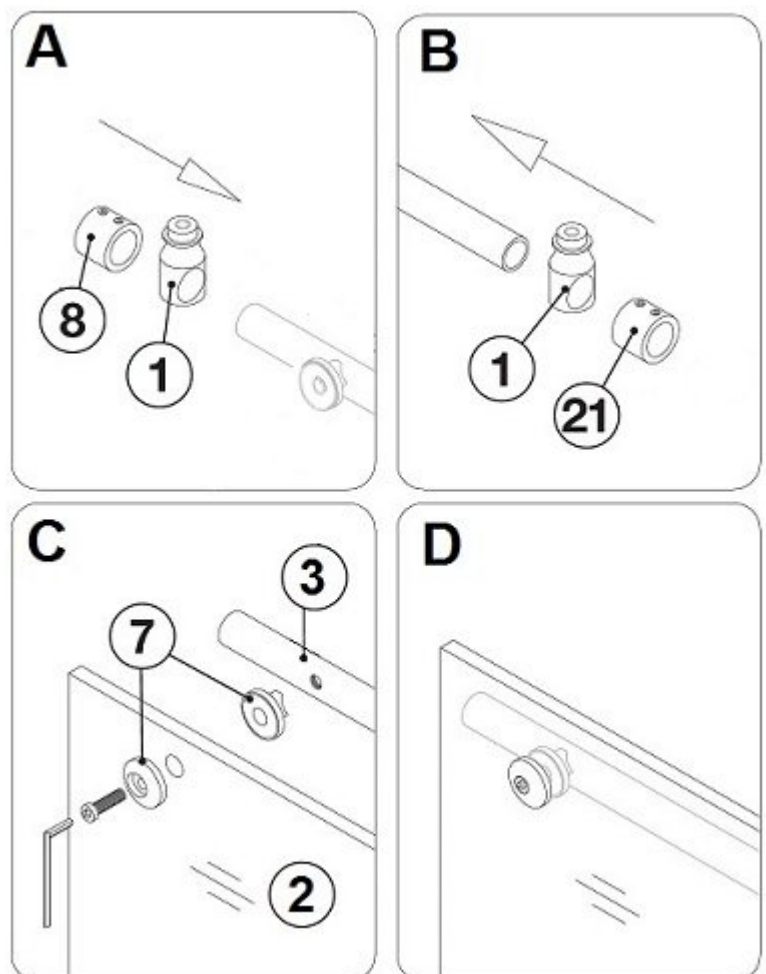
### NOTE:

Before installing the Guide Rail you need to attach the top Rollers **4** to the glass door **5** and take into the shower enclosure, leaning it against the wall, to fit later.



## Fitting Guide Rail to Stationary Glass

- Slide the door stoppers **1** on each end of the guide rail and secure them temporarily.
- Slide the locking rings for both guide rail brackets **8** and **21** on each end of the guide rail and temporarily secure them.
- Lift the guide rail **3** up between the male part of guide brackets **8** and **21** holding in place while you loosely fit both **7** brackets into place, you can then slide locking rings into position and on checking return glass **22** is vertical you can tighten the alan keys.
- You can then tighten screws in glass brackets **7** to the stationary glass panel **2**. There is adjustment within bracket **7** if needed.



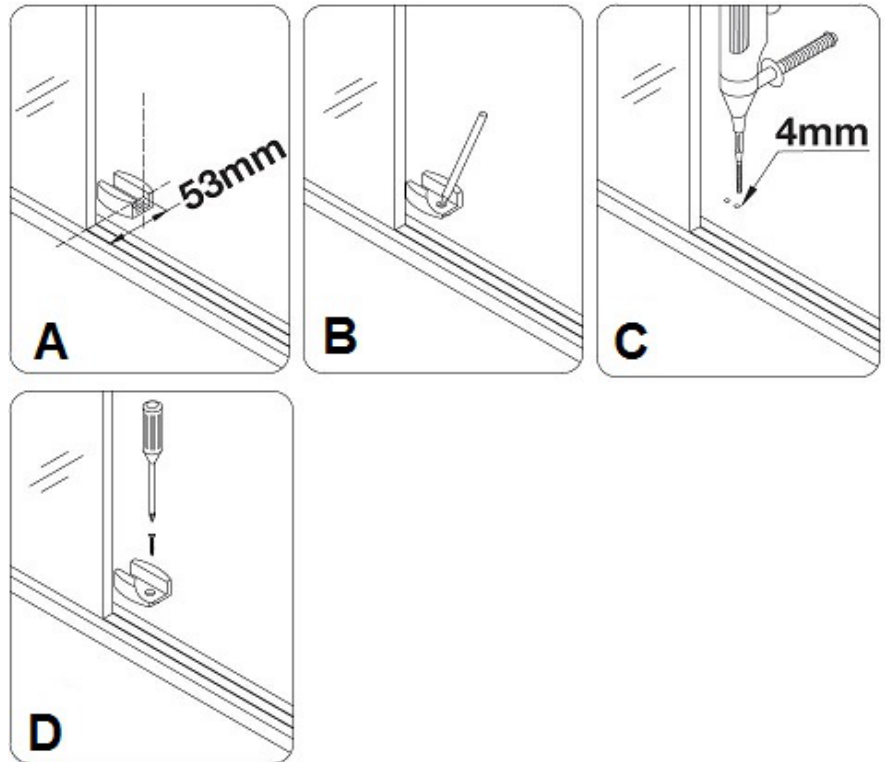
## Guide Block

**A** Place the guide block **12** on the shower threshold / tray and parallel to the stationary glass **2**. It should not pass beyond the vertical edge of the glass.

- Take a measurement to ensure the distance between the front edge of the glass and the centre line of the guide block is 53mm. Hold it firmly and mark for drilling the hole.

**C** Remove the guide block **12**, drill the hole in the shower threshold / tray using a 4mm drill bit

**D** Apply silicone to the underside of the guide block, and then fasten the guide block to the floor with the counter sunk screw.



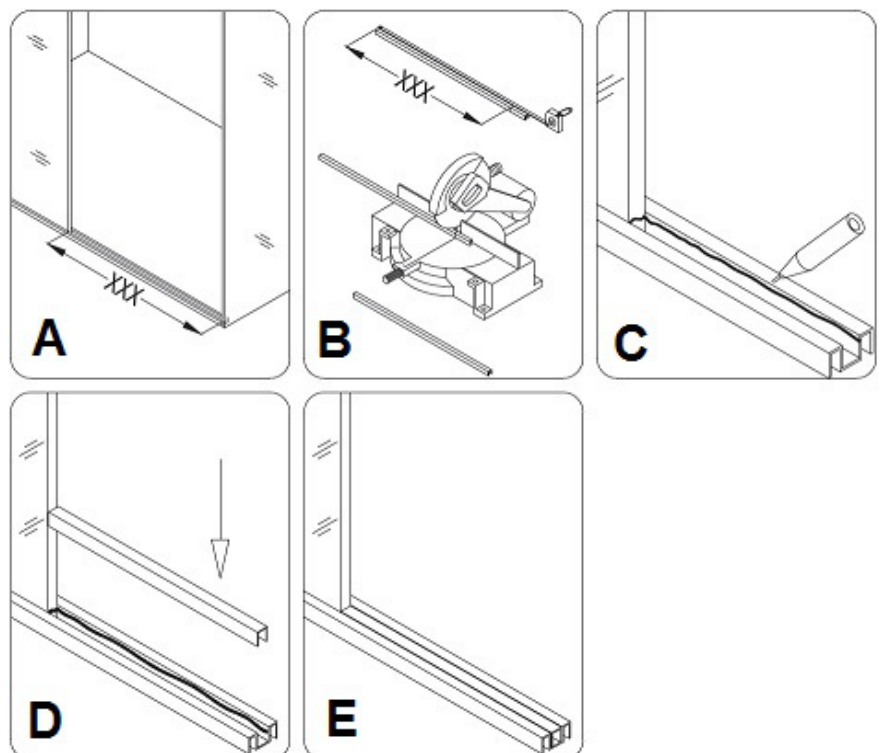
## Threshold Cover

**A** Measure the distance between the stationary glass **2** and the return panel.

**B** Cut the threshold cover **14** to the size of your measurement. (steel cutoff saw or a hacksaw)

**C** Apply a small amount of silicone into the threshold **15** channel

**D** Push the threshold cover into the threshold **15** groove.

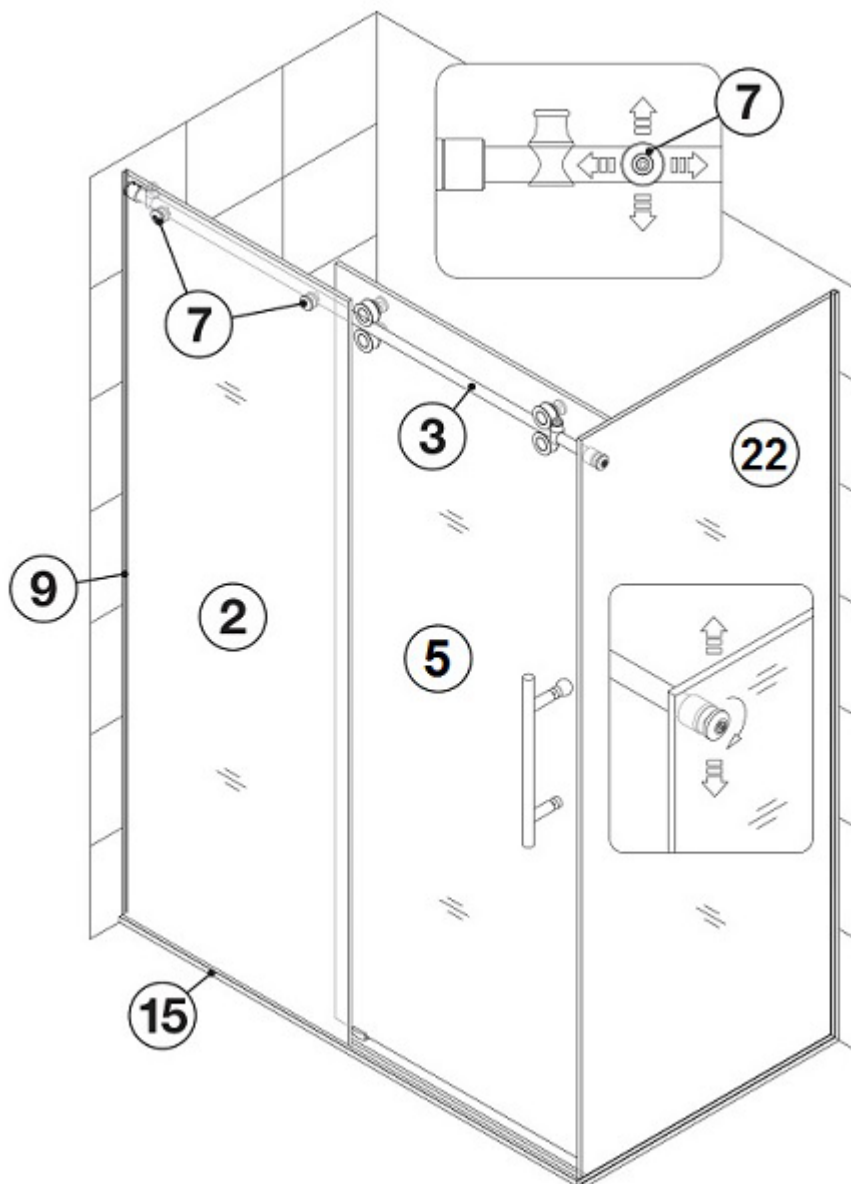


# Installing the Sliding Door

Lift the door panel **5** into place guiding it into both the lower guide block **12** and the rollers onto the rail **3** at the same time, keeping the door vertical helps.

Ensure the smooth operation of the roller door.

- Then mount two lower rollers **4** onto the glass door to secure the glass door to the guide rail.

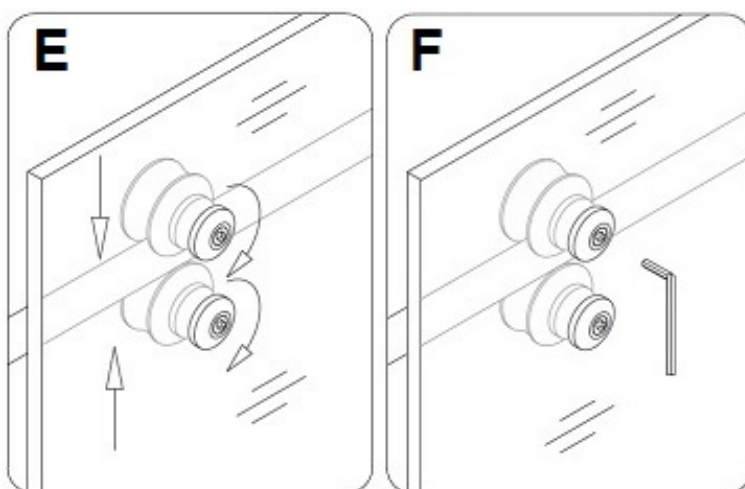


## Note:

There is an eccentric cam that is part of the fastener/roller combination that goes through the glass. This allows you to adjust the rollers and therefore the door, up or down, to make it run true and correctly align with the guide block.

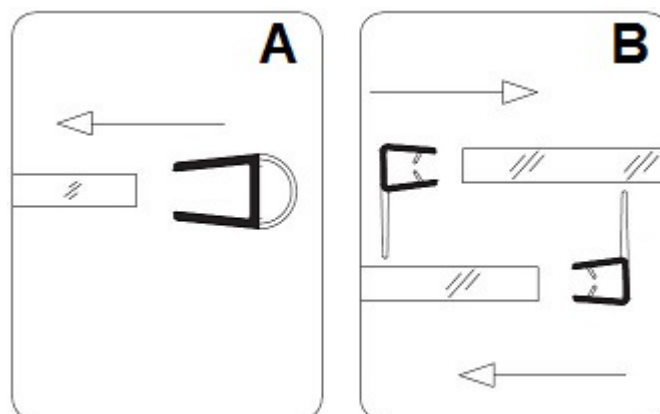
Try and take some of the weight of the door off of the rollers, when you adjust them, to make it easier to turn the cam

Adjust the fasteners on both top rollers **4** to ensure that the bottom edge of the glass door **5** does not touch the bottom of the guide block **12**. Tighten the fasteners and ensure a smooth rolling action.



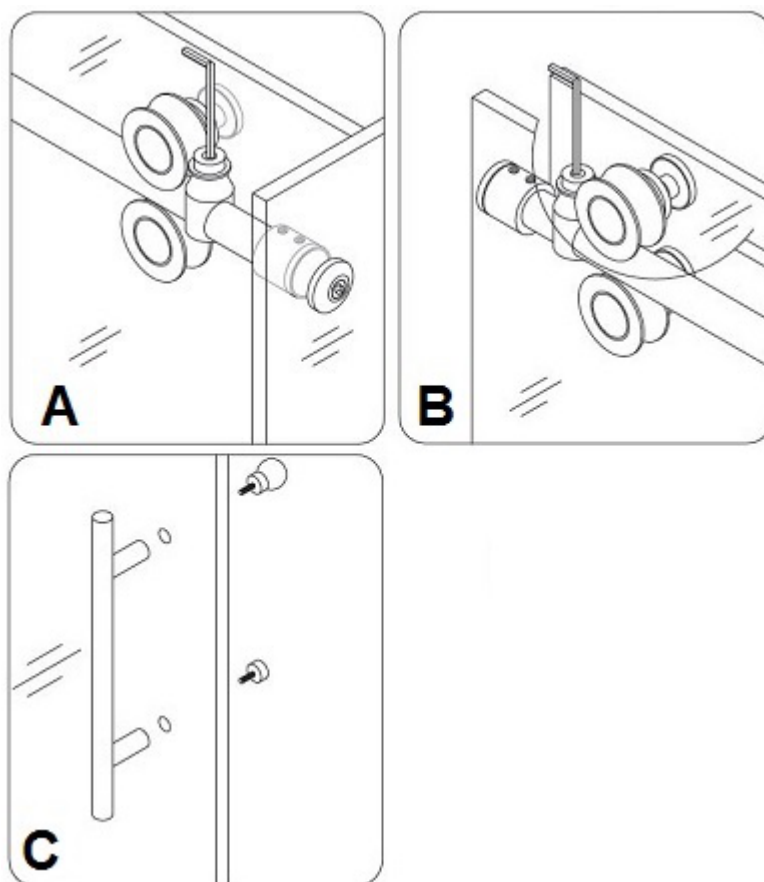
## Bumper Strip

- A** Press the bumper strip **13** on to the leading vertical edge of the glass door **5** then
- B** Press the water seal strips **17** on the vertical edges of the stationary glass **2** and the other end of the glass door.



## Door Stoppers

- A & B** Adjust both door stoppers **1** to ensure that they are positioned upright and the glass door **5** is in its maximum opening and closing range. Tighten the alan screws to fasten them in place.
- C** Mount door handle **6** to the glass door.

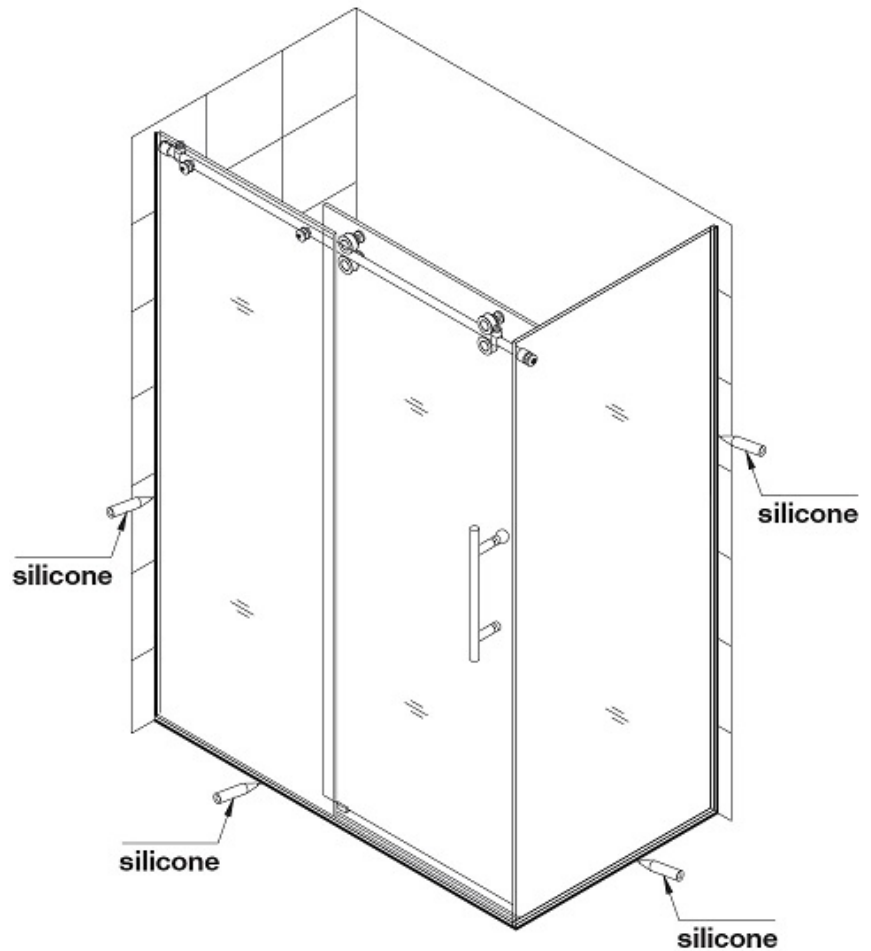
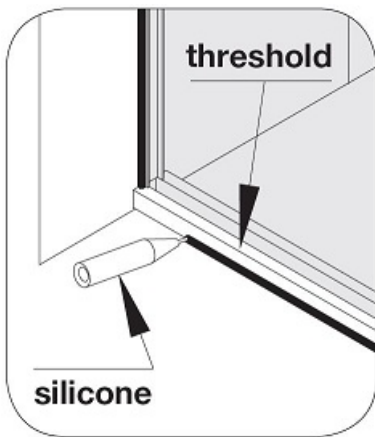


# Sealing the Shower

## Instructions

- Apply silicone along all outside edges as shown in the diagram.

Clean excess silicone off with tissue paper.



## Product Maintenance

The acrylic back walls should be wiped off with a soft cloth or squeegee after each time the shower is used.

Rinse and use only a soft cloth or squeegee on the glass surfaces.

**Clean to a sparkling finish with any glass cleaner**

Never use petroleum. Ammonia, bleach, acid or lemon based cleaners on any part of the shower.

Never use abrasive cleansers, metal brushes or scrapers, that could scratch or dull the surface of the acrylic liner, glass or any stainless parts.



Ph. 09 913 3110 Fax. 09 913 3113  
5 Smales Rd, East Tamaki, Manukau  
P.O.Box 58031 Greenmount, Manukau 2141

AUCKLAND // WELLINGTON // CHRISTCHURCH

We trust you will enjoy your new Dreamline shower from  
[www.henrybrooks.co.nz](http://www.henrybrooks.co.nz)