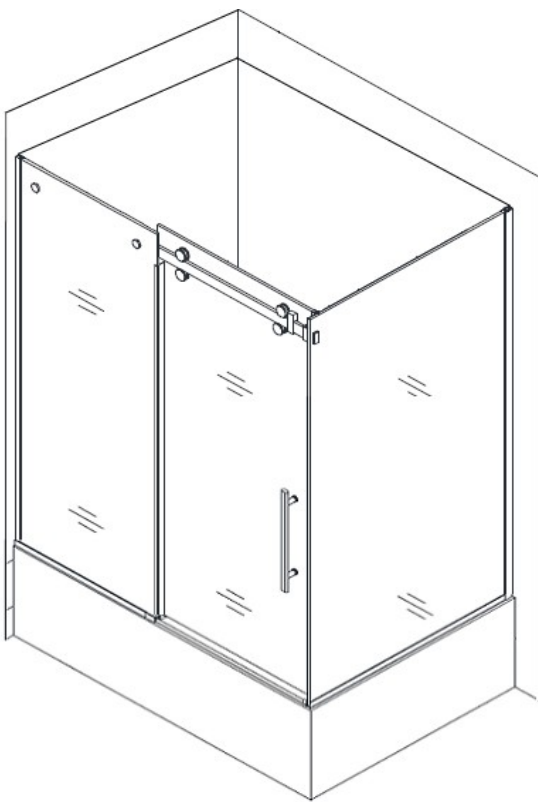




Urban Bath door instructions

Installation Guide (Rectangle Rail)



Thank you for your order



Ph: 09-9133110 Fax: 09-9133113
5 Smales Road. East Tamaki
Auckland

AUCKLAND // WELLINGTON

www.henrybrooks.co.nz

Urban Shower Door

Preparation

1. After opening all boxes and packages, read this introduction carefully. Check that all of the needed parts are included in the package, by marking all the components on the detailed diagram of the shower enclosure. Examine for any shipping damage. If the unit has been damaged, or has a manufacturing fault, or has missing parts, please contact our customer service department within five days of the delivery date.

2. You must have all the correct plumbing and drainage components installed before you start to install the shower doors.

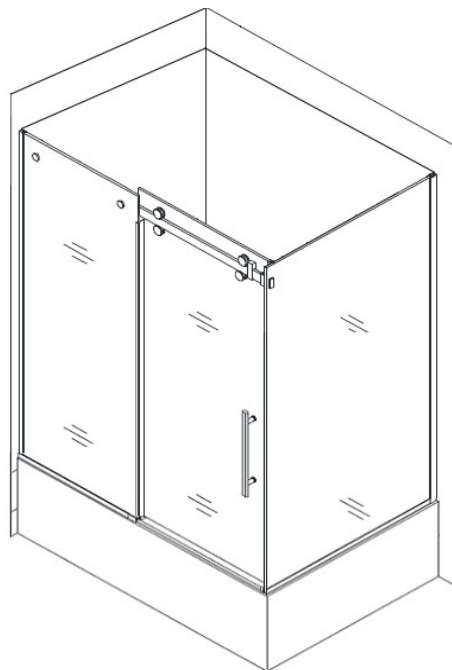
3. Please ensure prior to installation, that the installation surface is true and level, and robust enough to support the total weight of the shower unit. Also make sure the walls are true and plumb.

NOTE: Some adjustments and drilling might be necessary during the installation process.

NOTE: We strongly recommend installing the door guide rail bracket to the studs or preferably pre-install 90x45mm or 140x45mm wood behind the linings to take the brackets rather than using wall anchors.

4. This door can be fitted to
A. Baths with an upstand,
ie our Sophia bath

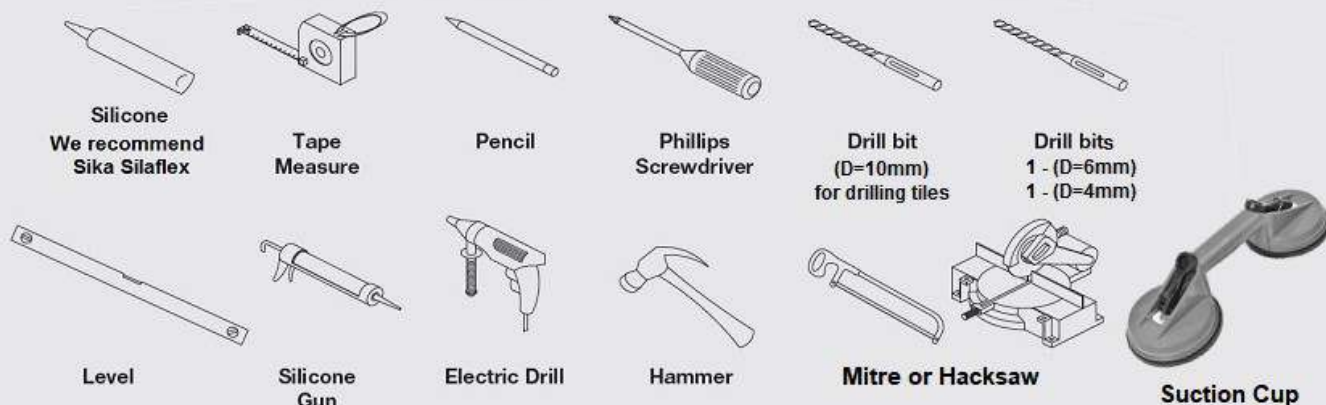
5. This unit must be installed against completely finished floor and walls.



We recommend placing a drop cloth or protective cardboard into the base of the tiled shower or acrylic shower tray to prevent damage caused by footwear or dropped tools.

The order of installation described in the following pages is important.

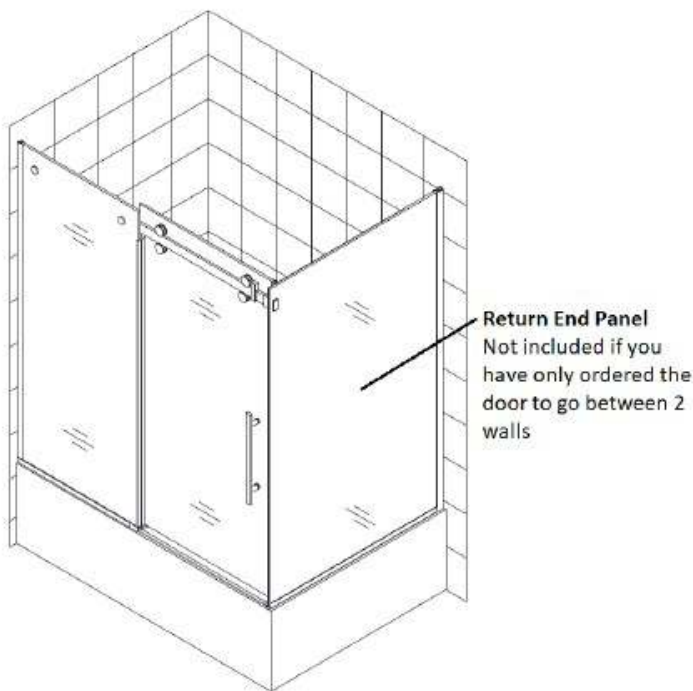
Tools Required



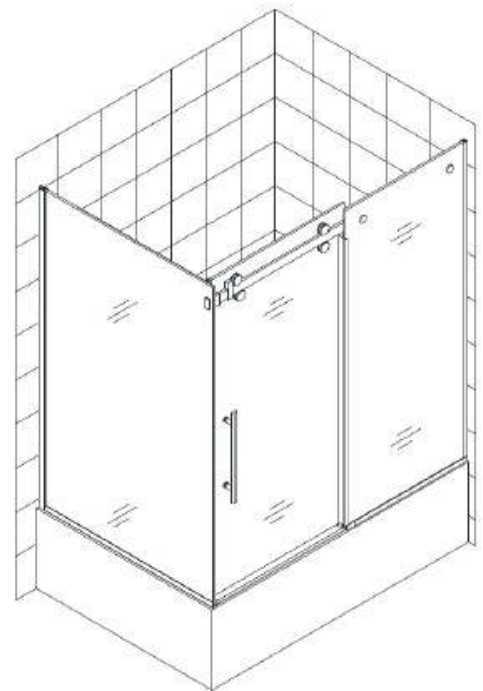
Please follow these instructions carefully

These instructions are suitable for a bath door installation **with or without** a return (end) panel.

Our product may have changes without prior notice



Left Hand Installation



Right Hand Installation

NOTE: This door is reversible for right or left-hand door installation. The right-hand door installation is shown as an example throughout this manual. For the left-hand door installation, simply begin on the opposite wall and reverse the orientation of the steps shown.

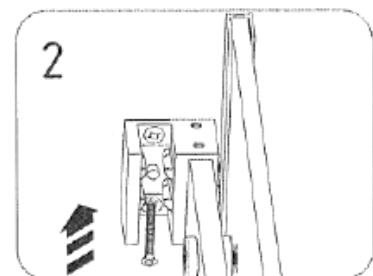
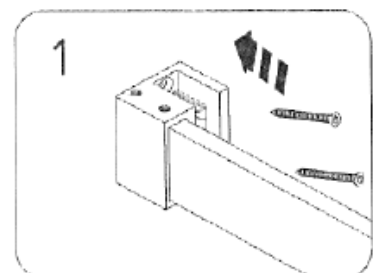
UPDATE

We are updating the Guide Rail Bracket (part #6)
And as stock is updated you may get the new bracket.

Which is pictured on the right.

Please use the new part wherever
'Guide Rail Bracket' (part #6) is mentioned

Use the screws as shown when screwing into your wall
When fitting to the Glass you will need to use the supplied
block that lines up with the hole in the glass.



Recommended Wall Framework

To ensure a stable shower door installation we recommend installing extra framework where your shower door contacts the wall as shown in the image below.

With the bath in place determine the position of any extra framing.
See separate tray and liner instructions, go to link below
<https://www.henrybrooks.co.nz/installation-instructions/>

In this case the Std framing is light in colour the extra recommended framing is in the darker colour.

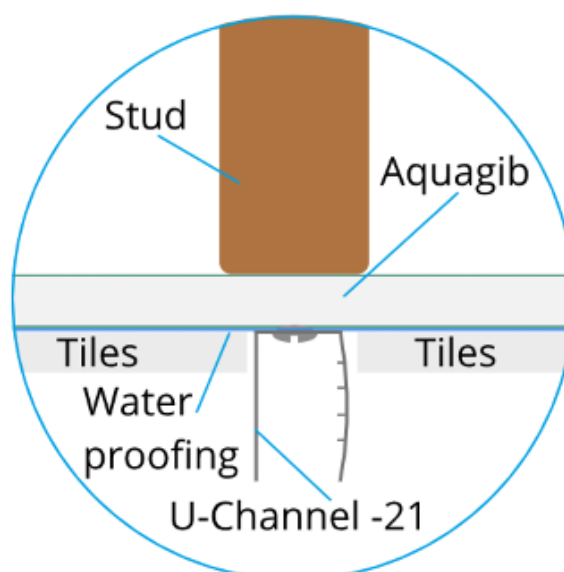


For further info on Shower tray preparation and install
Click on (or copy and paste into a browser)
<https://www.youtube.com/watch?v=K38V9-wUvHg>

Installing Door Return to Tile Walls

This tip is for the fixing of the Return Panel only in a 2 walled corner installation, if you have a 3 wall install this is not required.

Install your Shower Tray and waterproofing as usual. Once the waterproofing is dry (before you lay your tiles) fix the **Wall U-channel – aluminium (21)** directly to your waterproofing following instructions on Page 7 & 8.



Tiles installed after U-Channel

Recommendations before you start

You should consult your local building codes on questions on installation compliance standards. Building and plumbing codes vary by location, and our local dealers or distributors are not responsible for code compliance standards for your project.

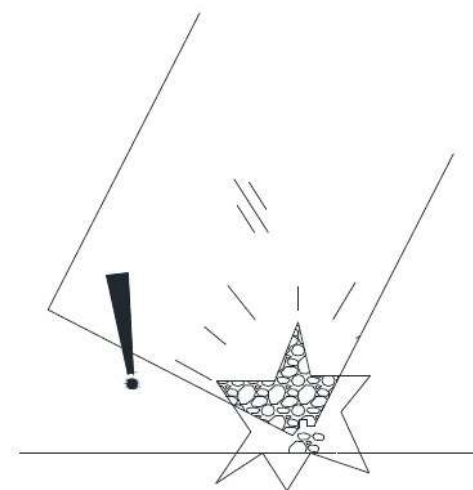
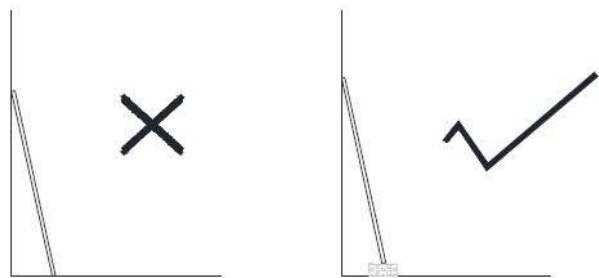
Supplied Wall anchors are for use on **concrete walls** and are **NOT** required for **standard timber stud construction** installations where appropriate wood has been fitted.

Please Note

The glass panels are tempered Safety Glass.

When leaning them against a wall always protect the bottom edges and do not knock a corner against a hard surface as the glass panel is likely to shatter.

Caution!



These instructions assume that your plumbing, shower tray and wall linings are already installed level, plumb and square.

Door Installation Order

- 1st Install the Return Panel (if required)
- 2nd Install the Fixed Glass Panel of the Door Set
- 3rd Fit the Sliding door Set

Bath Enclosure Components - V1

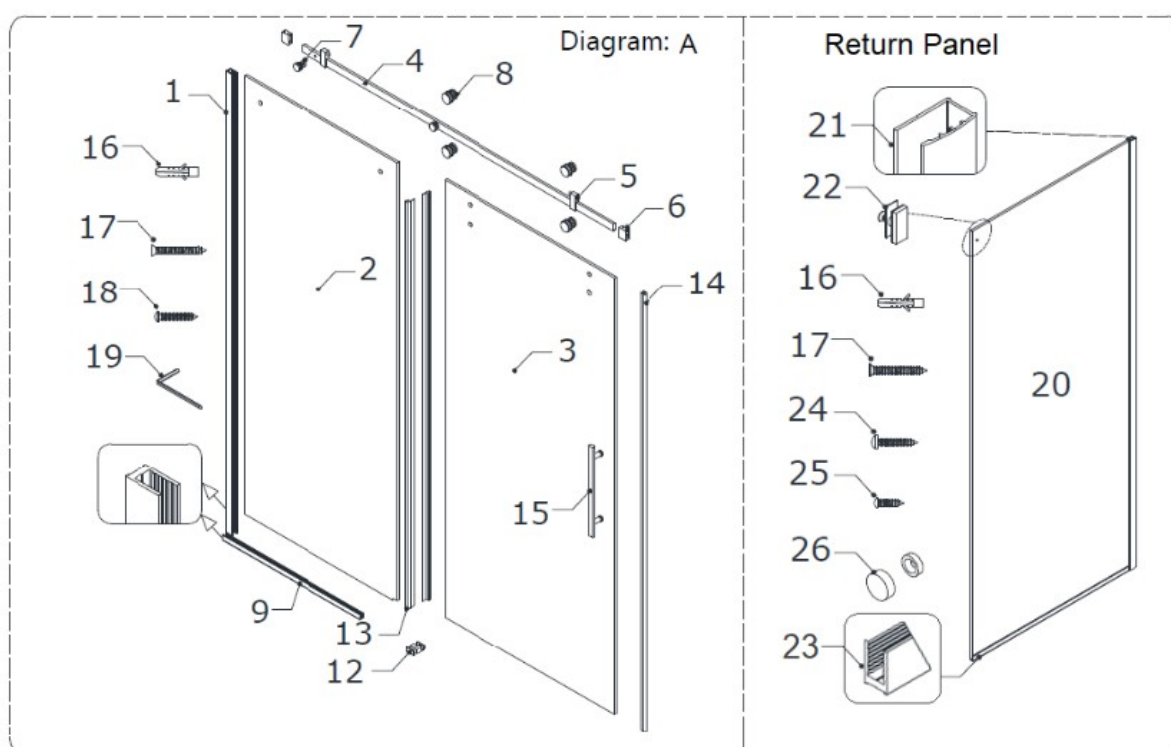


Diagram: A

01	U-channel	1 pc	12	Guide Block	1 pc
02	Stationary Glass	1 pc	13	Anti-water side Strip	2 pcs
03	Door Glass	1 pc	14	Bumper strip	1 pc
04	Guide Rail	1 pc	15	Handle	1 pc
05	Stopper	2 pcs	16	Plastic wall anchor	10pc
06	Guide Rail Bracket	2 pcs	17	Countersunk screw ST4.2 x 40	9 pc
07	Glass Bracket	2 pcs	18	Round head screw ST4.2 x 25	1 pc
08	Roller	4 pcs	19	Allen Key 4mm	1 pc
09	U- channel	1 pc			

Diagram: B

16	Plastic wall anchor	3 pc	23	Bottom U-channel	1 pc
17	Countersunk screw ST4.2x40	3 pcs	24	Big head screw ST4.2x40	4 pcs
20	Return Panel Glass	1 pc	25	Round head screw ST4.2x10	4 pcs
21	Wall profile	1 pc	26	Decorative caps	4 pcs
22	Stationary Glass Connector	1 pc			

After you have checked that all components are there, you will be ready to start the installation of your shower door. Items 16 to 26 in digram B are only included when return panel ordered

NOTE: Unpack your unit carefully and inspect it. Lay it out and identify all parts using the detailed diagram and packing list in your manual as a reference. Before discarding the carton, check for small hardware bags that tend to fall to the bottom of the box. If any parts are damaged or missing, please contact Bathroom Direct for replacements.

Items 20 to 26 are only included when return panel ordered

Please Note If you are installing the door to an Alcove (3 walled) shower you can ignore the instructions for the return panel.
Go to **Step 7** to start.

NOTES:

Ensure all extrusions are plumb and parallel to the edges of the bath and liner.

Silicone must be applied to the back of each of these extrusions before fixing to shower liner.

Recommended installation order

1. The Return Panel is to go inside the bath up-stand.

2. Place the **Wall profile (21)** to the wall inside the lip of the bath and level it vertically. Align the edge of the **Wall profile (21)** to the inside of the pencil mark on the wall lining.

3. Mark the holes on the wall through the holes in the **Wall profile (21)**.
Place the **Wall profile** aside, drill the holes using 3mm drill bit.
Apply silicone along the wall profile and around the holes on the wall.
Place the **Wall profile (21)** back into the designated position and secure it to the wall using 4 of the **Big head screws ST4.2×40 (17)**. *

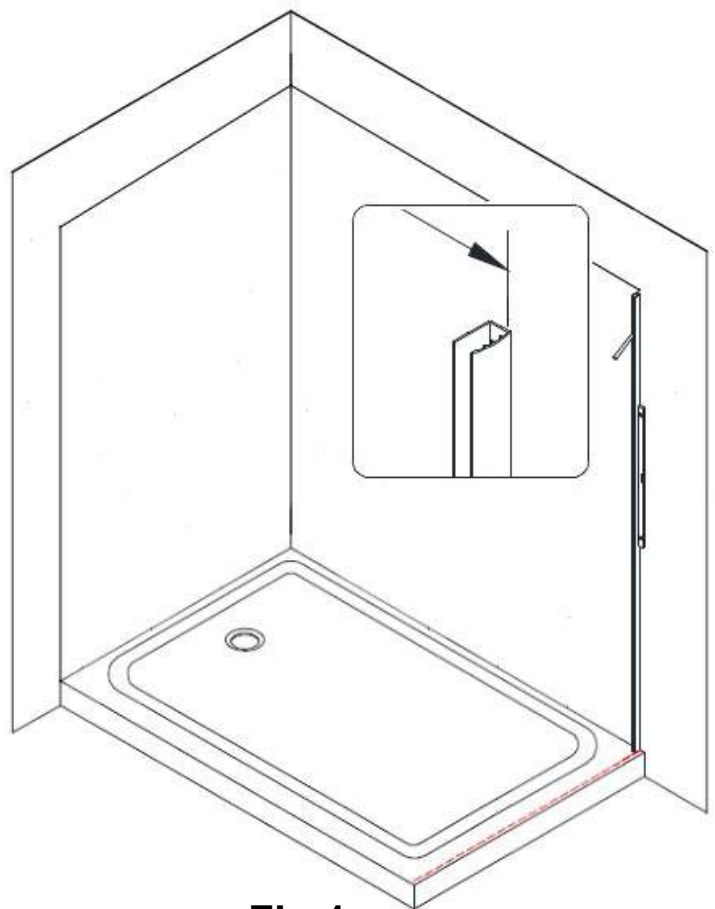


Fig 1

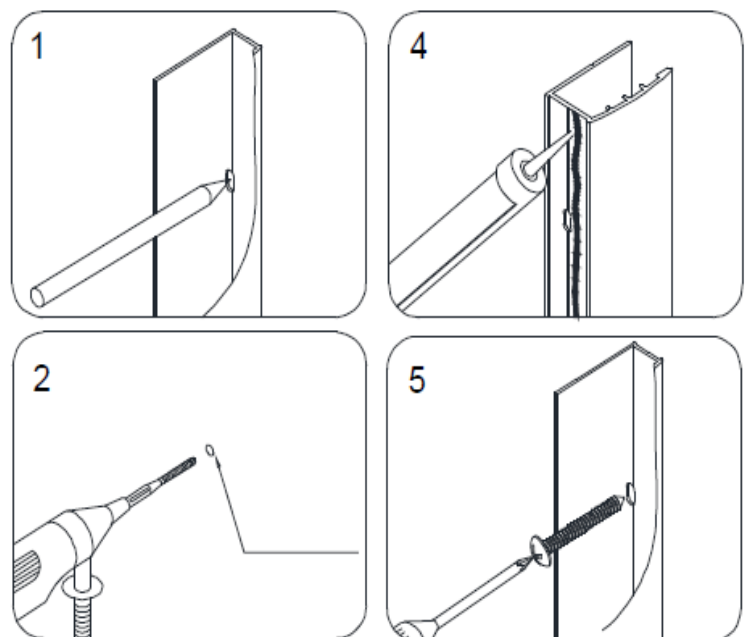


Fig 2

4. Place the bottom **U-Channel (23)** onto the bath, align the edge to the inside of the upstand, mark the drill holes on the tray through the holes in the bottom **U-Channel (23)**.

Remove the **U-Channel (23)** from the tray and drill the anchor holes using a **Ø3mm** drill bit.

Add a bead of silicone to the back of the **U-Channel (23)** and attach it to the tray using four of the **ST4.2 x 40 Countersunk screws (17)**.

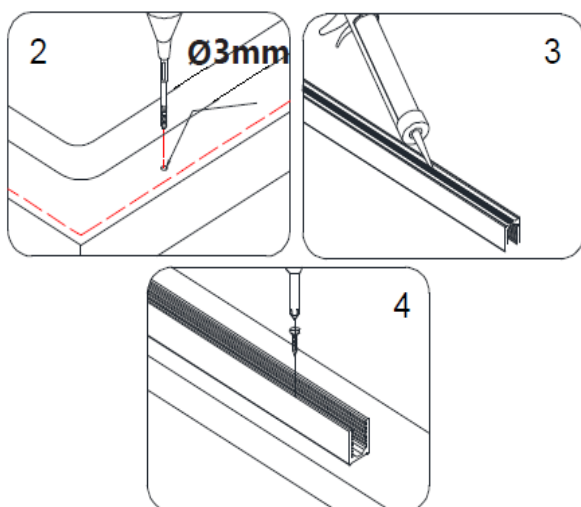


Fig 4

5. Apply a generous amount of clear translucent silicone into the profiles (21) and (23) then slide the **Return panel glass (20)** into the groove of the **Wall profile (21)** and bottom **U-Channel (23)**.

Silicone will ooze out of the 'U'profiles. This can be cleaned up with mineral turpentine while it is still wet or cut off with a razor blade when dry

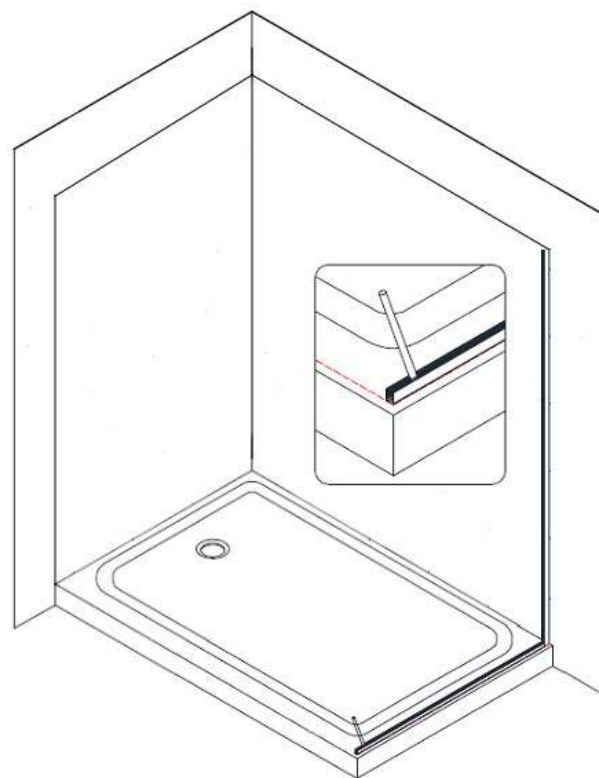


Fig 3

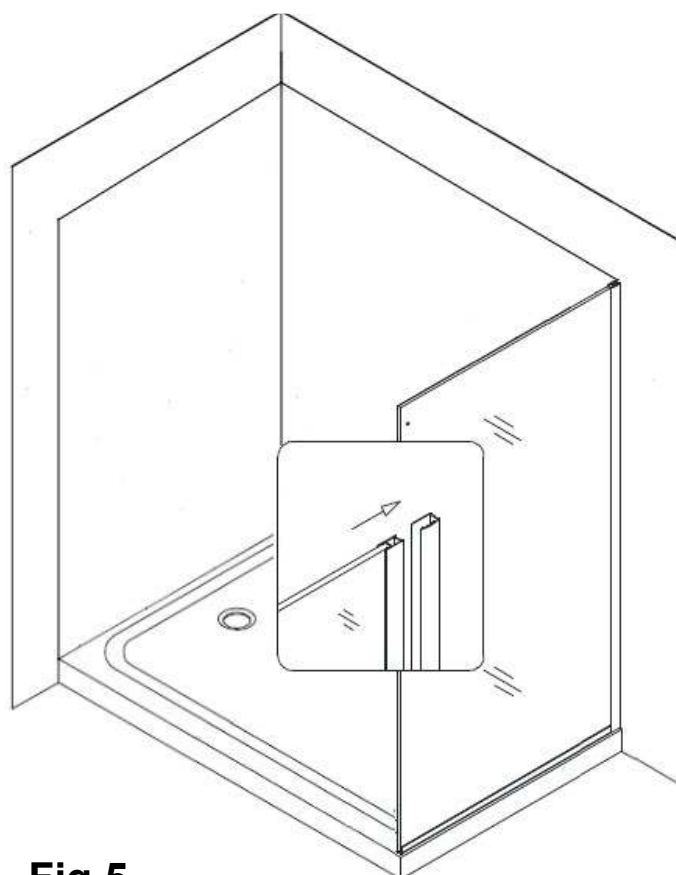


Fig 5

* These instructions show drilling through the shower tray. However our **preferred method** is to silicone them in place (rather than drill holes into the bath) as it will reduce any likely hood of Leaks. This will take longer to install as you need to let the silicone cure before you continue. If you choose to use silicone continue till you complete **step 10** then let silicone set for 24 hours.

6. Attach the **Stationary Glass Connector (#22)** to the top of the **Return Panel Glass (#20)**.

see Fig 6 for details

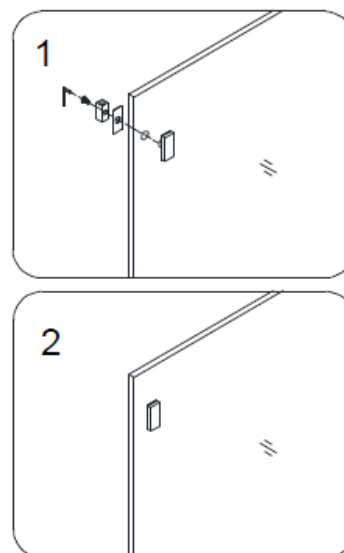


Fig 6

Installing Door - 1st steps

Installing Fixed Glass

7. Align the edge of the **U-Channel (9)** inside the Bath side roll and parallel to the front edge of the bath.
8. Mark where you need to drill then Remove the **U-Channel (9)** from tray, and drill the anchor holes using a **3mm** drill bit (or clearance hole if tiles).

See notes on bottom of page 7

Add a bead of silicone to the back of (9) then position and fix to tray using **ST4.2 x 40 Countersunk screws (17)**.

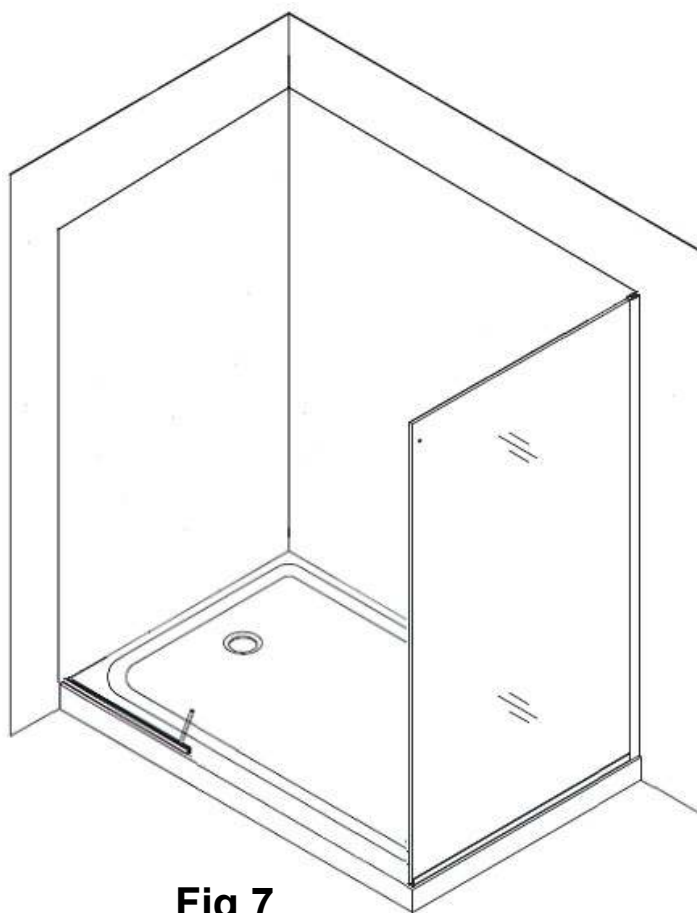


Fig 7

9. Align **U-channel (1)** groove with the threshold **(10)** or lower U-channel **(9)** use a level to plumb the **U-channel (1)** and mark the hole positions on the wall with pencil.

Note: On the **shower door** we have found some of the #1 rails are 5mm longer than needed, If you want to have it level with the top of the glass you may **need to trim it.** 10. Remove the Vertical **U-Channel (1)**

from the wall then drill holes using a 3mm drill bit.

Add a bead of silicone to the back of **(10)** then position and fix to wall using ST4.2 x 40 Countersunk screws **(17)**.

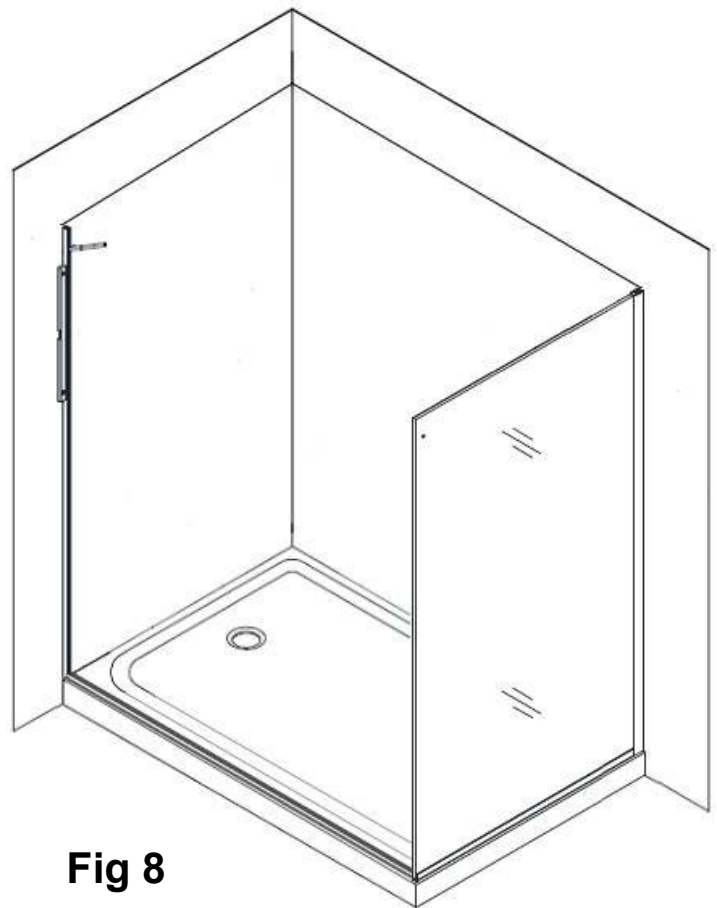


Fig 8

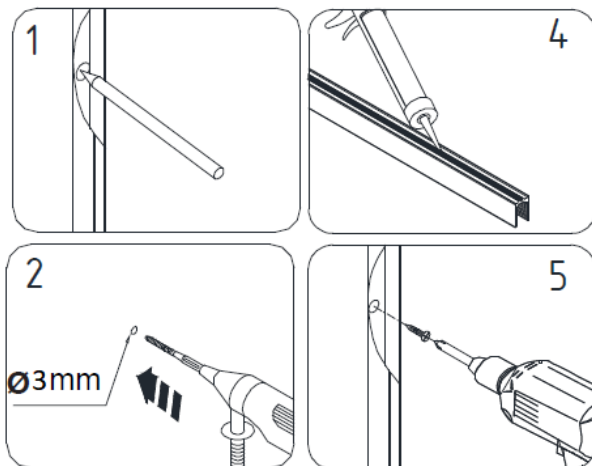


Fig 9

Once these extrusions are installed we recommend you leave them for 24 hours to cure before you continue if you've only used silicone.

Installing Door - continued

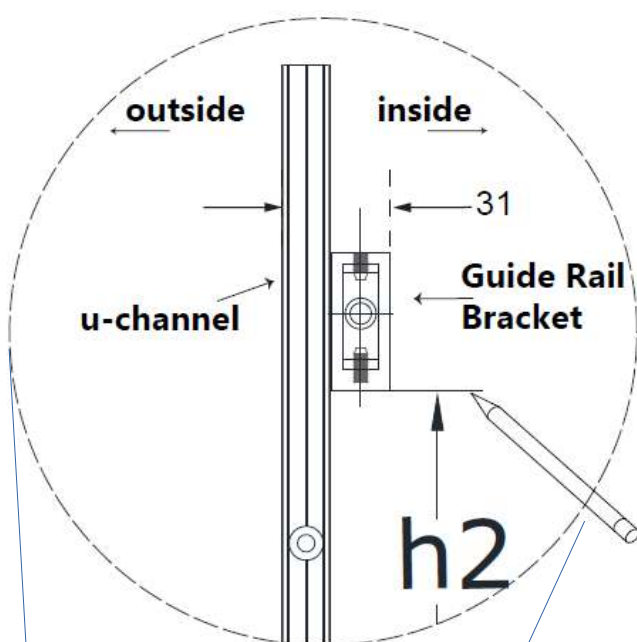


Fig 12

11. To position the **Guide Rail Brackets (6)**:

From inside of the shower, measure up from the tray to the bottom of the **Guide Rail Bracket (6)** using **Table 1** below. While holding the bracket against the edge of the installed **U-channel (1)**, mark the wall at the bottom of the bracket.

GUIDE RAIL BRACKET HEIGHT

MODEL HEIGHT	h2 =
1545 bath	1439

Table 1

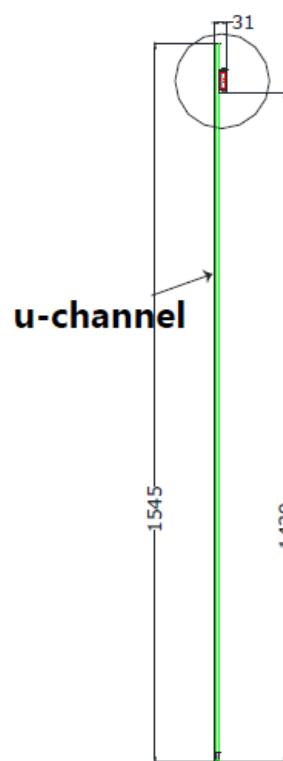


Fig 11

Note: We've found that for some people fitting the Stationary Glass #2 in place temporarily and using a level from the holes in the glass to mark the guide bracket hole is easier than using the measurements in Fig 11.

- 12.** Hold the **Guide Rail Bracket (6)** in the marked position and mark the hole for Drilling through the **Guide Rail Bracket (6)** using a pencil (or center punch).

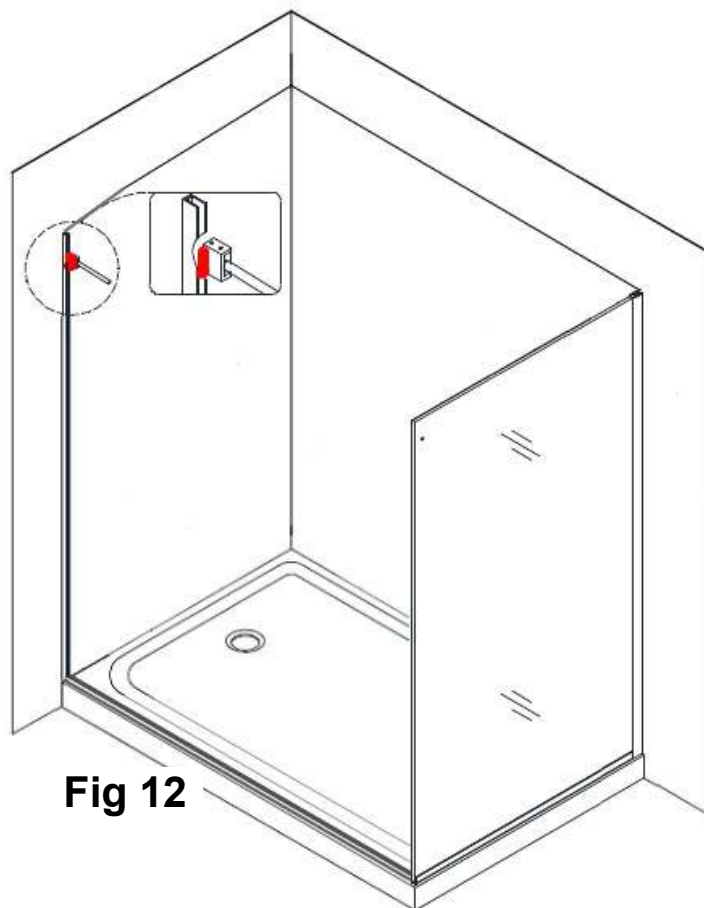


Fig 12

- 13.** Drill a **Ø3mm** anchor hole. Separate the **Guide Rail Bracket (6)** components (6a and 6b). Install the **Guide Rail Wall Bracket (6b)** to the wall using one **ST4.2 x 40mm Countersunk screw (17)**.

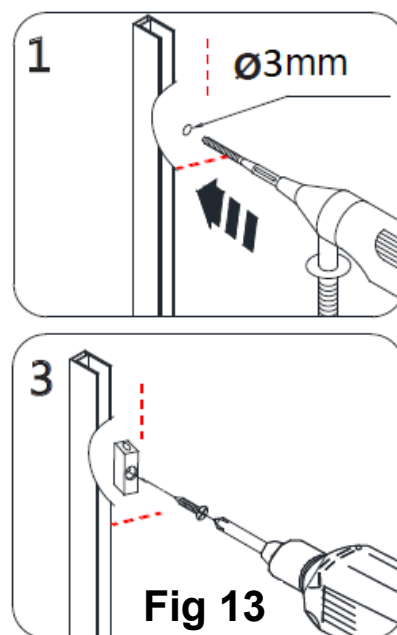
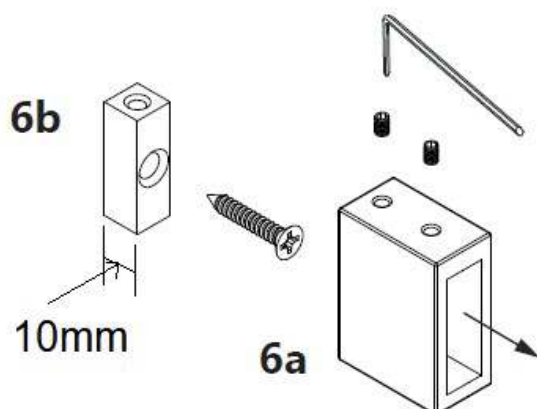


Fig 13

***NOTE: Installation of the Guide Rail brackets into a stud or extra framing is strongly recommended.**

- 14.** Measure the finished opening width at the Height where the **Guide Rail (4)** will be fitted.
- wall to wall for an alcove installation or wall to Glass when the install has a return panel.

Note:

You will need to reduce your measurement by the width of the mounting blocks **(6b)** that are part of **(6)** the Guide Rail Bracket (each is 10mm wide)

Example only:

If your measurement is 1889mm you should cut at 1869mm to allow for these blocks.

Note: Cut ONLY from the door end - the opposite end to the holes

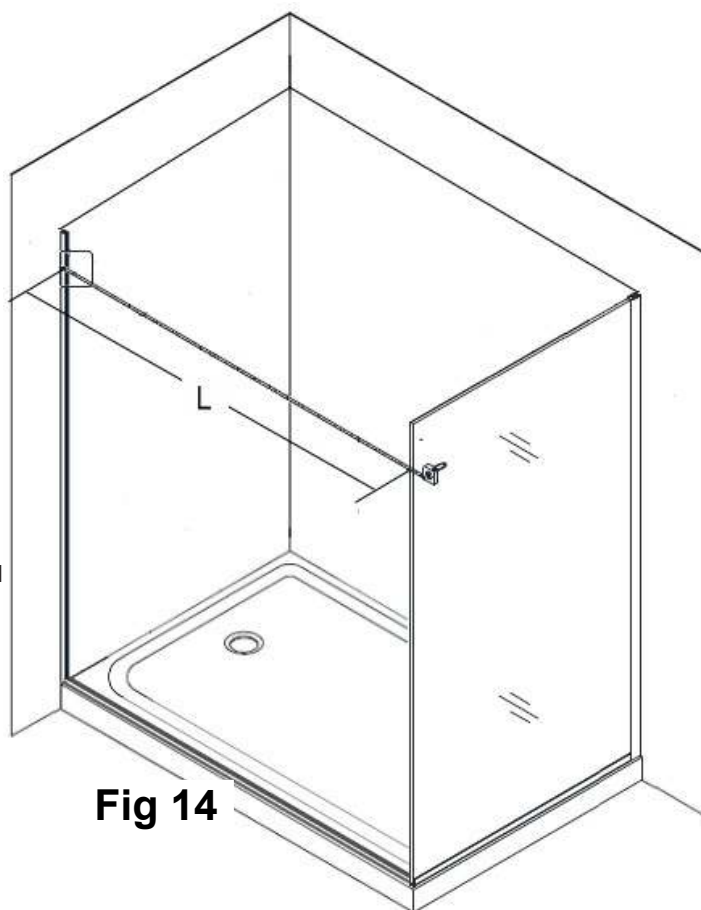


Fig 14

Use a metal file to remove any burrs from the cut end of the **Guide Rail (4)**.

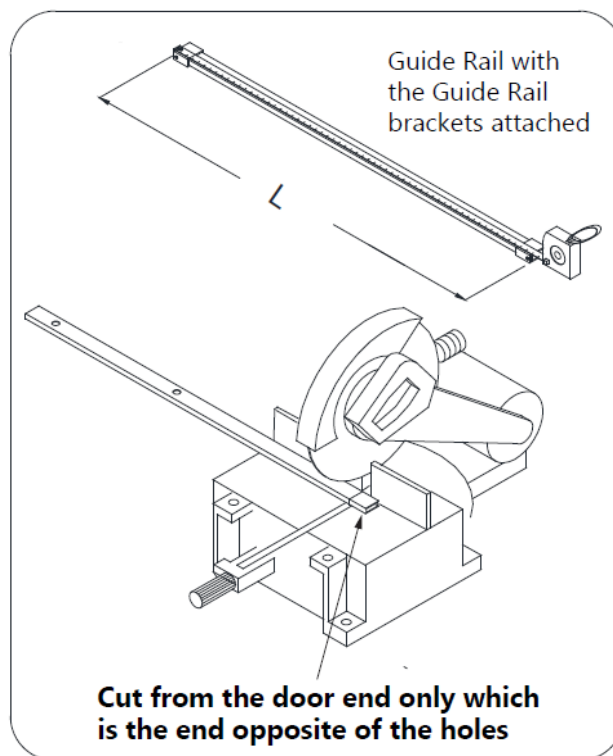


Fig 15

Installing Guide - Bath

- 14.** This is to position the guide. The glass will come out before final installation.
Insert the **Stationary Glass (2)** into the installed **U-Channel (1)** and **threshold**.
Use Caution not to bang the glass into the u-channel or threshold.

See Fig 16 for details

- 15.** Make sure that your **Stationary glass (2)** is parallel to the front edge of the threshold and mark it.
Slide the **Guide Block (12)** and align flush with the edge of the glass. Mark its position on the threshold and also mark the hole for drilling using a pencil (or center punch).

- 17.** Remove the **Stationary Glass (#02)** from the **U-Channel (#01)** and carefully set it aside while you drill and fix **Guide Block (12)**.

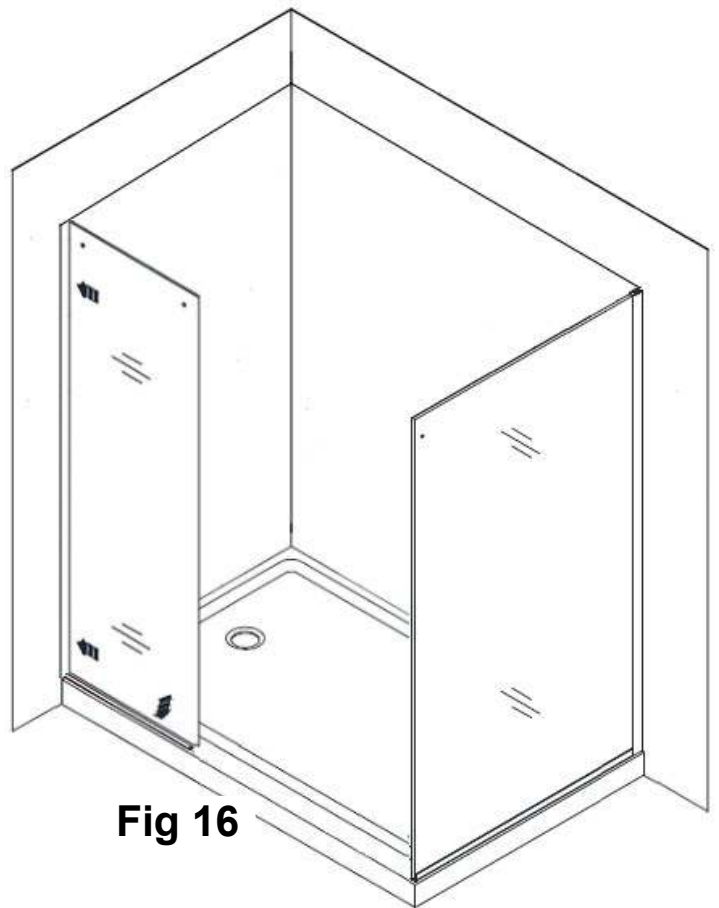


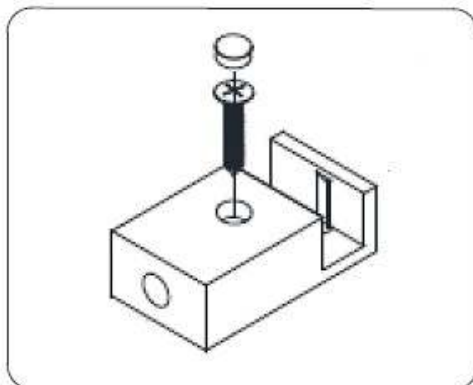
Fig 16

- 18.** To install the **Guide Block (12)**: Apply silicone to the underside of the **Guide Block (12)** and screw the **Guide Block (12)** to the threshold as Described below:

***NOTE:**

For installation into an acrylic threshold drill an **Ø1/8" (3mm)** hole and use the **ST4.2 x 25mm Round Head screw (18)**

Note: For bath installations: the **Guide Block (12)** must be screwed down to the bath deck.



Part#12 - Guide Block (with caps)

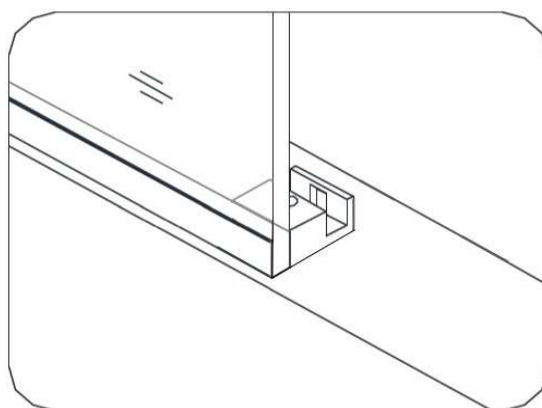


Fig 17

*** See notes on bottom of page 9**

Note:

Place the door glass against the back wall of the shower. Protect shower with cloth at bottom and top

- 19.** Apply silicone into the **U-Channel (1)** and the bottom **U-Channel (9)** or **Threshold** then Slide the **Stationary Glass (2)** firmly into the installed **U-Channel (1)** and the **bottom U- Channel (9)**

Use Caution not to bang the glass into the u-channel or threshold.

See Fig 18 for details

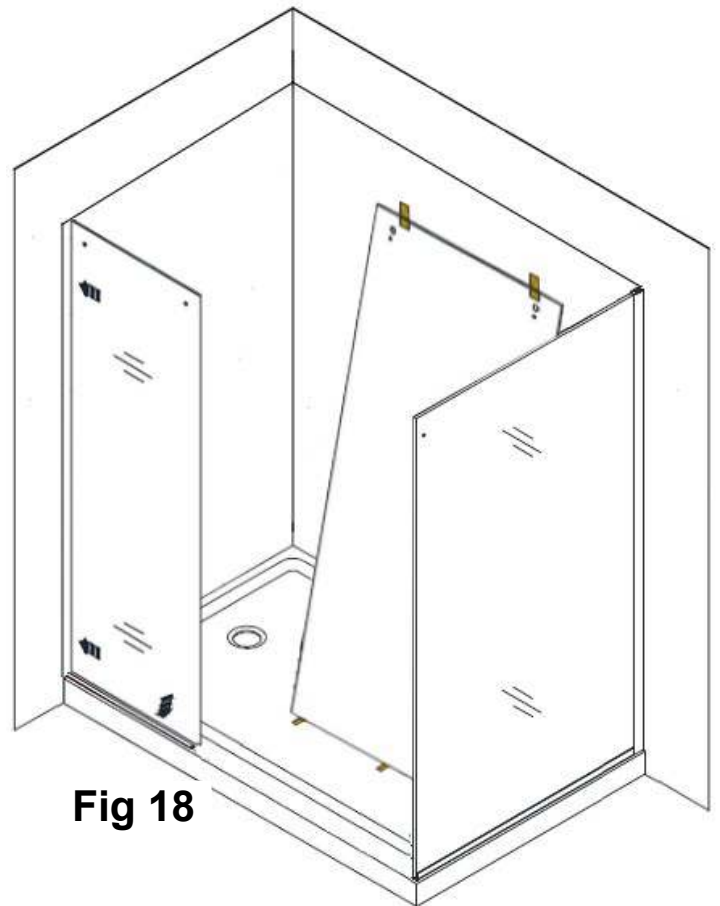


Fig 18

Installing Door - rails

20. Attach the **Stoppers (5)** and **Guide Rail Brackets (6)** to both ends of the **Guide Rail (4)**.

(Notice that the top of the guide rail bracket has two set screws)

Place Stoppers (5) with the rubber buffer to the top as shown.

NOTE: Be careful not to scratch the guide rail with the brackets and stoppers. Loosen the set screws before installation.

21. Align the panel side **Guide Rail (4)** with the installed **Guide Rail Wall Bracket (6a)**. Then slide the **Guide Rail Bracket (6b)** over the **Guide Rail Wall Bracket (6a)** and tighten the set screws.

See Fig 19 for details

22. Attach the **Stationary Glass (2)** to the **Guide Rail (4)** using the **Glass Brackets (7)**.

See Fig 20 for details

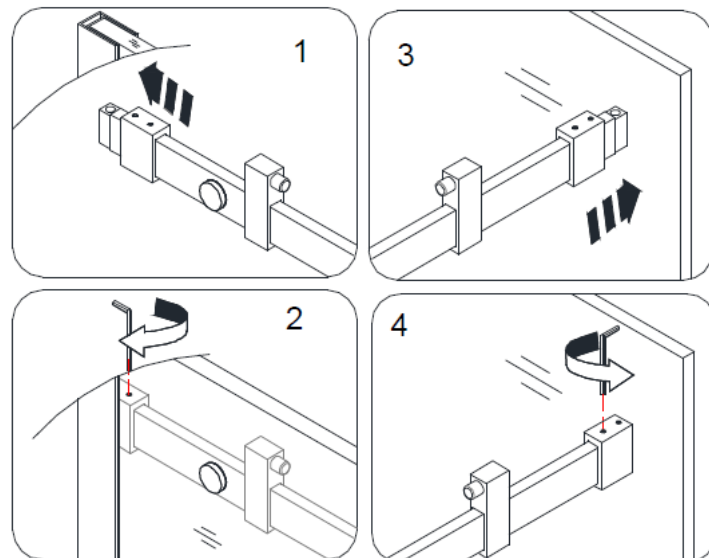
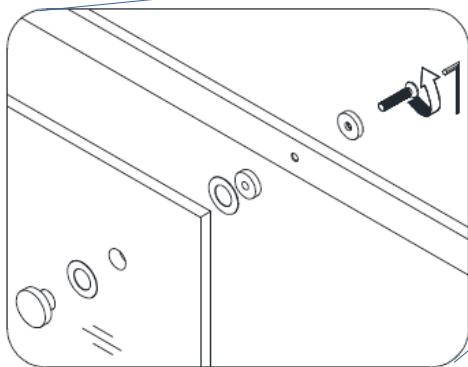


Fig19

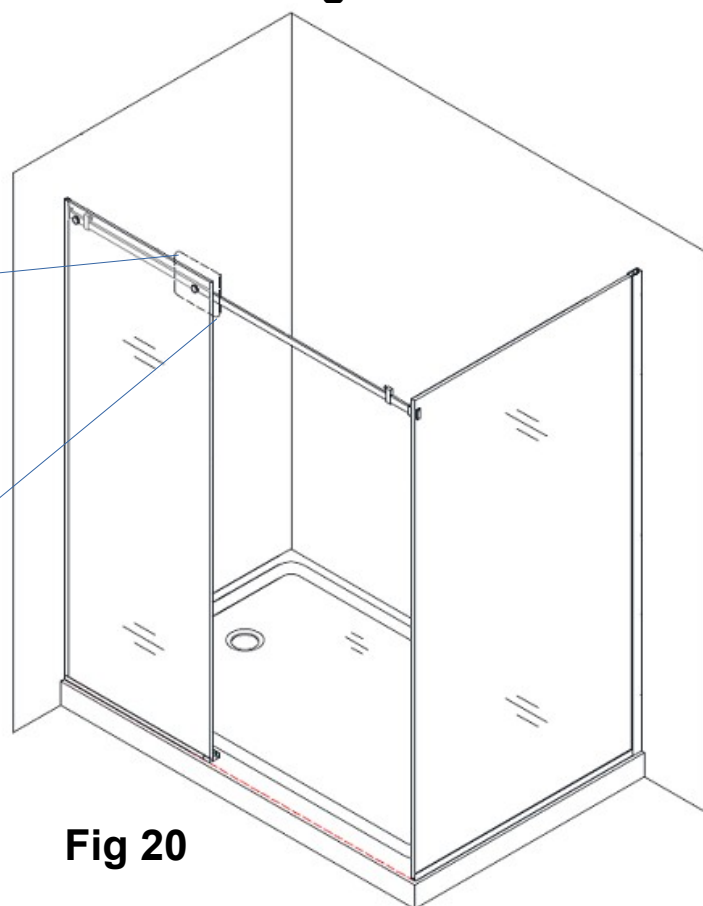


Fig 20

23. Level the **Guide Rail (4)** across the opening. If necessary, use the set screws on the **Guide Rail Bracket (6)** to adjust the level of the **Guide Rail (4)**.

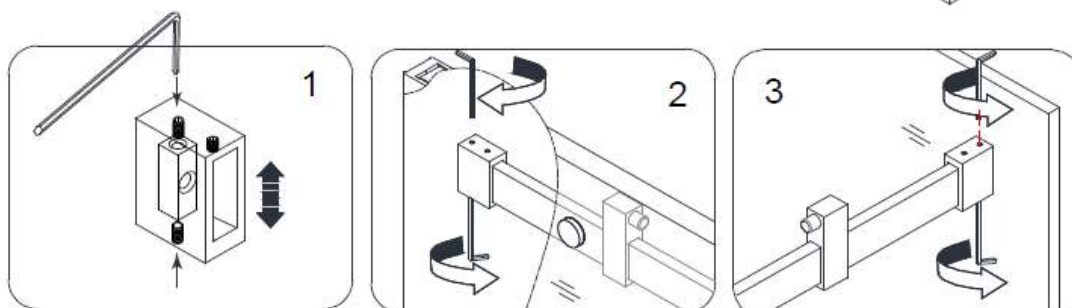


Fig 21

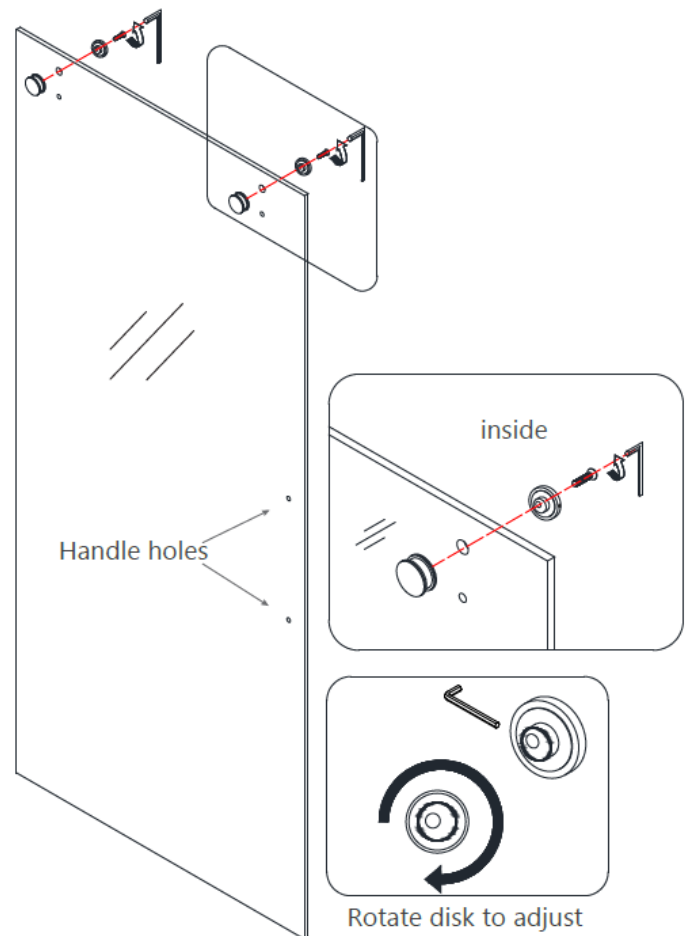
Installing Door – to rails

24. Attach the **Rollers (8)** to the **Door Glass (3)** with the wheels facing out.

NOTE: The roller hardware disk can be rotated to tilt the door glass slightly to create a tight seal with the wall. Make any adjustments after all of the vinyl seals are installed.

See Fig 22 for details

NOTE: DO NOT install the handle onto the door glass until instructed to do so.
DO NOT attempt to lift the glass using the handle. This could result in damage to the glass and/or serious personal injury.
Always use an assistant and or a professional grade glass suction cup when handling heavy glass.



Right hand door installation shown as example

Fig 22

25. Align the **Door Glass (3)** with the **Guide Block (12)** and hang the door from the **Guide Rail (4)**. Adjust **Door Stopper (5)** to stop class hitting wall or **return panel (20)** prematurely.

26. Install the lower **Rollers (8)** onto the **Door Glass (3)** beneath the **Guide Rail (4)**. Use a small allen wrench to hold the **Rollers (8)** so that there is approximately 1mm of clearance between the lower **Rollers (8)** and the **Guide Rail (4)**.

27. Attach the **Handle (15)** to the **Door Glass (3)**. Attach the **Anti-water strips (13)** to the edge of the **Stationary panel glass (2)** and **Door glass (3)**. Attach the **Bumper seal strip (14)** to the handle side of the door glass.

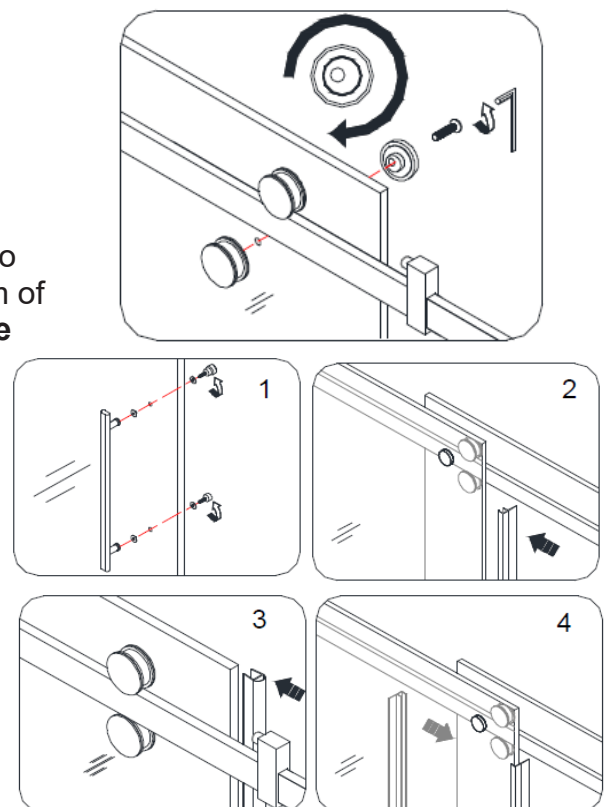


Fig 23

28. After final adjustment is complete, drill holes on each end through the predrilled holes in the **Wall profile (21)** into the first layer of the aluminum profile on the **Stationary glass (20)** using **Ø3mm** drill bit. Use **2 Round head screws ST4.2×10 (25)** with the raised washers to secure the aluminum profile on the **Stationary glass** inside the **Wall profile**. Cover the exposed screw heads with **Decorative caps (26)**.

See Fig 24 for details

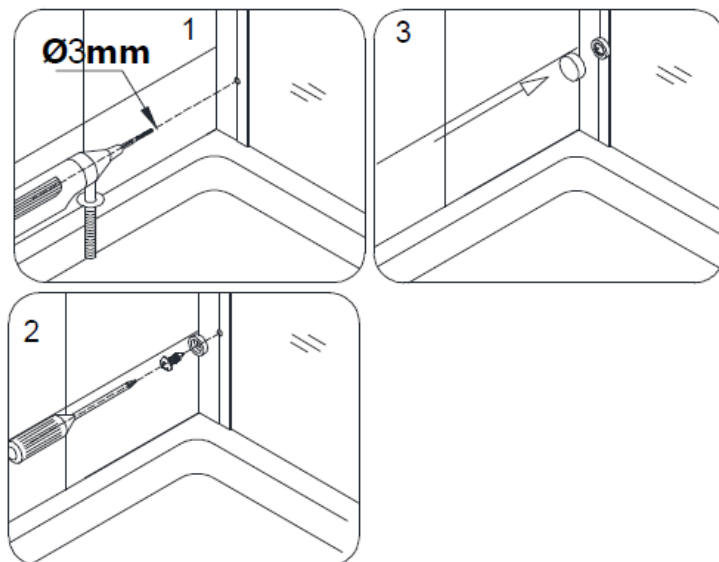


Fig 24

Sealing the Shower

29. Apply good quality mildew-resistant silicone along the connection of the stationary glass with the walls and the threshold.

Allow 24 hours for the silicone to fully cure before using the shower.

See Fig 25 for details

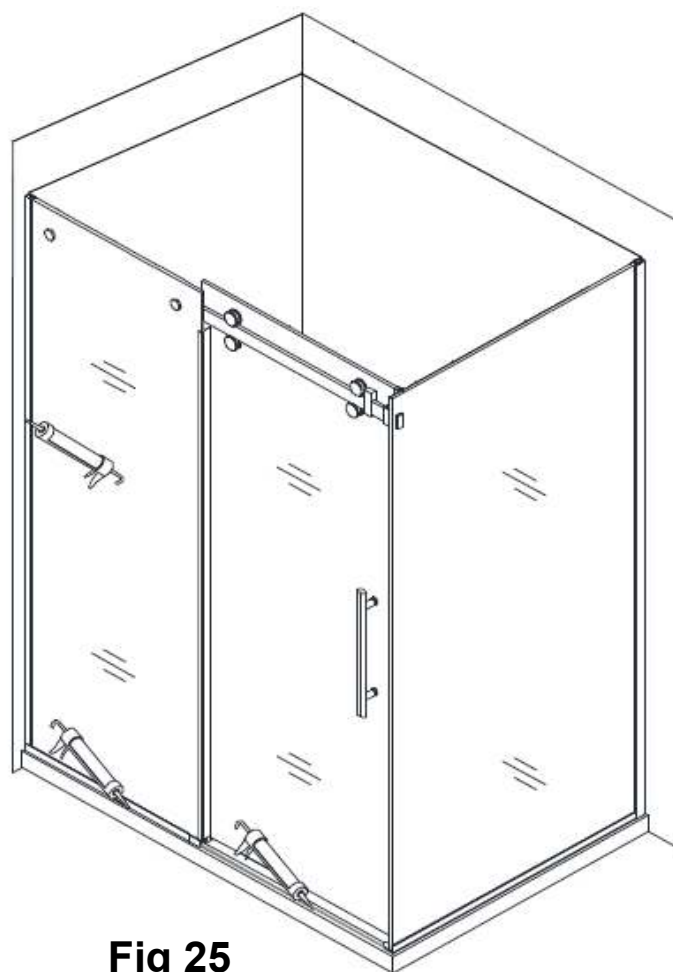
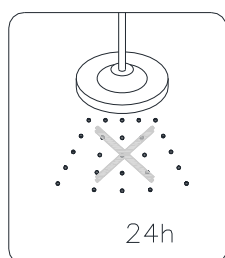
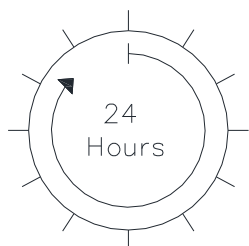


Fig 25

Product Maintenance

Urban Bath Shower door

Rinse and use only a soft cloth or squeegee on the glass surfaces.

Clean to a sparkling finish with any glass cleaner

Never use petroleum. Ammonia, bleach, acid or lemon based cleaners on any part of the shower.

Never use abrasive cleansers, metal brushes or scrapers, that could scratch or dull the surface of the acrylic liner, glass or any stainless parts.



5 Smales Road, East Tamaki,
Auckland
Ph: 09 913 3110 Fax: 09 913 3113

Auckland
www.henrybrooks.co.nz