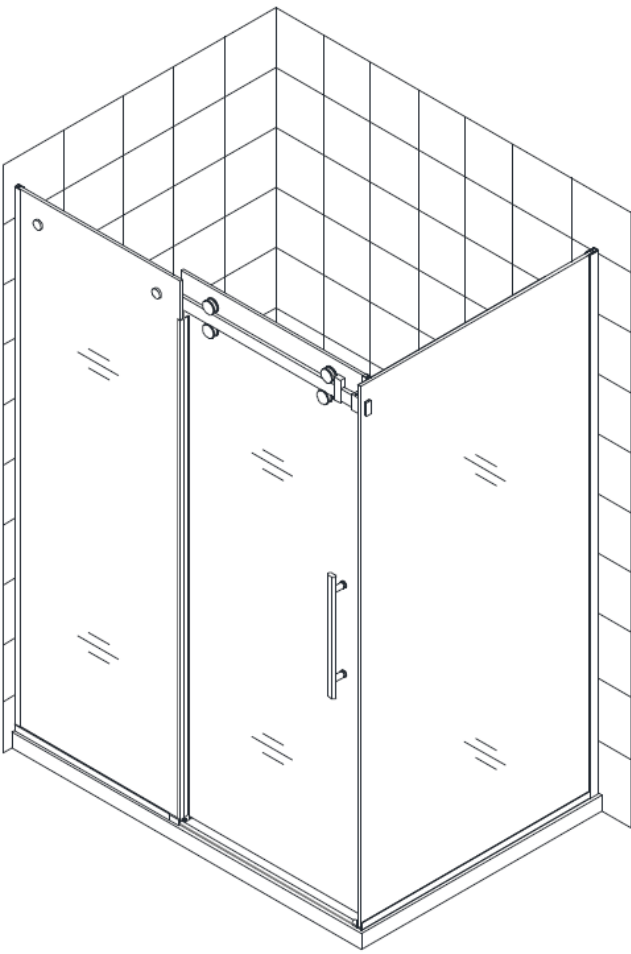




## Urban Shower Door Install Instructions

### Installation Guide (Rectangle Rail Soft Close)



**Thank you for your order**



Ph: 09-9133110  
5 Smales Road. East Tamaki  
Auckland  
[sales@henrybrooks.co.nz](mailto:sales@henrybrooks.co.nz)

[www.henrybrooks.co.nz](http://www.henrybrooks.co.nz)

# Urban Shower Door

## Preparation

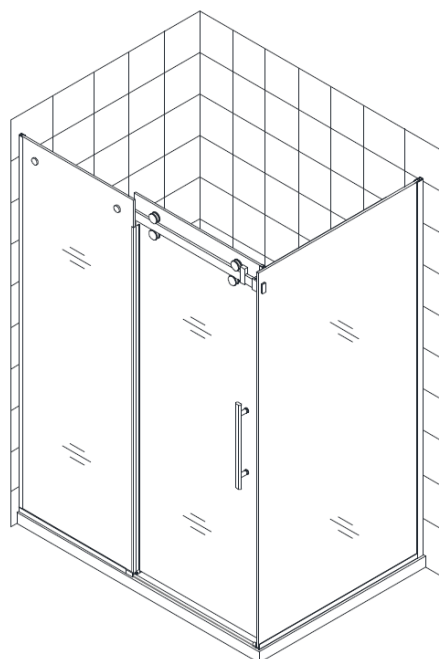
1. After opening all boxes and packages, read this introduction carefully. Check that all of the needed parts are included in the package, by marking all the components on the detailed diagram of the shower enclosure. Examine for any shipping damage. If the unit has been damaged, or has a manufacturing fault, or has missing parts, please contact our customer service department within five days of the delivery date.
4. This door can be fitted to
  - A. Urban acrylic shower tray
  - B. Tiled shower threshold / plinth which requires a minimum width of 80mm of installation space.
  - C. Flat floor

2. You must have all the correct plumbing and drainage components installed before you start to install the shower doors.

3. Please ensure prior to installation, that the installation surface is true and level, and robust enough to support the total weight of the shower unit. Also make sure the walls are true and plumb.

**NOTE: Some adjustments and drilling might be necessary during the installation process.**

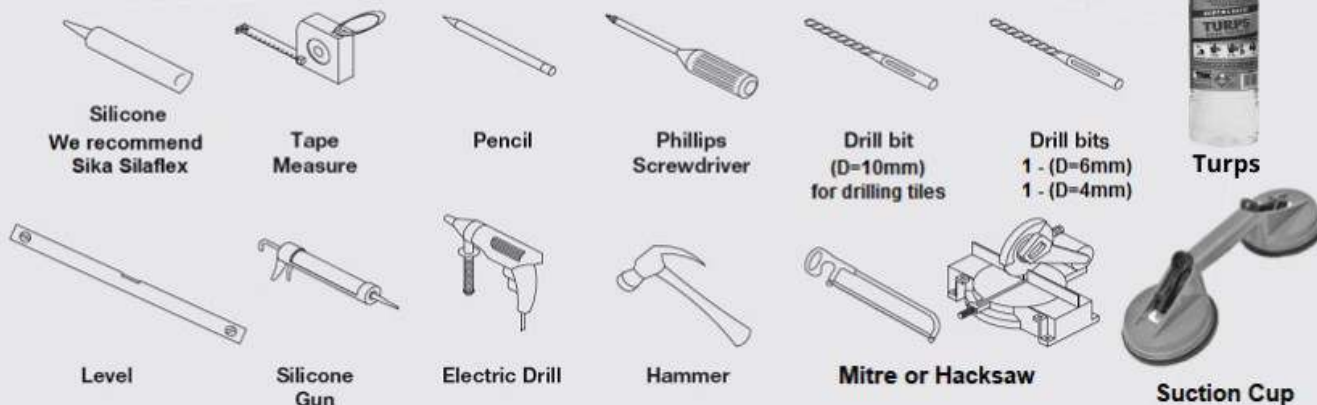
**NOTE: We strongly recommend installing the door guide fixing bracket (9) to the studs or preferably pre-install 90x45mm or 140x45mm wood behind the linings to take the brackets rather than using wall anchors.**



We recommend placing a drop cloth or protective cardboard into the base of the tiled shower or acrylic shower tray to prevent damage caused by footwear or dropped tools.

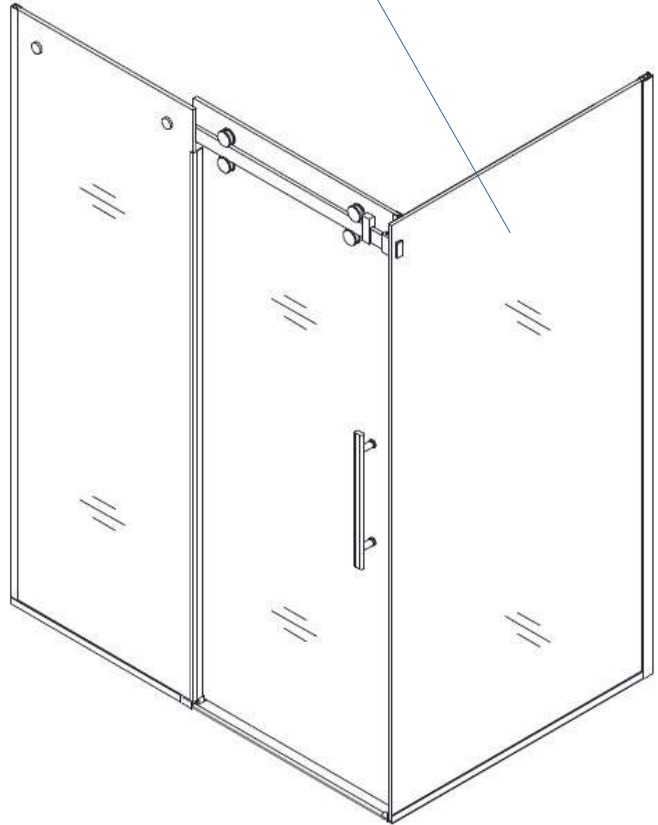
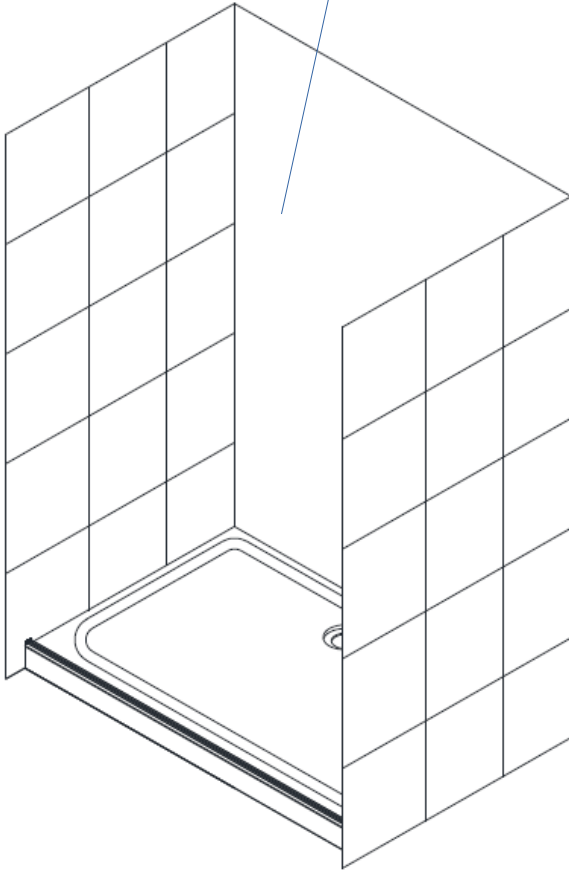
**The order of installation described in the following pages is important.  
Please follow these instructions carefully**

## Tools Required



## Instructions cover these models

These instructions are suitable for a shower door installation for **Alcove (without a return)** and **Corner (with Return end panel)** installs.  
Both Left Hand and Right Hand installations

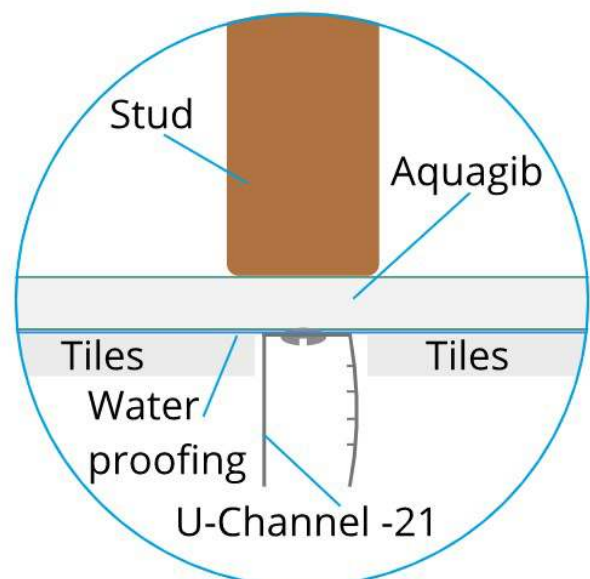


**Our product may have changes without prior notice**

### Installing Door Return to Tile Walls

This tip is for the fixing of the Return Panel only in a 2 walled corner installation, if you have a 3 wall install this is not required.

Install your Shower Tray and waterproofing as usual. Once the waterproofing is dry (before you lay your tiles) fix the **Wall U-channel – aluminium (21)** directly to your waterproofing following instructions on Page 7 & 8.

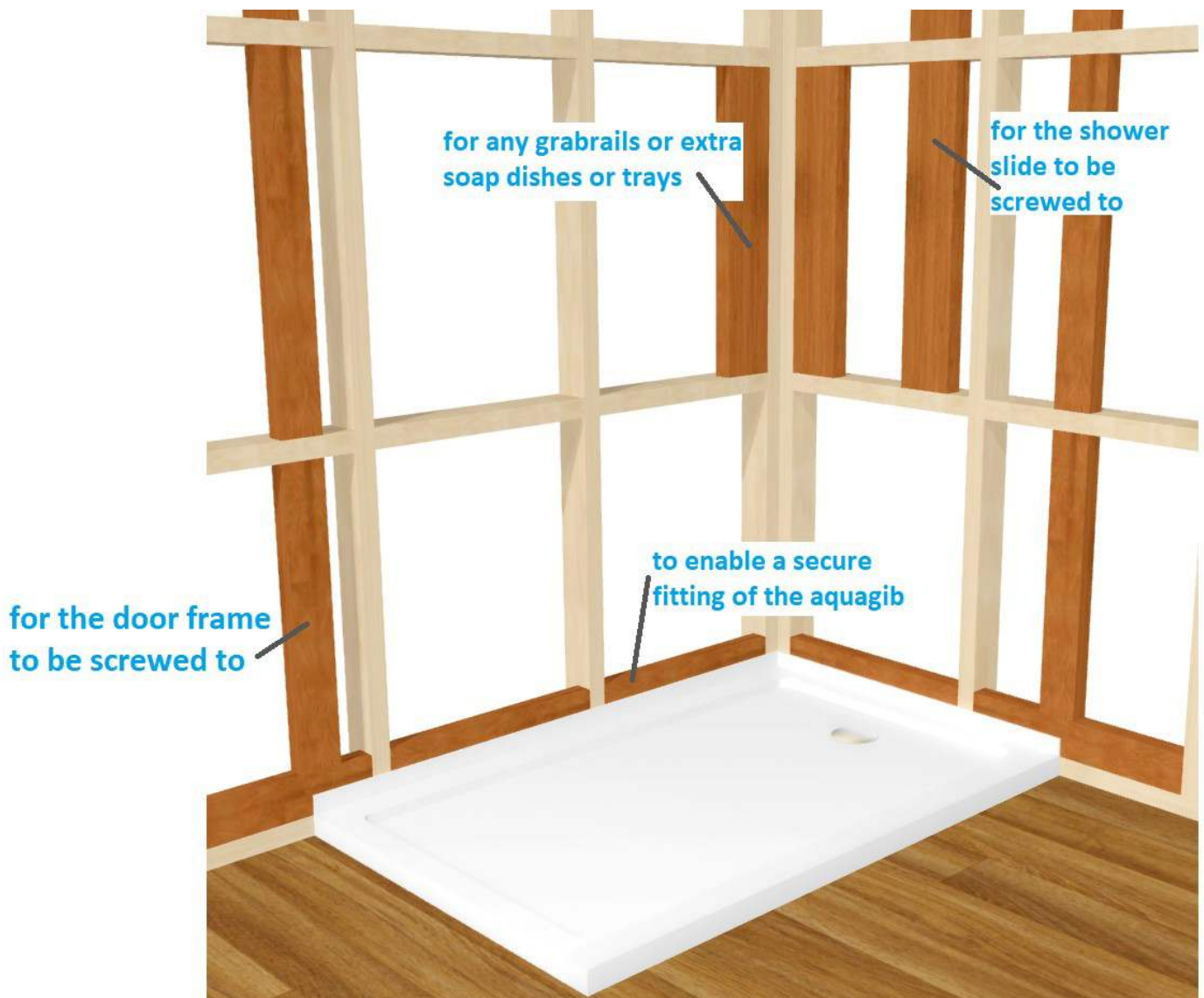


Tiles installed after U-Channel

To ensure a stable shower door installation we recommend installing extra framework where your shower door contacts the wall as shown in the image below.

With the shower tray in place determine the position of any extra framing.  
See separate tray and liner instructions, go to link below  
<https://www.henrybrooks.co.nz/installation-instructions/>

In this image the Std framing is lighter in colour and the extra recommended framing is in the darker colour.



For further info on Shower tray preparation and install  
Click on (or copy and paste into a browser)  
<https://www.youtube.com/watch?v=K38V9-wUvHg>



You should consult your local building codes on questions on installation compliance standards.  
Building and plumbing codes vary by location, and our local dealers or distributors are not responsible for code compliance standards for your project.

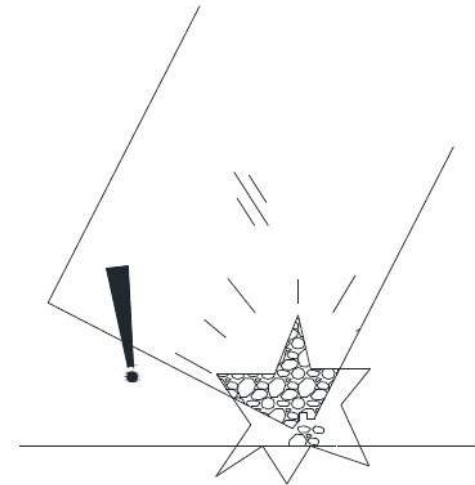
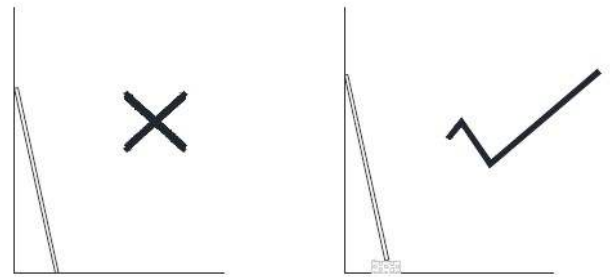
**Supplied Wall anchors are for use on concrete walls and are NOT required for standard timber stud construction installations where appropriate wood has been fitted.**

#### **Please Note**

The glass panels are tempered Safety Glass to the NZ/AS 2208.1996 safety standards.

When leaning them against a wall always protect the bottom edges and do not knock a corner against a hard surface as the glass panel may shatter.

### **Caution!**

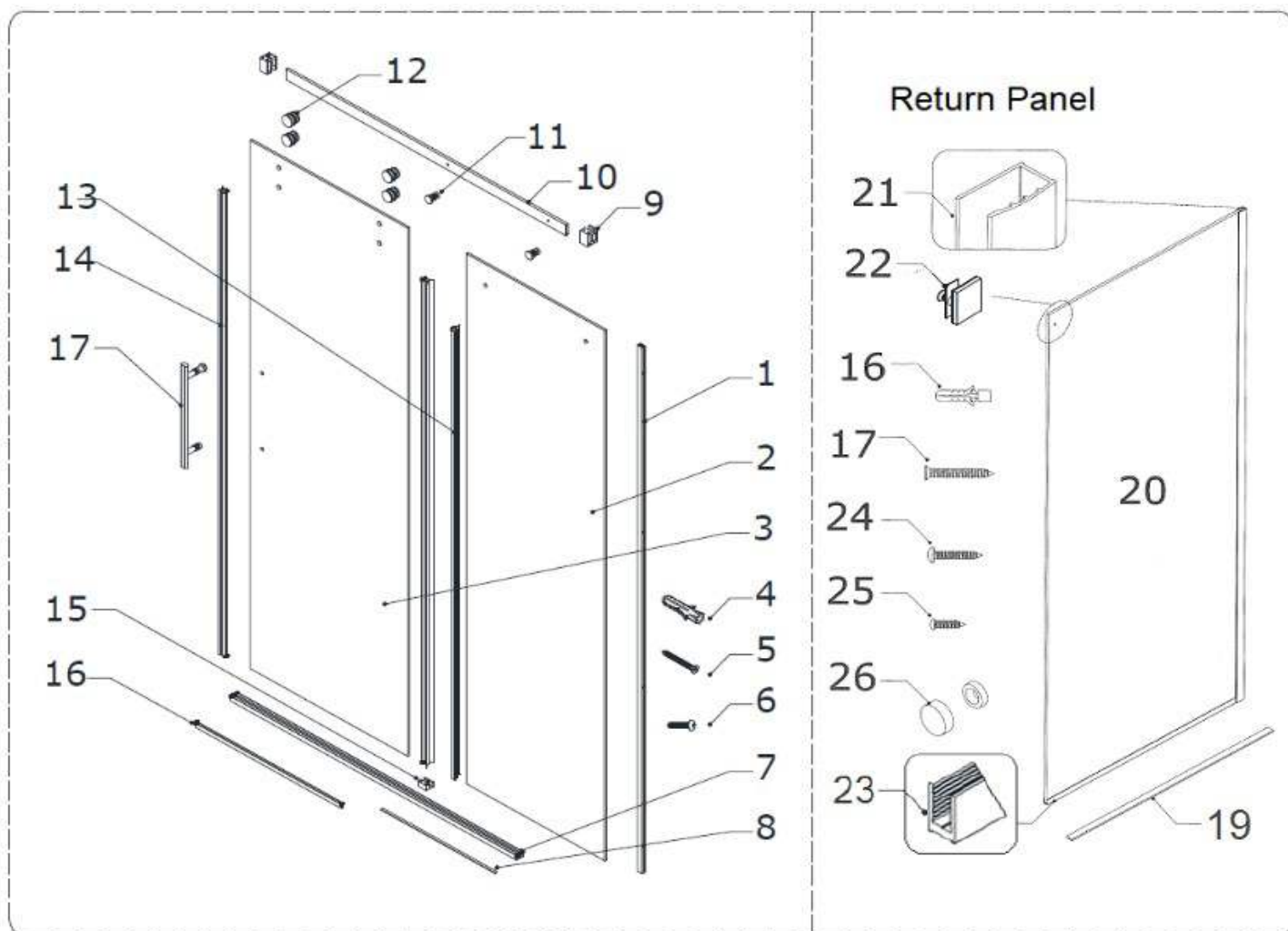


**These instructions assume that your plumbing, shower tray and wall linings are already installed level, plumb and square.**

## **Installation Sequence**

- 1<sup>st</sup> Install the Return Panel (if required)
- 2<sup>nd</sup> Install the Fixed Glass Panel of the Door Set
- 3<sup>rd</sup> Fit the Sliding door Set

# Shower Enclosure Components



## Door Parts

1	U-channel	1pcs	10	Guide Rail	1pc
2	Stationary glass	1pc	11	Guide Rail to Glass assembly	2pc
3	Door Glass	1pc	12	Roller	4pc
4	Wall anchor 8mm	1pcs	13	water seal strip - vertical	2pc
5	Countersunk screw ST4.2x35	2pcs	14	Bumper strip	1pcs
6	Pan head screw	2pcs	15	Guide block	1pcs
7	Threshold	1pcs	16	Threshold cover	10pc
8	1mm Bottom Gasket	1pcs	17	Handle	10pc
9	Guide Rail Fixing Bracket	2pc			

## Return Panel Parts

19	1mm Bottom Gasket	1pc	23	Bottom U-channel	1pc
20	Glass Return Panel	1pc	24	Big head screw ST4.2x40	4pcs
21	Wall U-channel - aluminium	1pc	25	Round head screw ST4.2x10	4pcs
22	Stationary Glass Connector	1pc	26	Decorative caps	4pcs

**NOTE:** Unpack your unit carefully and inspect it. Lay it out and identify all parts using the detailed diagram and packing list in this manual as a reference. Before discarding the carton, check for small hardware bags that may fall to the bottom of the box. If any parts are damaged or missing, please contact **Henry Brooks & CO LTD** for replacements.

**Items 19 - 26 are only included when return panel ordered**

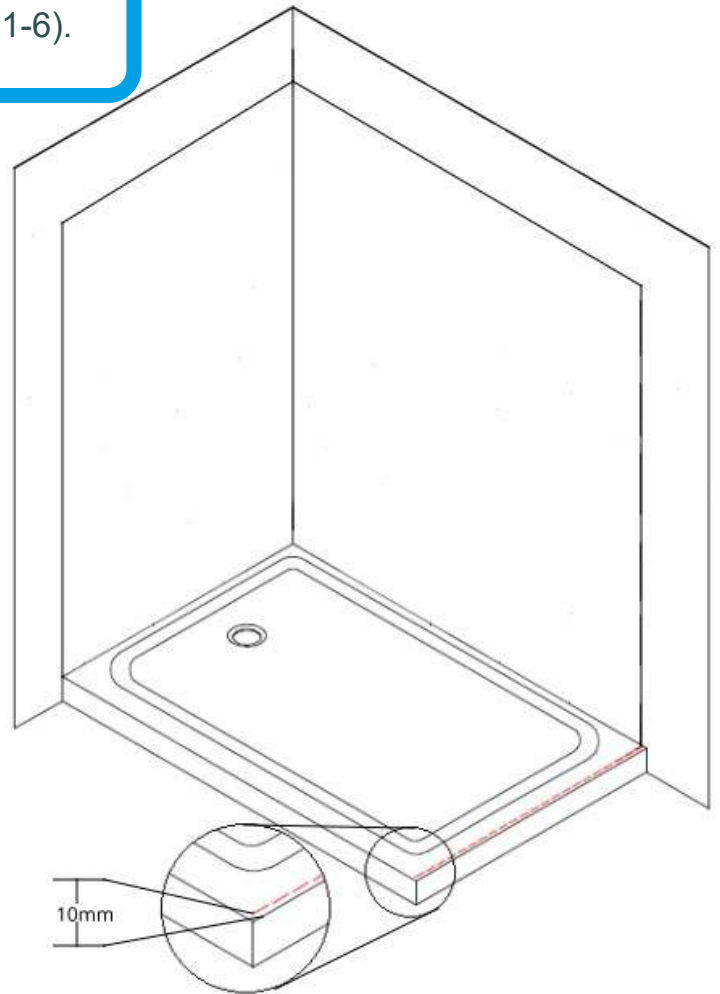
**Please Note** If you are installing the door to an Alcove (3 walled) shower you can ignore the instructions for the return panel (steps 1-6).  
Go to **Step 7** to start.

**NOTES:**

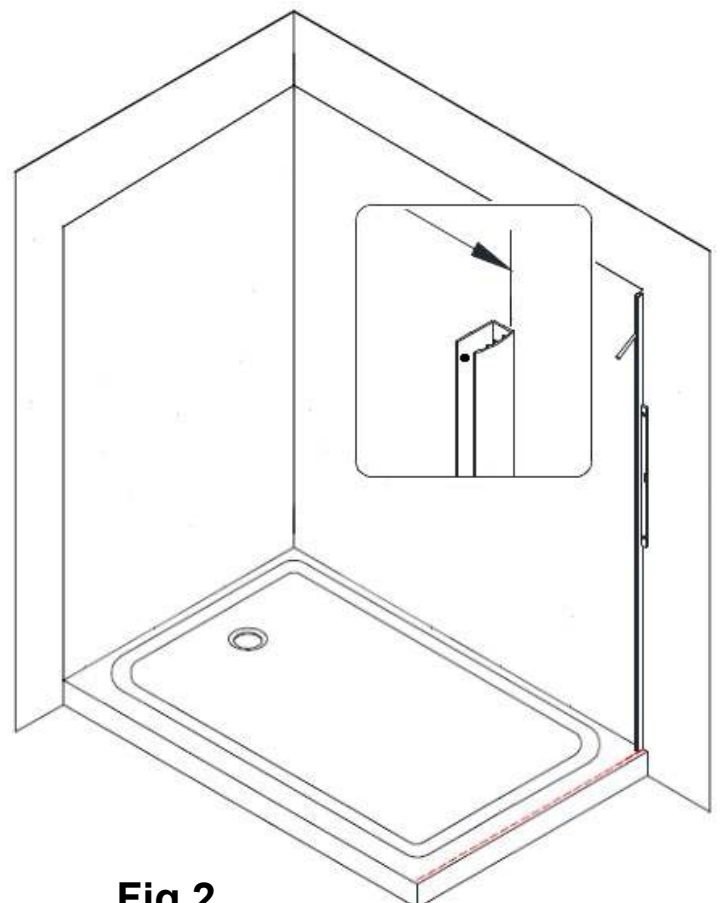
Ensure all extrusions are plumb and parallel to the edges of the shower tray and liner.

Silicone must be applied to the back of each of these extrusions before fixing to shower liner - see step 3.

1. Mark 8-10mm in from the outside edge of the tray as shown and extend your pencil line vertically onto the wall lining.



2. Place the **Wall profile (21)** to the wall onto the shower base or tub and level it vertically. Align the edge of the **Wall profile (21)** to the inside of the pencil mark on the wall lining ensuring the pre-drilled holes face into the shower.



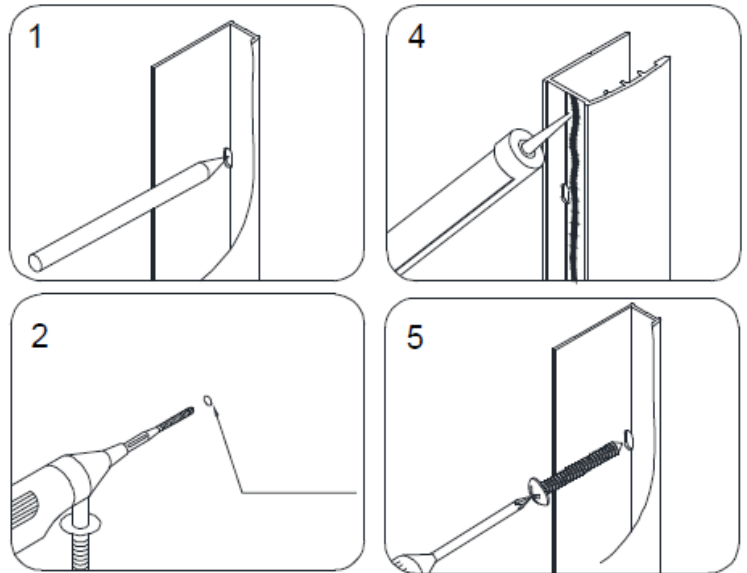
**Fig 2**

3. Mark the holes on the wall through the holes in the **Wall profile (21)**.  
Place the **Wall profile** aside, drill the holes using 3mm drill bit.  
Apply silicone along the wall profile and around the holes on the wall.  
Place the **Wall profile (21)** back into the designated position and secure it to the wall using 4 of the **Big head screws ST4.2×40 (24)**.

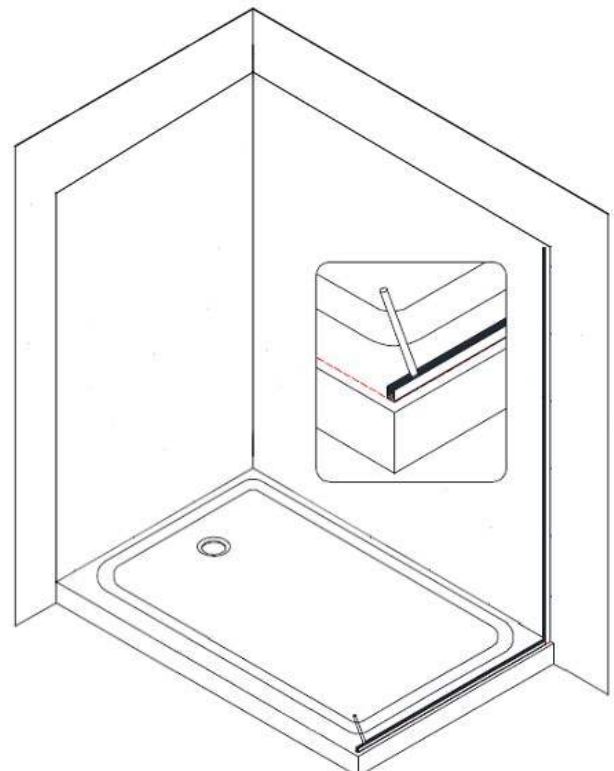
4. Place the bottom **U-Channel (23)** onto the tray **8mm in from the front of the tray**, (there will be a gap at the back, the U-channel on the Glass goes behind) align the edge to the inside of the marked line, and mark the drill holes on the tray through the holes in the bottom **U-Channel (23)**. \*

Remove the **U-Channel (23)** from the tray and drill the anchor holes using a **Ø3mm** drill bit. \*

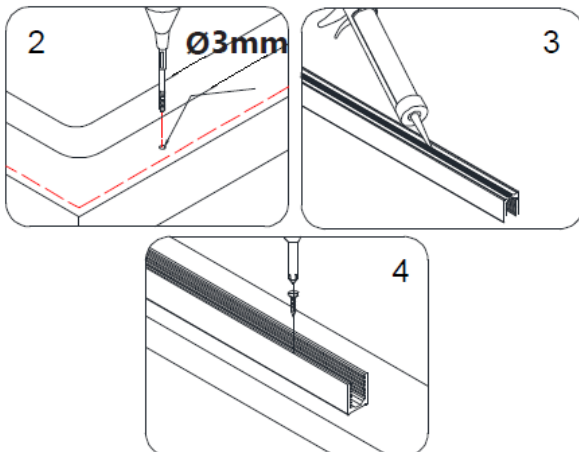
Add a bead of silicone to the back of the **U-Channel (23)** and attach it to the tray using four of the **ST4.2 x 40 Round head screws (25)**.



**Fig 3**



**Fig 4**



**Fig 5**



These instructions show drilling through the bottom of the U-channel and into the shower tray. However our **preferred method** is to silicone them in place (rather than drill holes into the shower base or floor) as it will reduce any likely hood of Leaks. This will take longer to install as you need to let the silicone cure before you continue.

If you choose to use only silicone continue till you complete **step 10** then let silicone set for 24 hours.

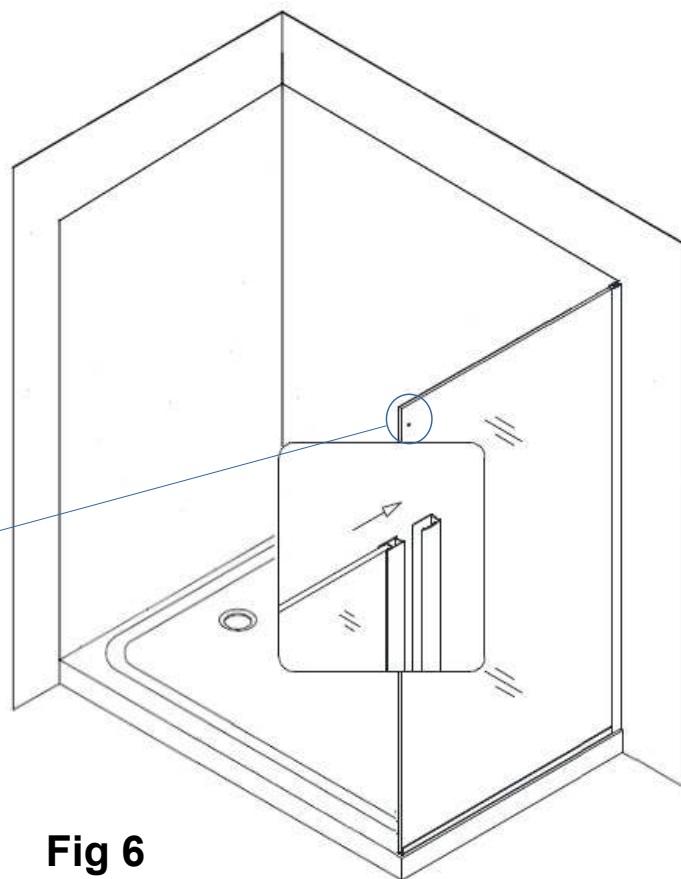


5. Place the 1mm Bottom Gasket (19) into the bottom U-channel (23) to provide a buffer cushion between screw heads and glass.

Apply a generous amount of clear translucent silicone into the profiles (21) and (23) then lift the **Return panel glass (20)** into the groove of the **Wall profile (21)** and lower down into the **bottom U-Channel (23)**.

Ensuring the hole in the glass is away from the wall.

Silicone will ooze out of the 'U'profiles. This can be cleaned up with mineral turpentine while it is still wet or cut off with a razor blade when dry

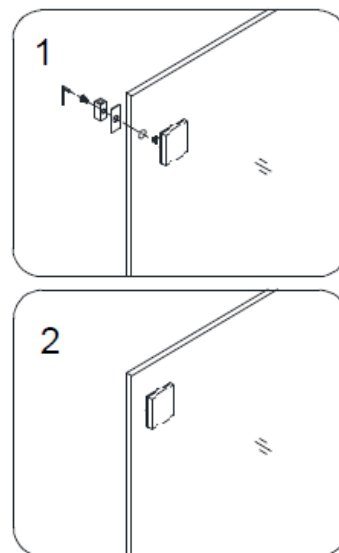


**Fig 6**

**Always use a professional grade glass suction cup when handling heavy glass.**

6. Attach the **Stationary Glass Connector (#22)** to the top of the **Return Panel Glass (#20)**.

**see Fig 7 for details**



**Fig 7**

# Installation Process

## Installing Threshold

7. Measure the distance between two finished walls (**W**) or wall to return panel for your shower door.  
Then cut **threshold (7)** to the (**W**) length.

Align the edge of the **threshold (7)** so that the threshold edge is In-line with the front of the earlier installed return panel **or** 6mm inside the edge of the shower tray and parallel to the front edge of the tray.

8. Mark where you need to drill then remove **Threshold (7)** and drill the holes using a **3mm** drill bit (**or** clearance hole if tiles).

\* See notes on bottom of page 8

**Now** add a bead of silicone to the back of (**7**) then position and fix to tray using **ST4.2 x 40 Countersunk screws (5)**.

9. Align **U-channel (1)** groove with the threshold (**7**) groove.  
Use a level to plumb the **U-channel (1)** and mark the hole positions on the wall with pencil.

10. Remove the Vertical **U-Channel (1)** from the wall then drill holes using a 3mm drill bit.  
Add a bead of silicone to the back of (**1**) then position and fix to wall using **ST4.2 x 40 Countersunk screws (5)**.

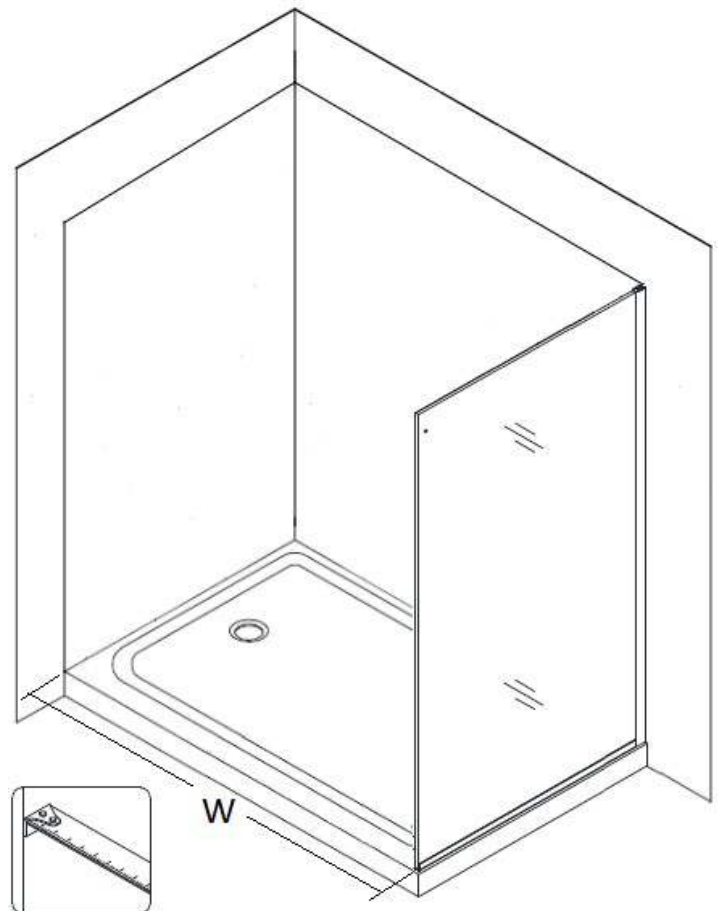


Fig 8

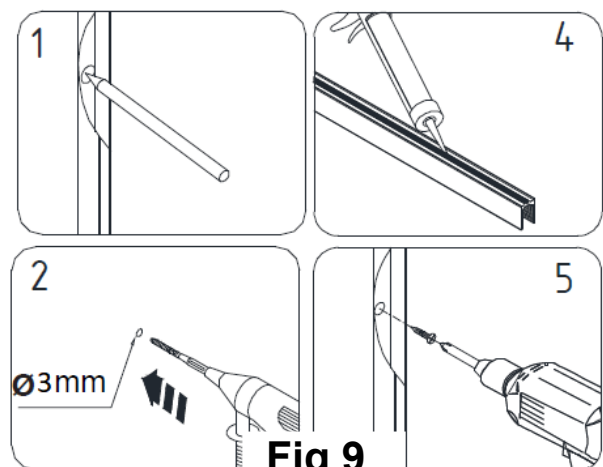


Fig 9

Once these extrusions are installed we recommend you leave them for 24 hours to cure before you continue if you've only used silicone. Please read notes on Page 8.

## Preparing the rail install

### 11. Cut the **Guide Rail (10)** to length.

It should be the same length as the **threshold (7)** if your walls are Parallel to each other but please check.

Measure the finished opening width at the Height where the **Guide Rail Bracket (9)** will be fitted.

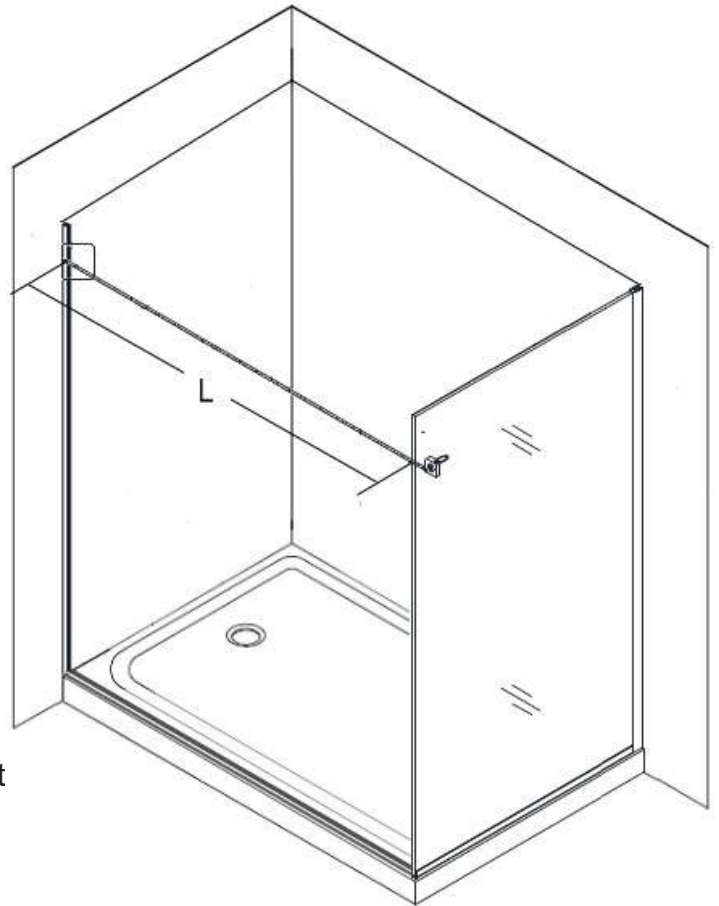
Wall to wall for an alcove installation or wall to Glass when the install has a return panel.

#### **Note:**

If you are installing with the return panel you will need to reduce your measurement by the width of the mounting block that is part of **(#22)** already mounted to the glass the Guide Rail Bracket (is 10mm wide)

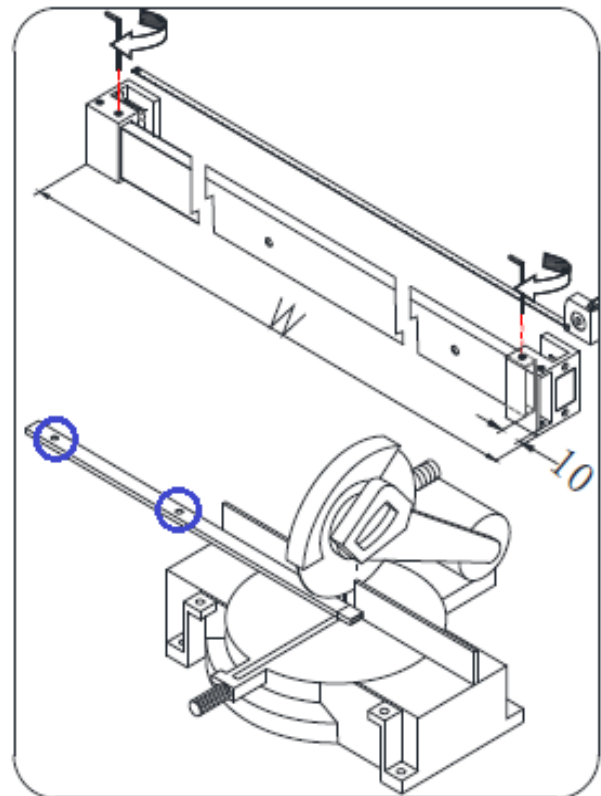
#### **Example only:**

If your measurement is 1889mm you should cut at 1879mm to allow for this block.



**Note: Cut ONLY from the door end - the opposite end to the holes**

Once cut use a metal file to remove any burrs from the cut end of the **Guide Rail (10)**.



**Fig 15**

## Installing Door Rails- continued

Now we are going to **DRY FIT** the Stationary Glass Panel

12. Place the Stationary Glass (2) Into position after making sure that 1mm Bottom Gasket (8) is in place covering the screws in the bottom of the threshold (7).



Note:

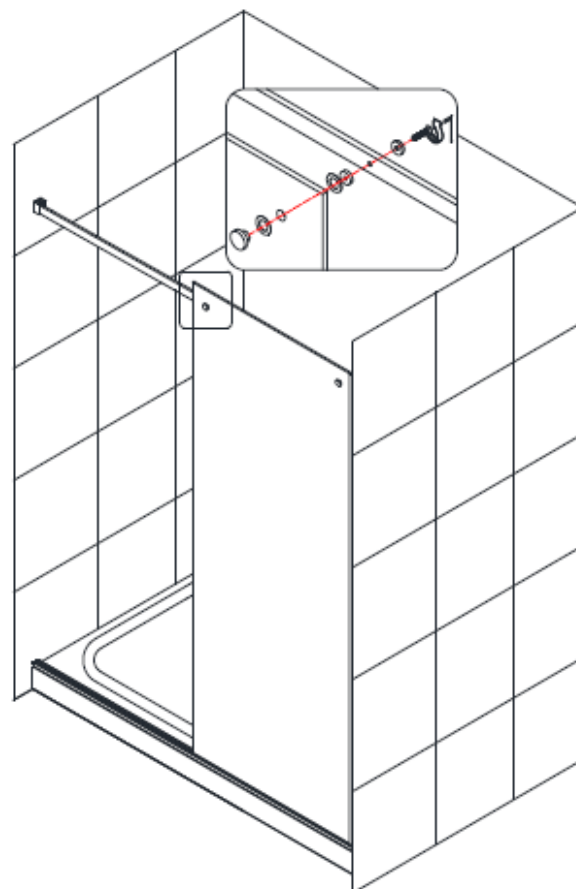
It is best to use a suction cup tool to hold the glass.

This is to enable you to position the Guide rail Bracket (9) and fix the height.

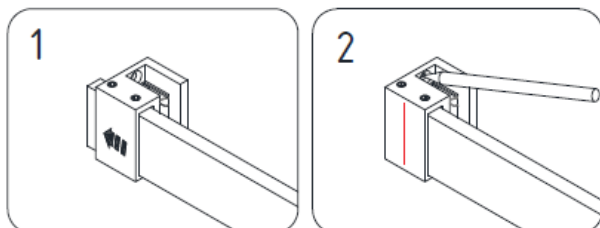
13. Slide the 2 Guide Rail Fixing Brackets (9) onto each end of the Guide Rail (10) temporarily tighten them on the rail away from the ends.

Then fit Guide Rail to Glass Assembly (11) to the Guide Rail (10).

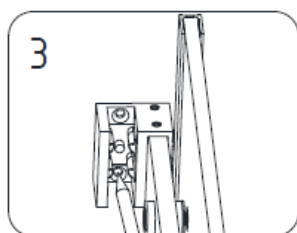
14. Fit the Guide Rail to Glass Assembly (11) through the glass Loosen the Guide Rail Fixing Brackets (9) and slide to wall. Place a level on Guide Rail (10), and use an allen key to adjust the screws on the Brackets (9) to get the Rail (10) level.



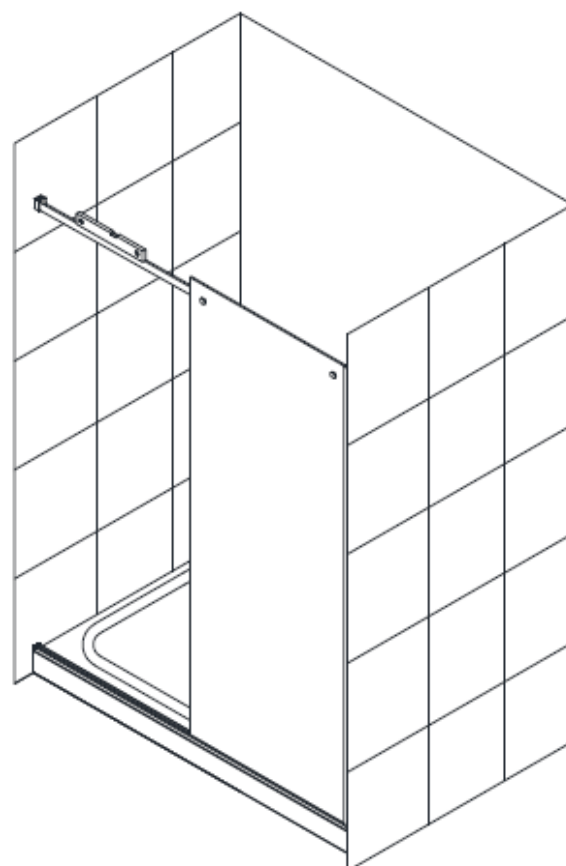
**Only once the Rail is fixed to the Glass  
slide the brackets to the wall**



**There will be a gap between the Rail  
and the Wall once the bracket is fixed in place**



Then mark your wall for drilling the fixing holes.



**Disassemble the Guide Rail (10) and the Stationary Glass (2) Drill holes and get ready to complete the install.**

## Installing Stationary Glass Panel

Now we are going to RE-INSTALL & SEAL the Stationary Glass Panel

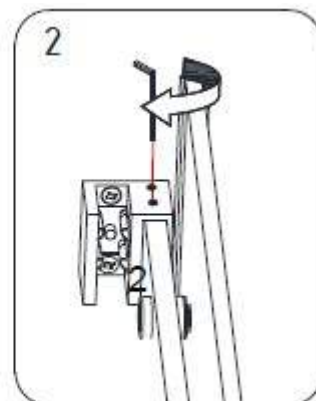
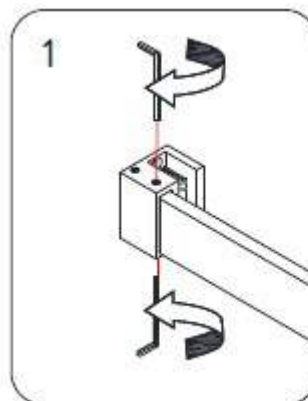
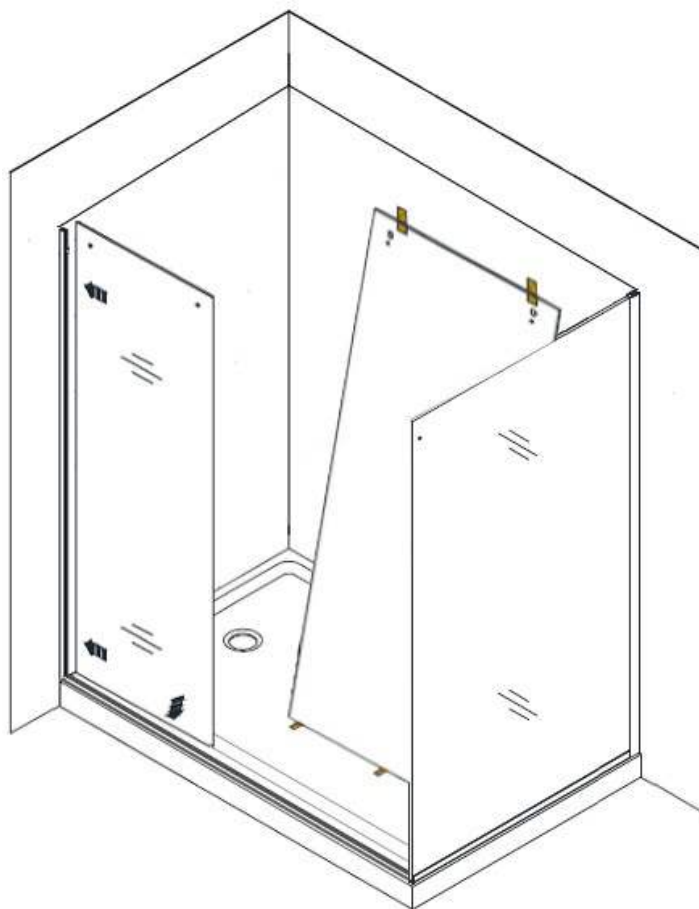
15. Put the **1mm Bottom Gasket (8)** into **Threshold (7)** groove close to the **U-channel (1)** side. Apply silicone into the groove of **U-Channel (1)** and **Threshold (7)**. Then insert **Stationary Glass (2)** into the **U-channel (1)** groove and lower it into the **Threshold (7)** groove.

See Fig. 16 for details.

### Note:

We recommend placing the Door Glass (3) against the back wall of the shower before installing the Stationary Glass Panel (2) as this makes the install of the Door Glass (3) easier.

Protect shower with cloth at bottom and top to stop any marking of wall or tray.



16. Now finalise the installation of the assembled **rail (10)** and parts **(9)** and **(11)** on to the glass and walls. And check that the **Rail (10)** is level by adjusting the allen keys as required



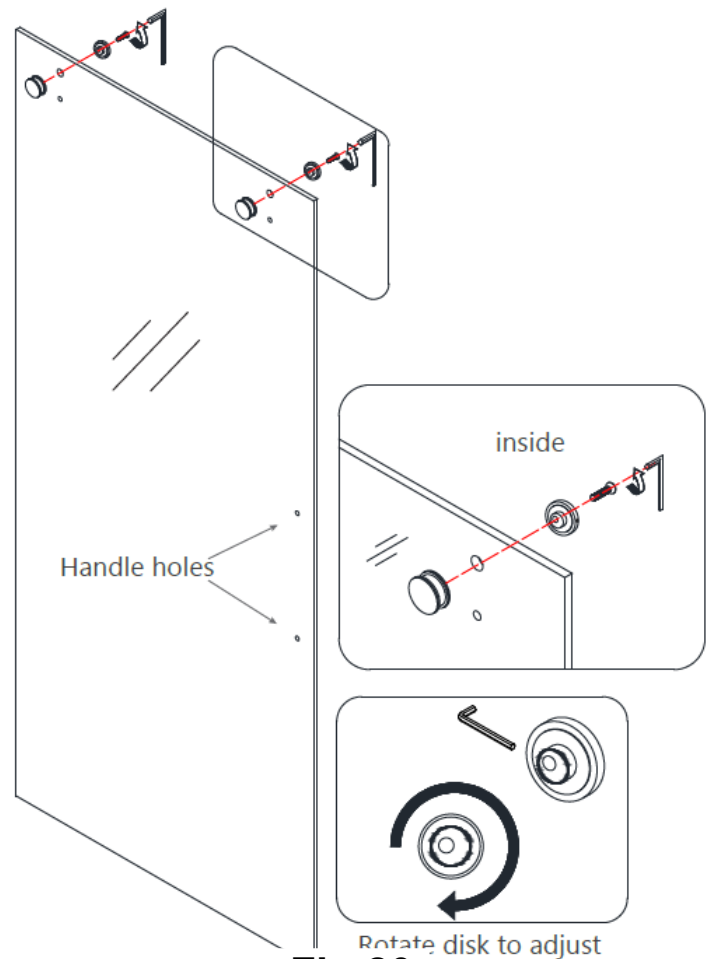
## Installing Door – to rails

17. Attach the **Top Rollers (12)** to the **Door Glass (3)** with the wheels facing out.

See Fig 20 for details

**NOTE:** The roller hardware disk can be rotated to tilt the door glass slightly to create a tight seal with the wall. Make any adjustments after all of the vinyl seals are installed.

**NOTE:** DO NOT install the handle onto the door glass until instructed to do so. DO NOT attempt to lift the glass using the handle. This could result in damage to the glass and/or serious personal injury. Always use an assistant and or a professional grade glass suction cup when handling heavy glass.



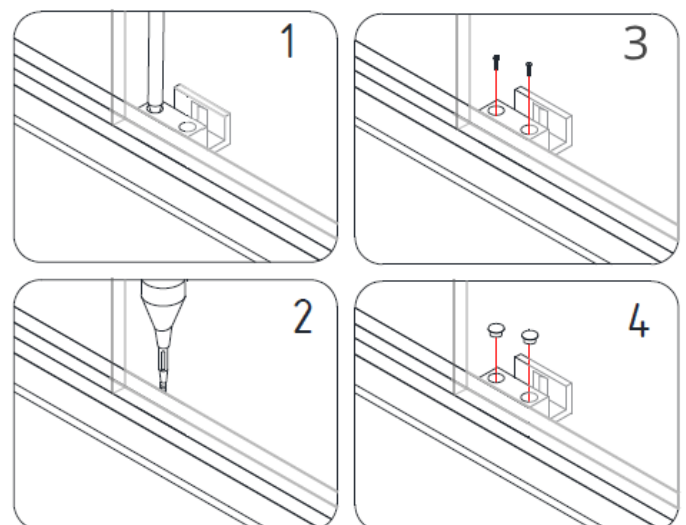
**Fig 20**  
Fig 20

### Installing Door Guide Block (15) on the bottom

18. Place the **Guide block (15)**, inline with the end of the **Stationary glass (2)** and up against **Threshold (7)**.

Hold (15) in this position and mark the tray or tiles For drilling. \* (refer back to page 8)

Then use 3mm drill bit to drill hole on shower base, fix the **Guide block (15)** by using **Countersunk screw ST4.2×35 (17)** or using **Silicone \*** (refer back to page 8).



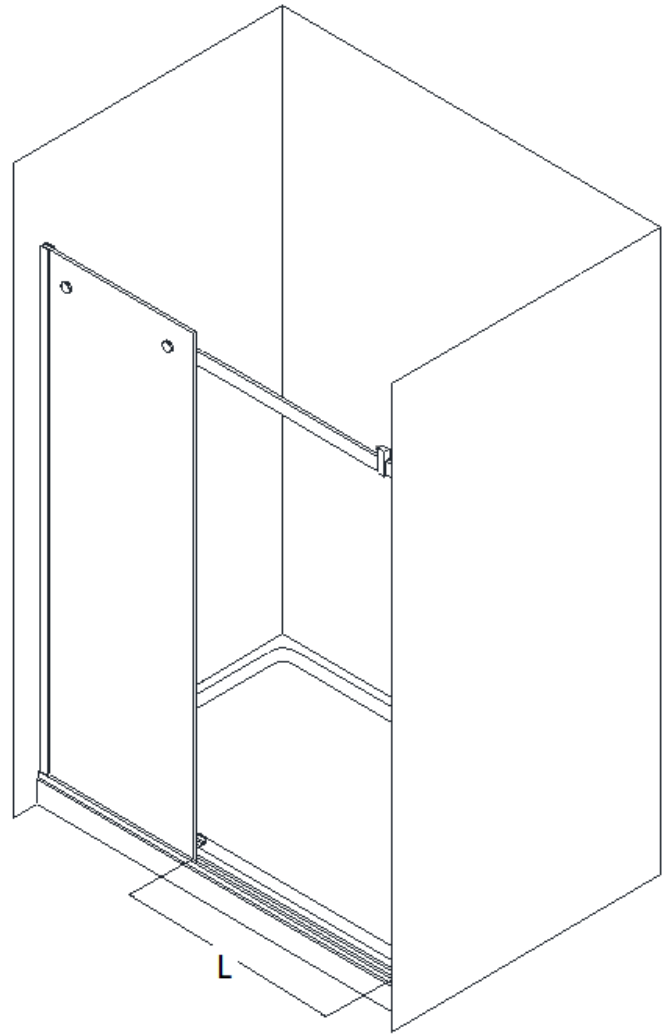
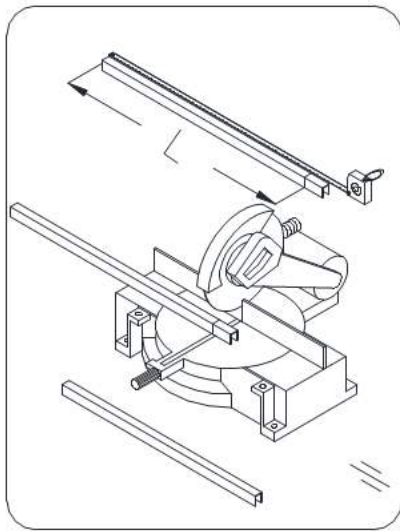
See fig 21 for details.

**Fig 21**

## Installing door – Threshold cover

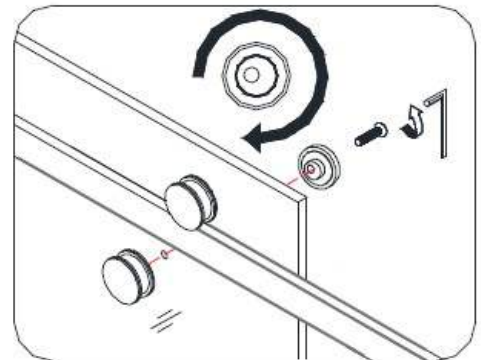
19. Measure the distance between the **Stationary Panel (2)** and the wall on its opposite side, use Mitre Saw or Hacksaw to cut the **Threshold Cover (16)** to that length.

Insert the **Threshold Cover (16)** into the **Threshold (7) channel**. Onto 2 thin beads of silicone.

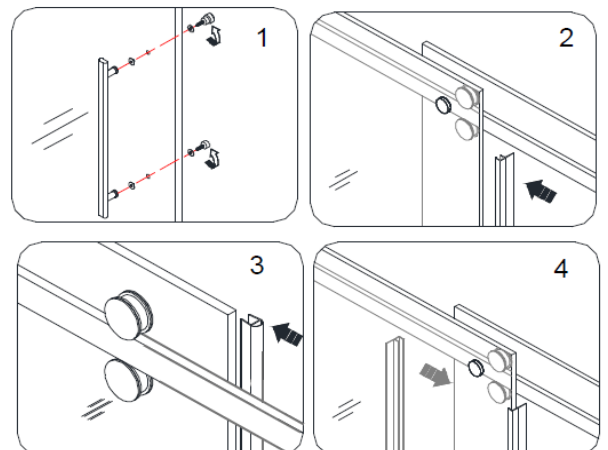


20. Align the **Door Glass (3)** with the **Guide Block (15)** and hang the door from the **Guide Rail (10)**.

21. Install the lower **Rollers (12)** onto the **Door Glass (3)** beneath the **Guide Rail (10)**. Use a small allen wrench to hold the **Rollers (12)** so that there is approximately 1mm of clearance between the lower **Rollers (12)** and the **Guide Rail (10)**.



22. Attach the **Handle (15)** to the **Door Glass (3)**. Attach the **water seal strips (13)** to the edge of the **Stationary Glass Panel (2)** and **Door glass (3)**. Attach the **Bumper Strip (14)** to the handle side of the door glass.

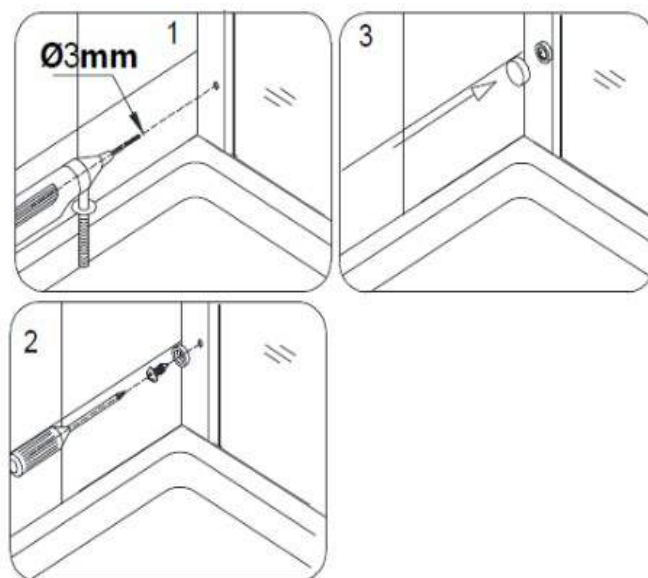


**If required additional fixing for Return Panel can be used to fix the 2 wall profiles together using fixing screws (#25)**

**Note Avoid drilling into the Glass**

**23. After final adjustment is complete, drill holes on each end through the pre-drilled holes in the **Wall profile (21)** into the first layer of the aluminium profile on the **Stationary glass (20)** using **Ø3mm** drill bit.**

**Use 2 Round head screws ST4.2×10 (25) with the raised washers to secure the aluminium profile on the **Stationary glass** inside the **Wall profile**. Cover the exposed screw heads with **Decorative caps (26)**.**



**Fig 24**

See Fig 24 for details

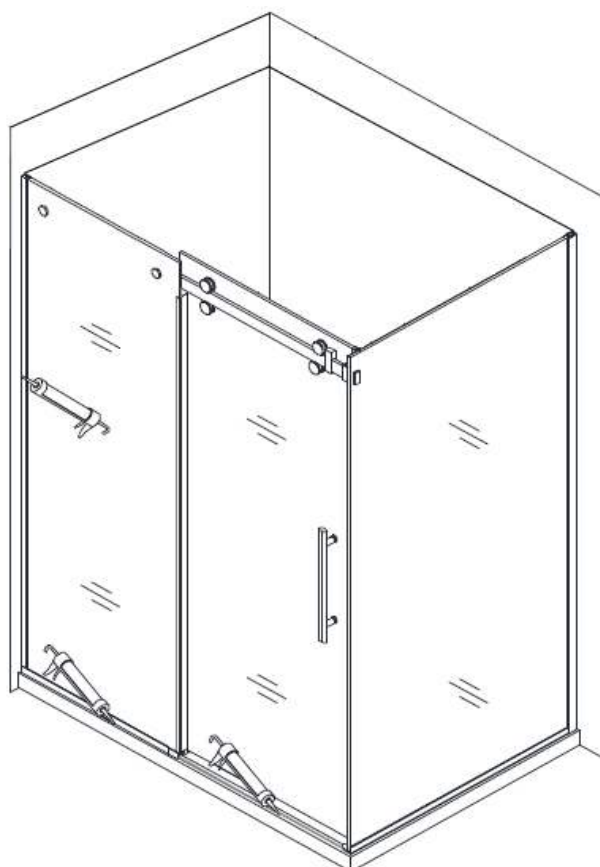
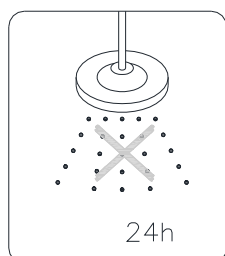
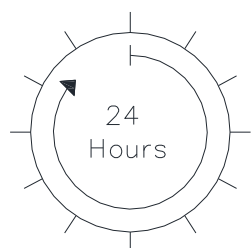
## Sealing the Shower

**24. Apply good quality mildew-resistant silicone along the connection of the stationary glass with the walls and the threshold.**

**Allow 24 hours for the silicone to fully cure before using the shower.**

See Fig 25 for details

**Fig 25**



# Product Maintenance

## Urban Shower door

Regular cleaning of your Henry Brooks bathroomware products is recommended and will help to avoid the build-up of dirt and grime that can damage and reduce the life of the product.

*To keep the product in good condition it is recommended that residual water spots should be removed from all surfaces after each use. This can be achieved by using a soft squeegee or sponge.*

For tougher stains or grease build up a solution of mild soap and hot water should be used with a soft cotton or microfibre cleaning cloth.

**To protect your product cleaning solutions that contain the following should be avoided:**

- Abrasives
- Acid or alkaline
- Harsh chemicals and disinfectants
- Alcohol
- Bleach
- Peroxides
- Ammonia
- Citrus
- Solvents

*Carefully read all instructions of cleaners before applying to product surfaces*

Many bathroom cleaners may contain chemicals that could adversely affect the finish so should only be used with caution at the consumers risk.

### **Recommended cleaning procedures:**

Acrylic surfaces (shower trays, wall liners, baths and spa baths)

To clean acrylic surfaces, use non-abrasive soap and water or a mild detergent. Abrasive products, such as Liquid Jif, are not suitable. It is recommended that the product surface is wiped dry after each use to prevent the build-up of soap and scum.

### **Glass (shower doors etc.)**

Glass is porous, and this provides an ideal surface for grime to adhere. This can result in permanent staining of the glass.

It is recommended that the glass surfaces are rinsed with hot water and then a squeegee or dry towel is used to dry the glass after each use.

### **Aluminium extrusions (shower door frames)**

Regular wash down the aluminium extrusions with a solution of warm water and mild soap to prevent the build-up of grime. Grime build up retains contaminated moisture which can result in a chemical attack of the surface over time.



116A Harris Road, East Tamaki,  
Auckland  
Ph: 09 913 3110  
[sales@henrybrooks.co.nz](mailto:sales@henrybrooks.co.nz)

Auckland  
[www.henrybrooks.co.nz](http://www.henrybrooks.co.nz)