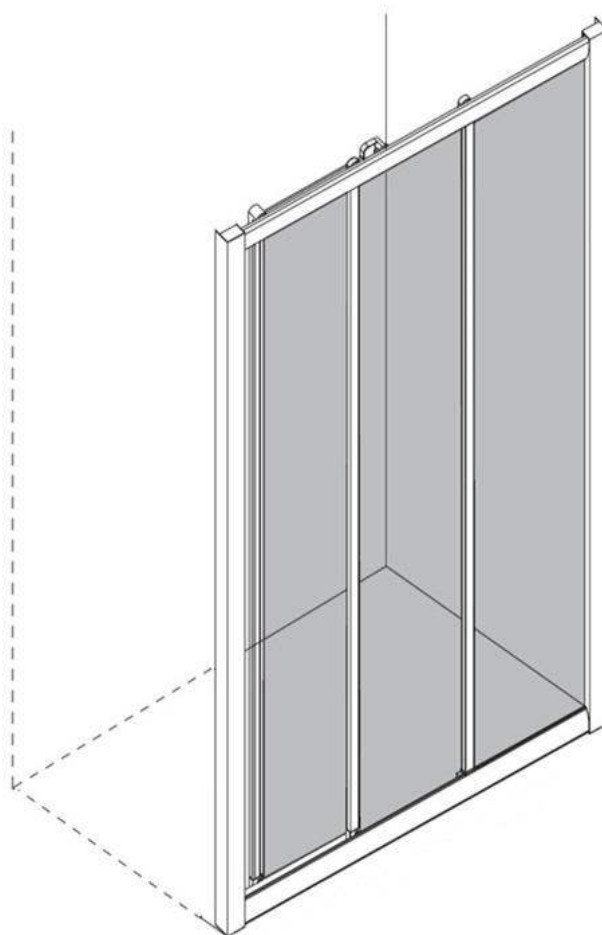




## Sliding 3 Panel Shower Door - Installation Guide



Available for LEFT and RIGHT shower installations for 900 wide showers  
WITHOUT a Return Panel

**Thank you for your Order**

Ph: 09-9133110  
116A Harris Road. East Tamaki  
Auckland  
sales@henrybrooks.co.nz  
www.henrybrooks.co.nz

# Preparation

Our products are designed to be safe, sanitary, and effective. Please read carefully the following instructions before installing your shower enclosure. If you have any questions on this shower enclosure installation, please call your local supplier.

Our product may include changes without prior notice..

**A.** After opening all the boxes, read this introduction carefully, and verify that all packed parts are complete by cross checking all components against the “Shower Door Components (Pg5)”. Examine for shipping damage. If the unit has been damaged or has a finishing defect, please contact your local supplier within 3 days.

**B.** Please note that you should consult your local building codes regarding installation and compliance standards. Building and plumbing codes vary by location, and your local dealers or distributors are not responsible for code compliance standards for your project.

**C.** Use a competent and licensed (if required by local code) plumber for all plumbing installation.

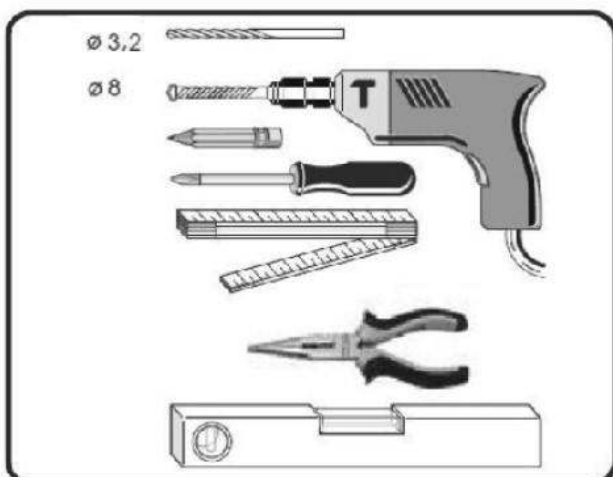
**D.** Please ensure that prior to installation the floor or shower tray step is level, if it is not level you will need to be very careful with installing the glass panels and may have other issues. Also make sure the walls are at right angles to the floor step. While some adjustment of the frame to the wall is possible, irregular floor level or improper angle of the side walls will result in issues for your installation.

## \*Notes\*

Some adjustments and drilling will be necessary during the installation process.

Some of the tools below may not be needed for your specific installation.

## Tools Required



## Recommended Wall Framework

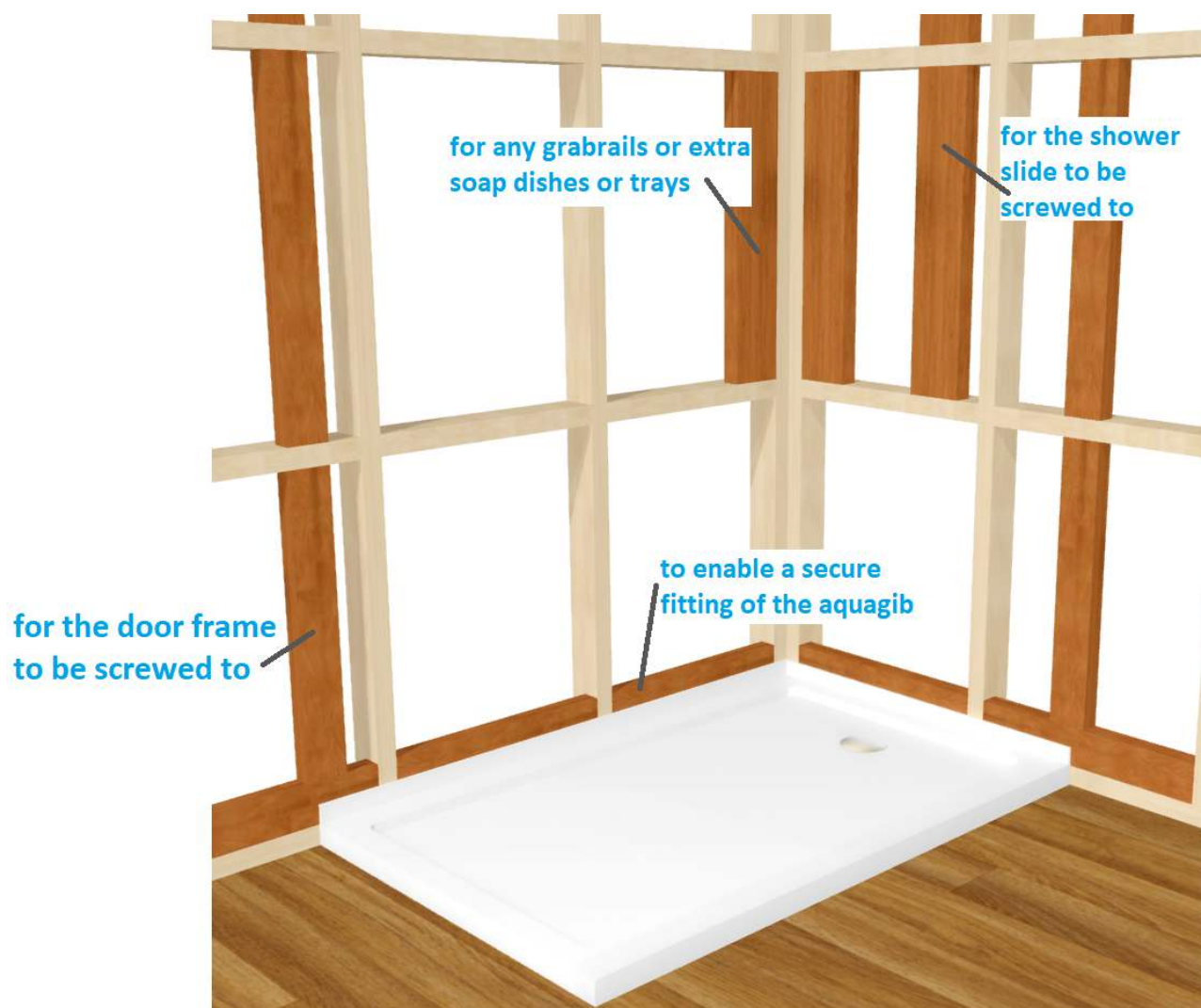
To ensure a stable shower door installation we recommend installing extra framework where your shower door contacts the wall as shown in the image below.

With the shower tray in place determine the position of any extra framing.

To see separate tray and liner instructions, go to link below

<https://www.henrybrooks.co.nz/installation-instructions/>

In this image the Std framing is lighter in colour and the extra recommended framing is in the darker colour.



For further info on Shower tray preparation and install Click on (or copy and paste into a browser)

<https://www.youtube.com/watch?v=K38V9-wUvHg>

## Recommendations before you start

You should consult your local building codes on questions on installation compliance standards.

Building and plumbing codes vary by location, and our local dealers or distributors are not responsible for code compliance standards for your project.

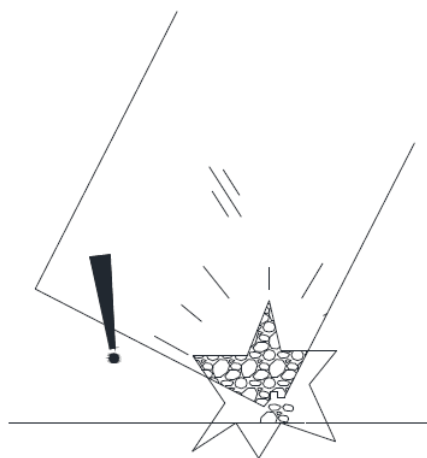
**Supplied Wall anchors are for use on concrete walls and are NOT required for standard timber stud construction installations where appropriate wood has been fitted.**

### Please Note

The glass panels are tempered Safety Glass to the NZ/AS 2208.1996 safety standards.

When leaning them against a wall always protect the bottom edges and do not knock a corner against a hard surface as the glass panel may shatter.

Caution!

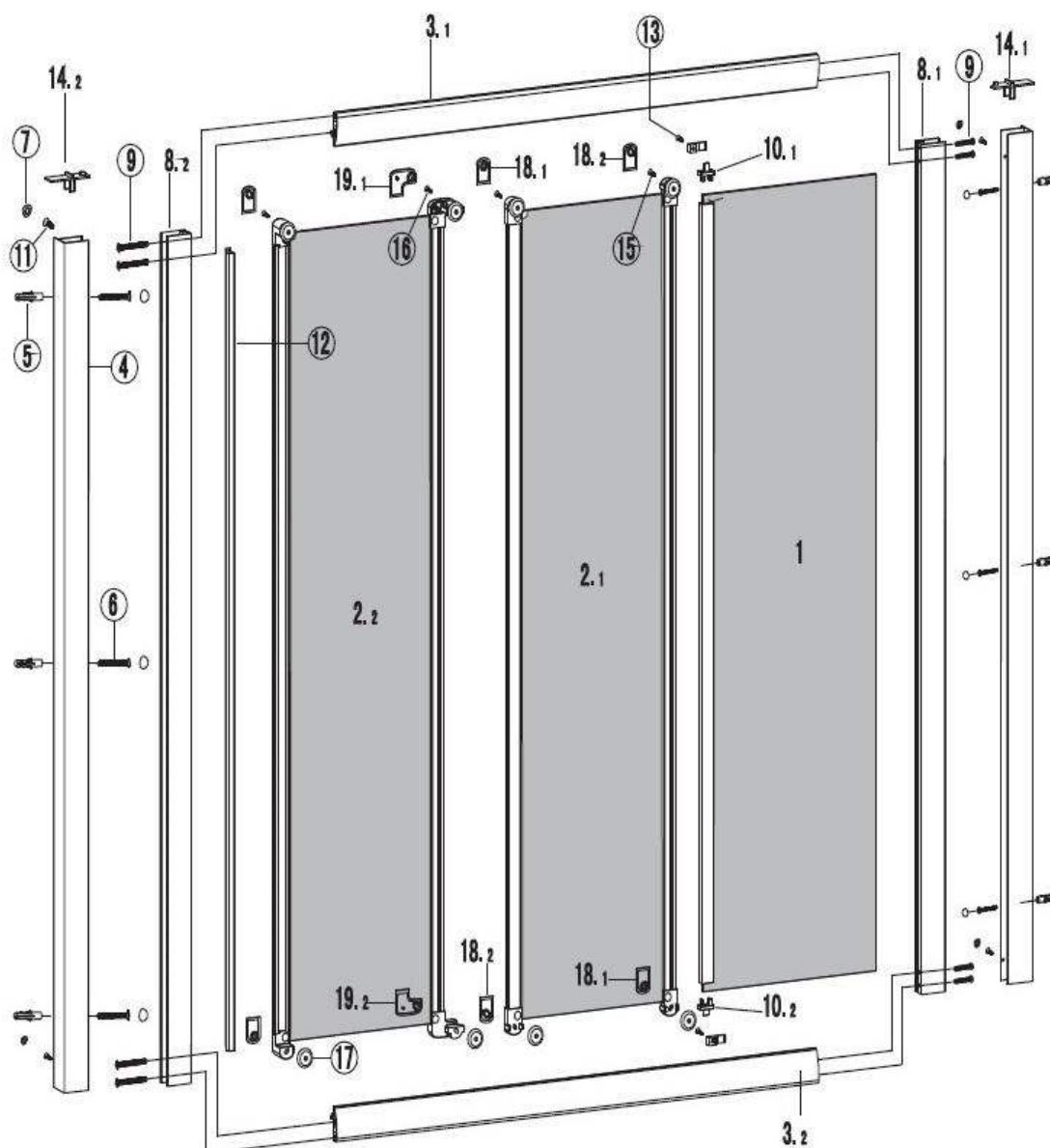


**These instructions assume that your plumbing, shower tray and wall linings are already installed level, plumb and square.**

## Installation Sequence

- 1st Install the Door Frame
- 2nd Fit fixed Glass Panel
- 3rd Fit the Sliding door panels

## 3 Panel Sliding Shower Door Components



NO.	Designation	Pieces	7		X11	13		X2	
3.1		X1	8.1		X2				
1		X1	8.2						
2.1		X1	9		X9	14.1		X1	
2.2		X1	10.1		X1	14.2		X1	
3.2		X1	10.2		X1	15		M4X12	X4
4		X2	11		X5	16		M4X25	X4
5		Ø8	X7			17			X8
6		ST4X35	X7	12		X1	18.1		X3
							18.2		X3
							19.1		X1
							19.2		X1

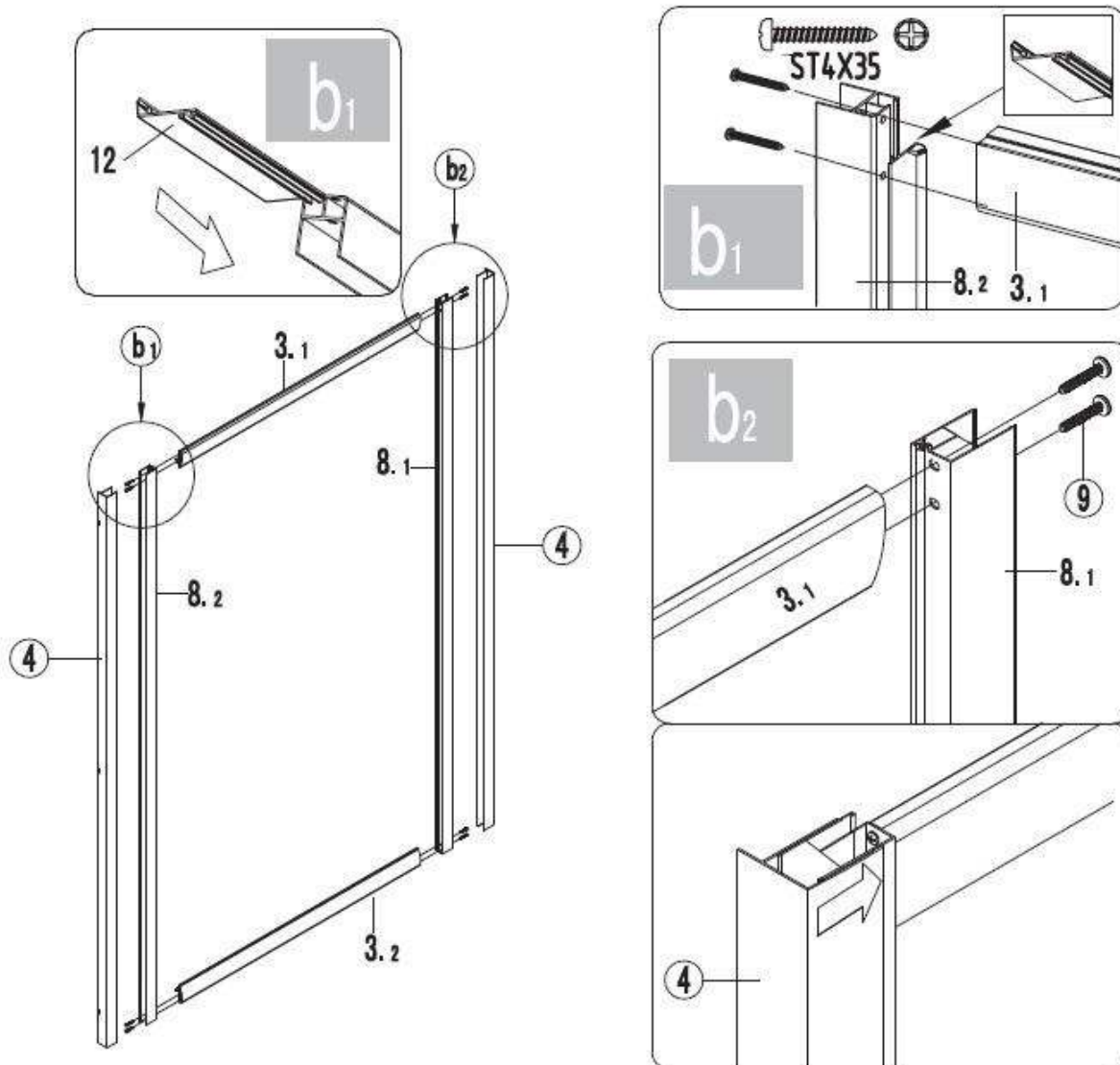
Items 3.1 and 3.2 are assembled with parts 10.1, 10.2, 15, 16 and 17 already attached



# Door Frame Assembly

Assemble **Top and Bottom Rails (3.1 and 3.2)** to **Side Channels (8.1 and 8.2)** using **screws (9)** The door is reversible i.e. the top is the same as the bottom, keep tracks inside.

Clip in the **Magnet (12)** into **channel (8.1)** on the opposite side of the frame with the magnet to the inside. Image b1 below.



**We now need to determine which way up to fit the frame to the opening.**

One side of the door frame has a clear rubber gasket already inserted into the extrusion.

This is the side that the **Fixed panel (1)** of the 3 panel slider will be fitted into.

This can be fitted on the left or right, turn the frame upside down keeping the tracks on the inside.

Fix 1 of **wall channels (4)** vertically to your wall holding the channel against the tray upstand or 10mm from the front of the shower tray, ensuring the flange is on the inside of your shower.

## Frame to Wall Channels and/or Return Panel

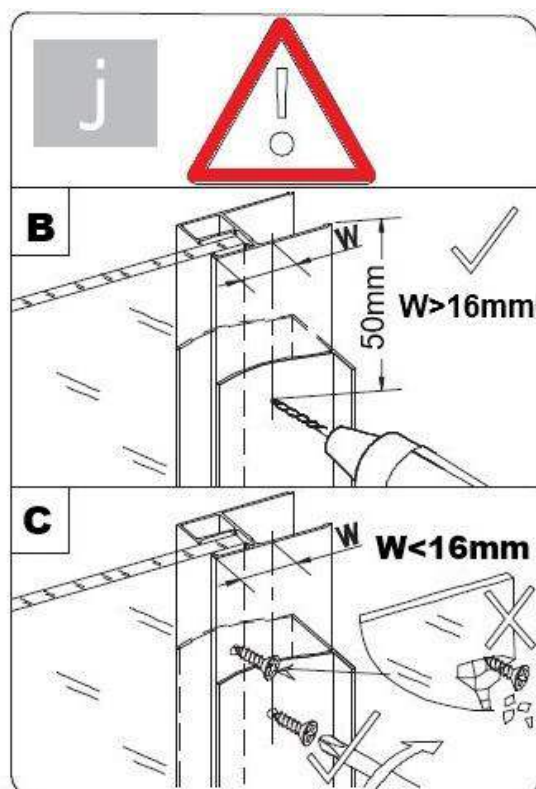
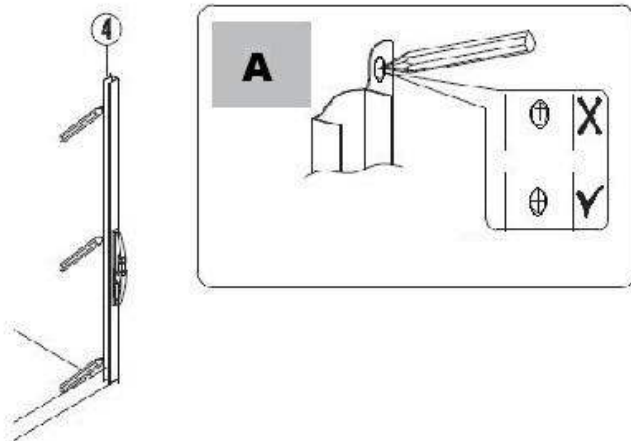
Push the other **wall channel (4)** onto your door frame on the opposite side wall, then present the door frame into position fitting inside the fitted **wall channel (4)** previously fitted.

Then pull the door and wall channel (4) up against the front tray upstand or 10mm from the front of the tray checking you are positioning it both vertically and central in both directions before fixing in place.

Fix the door frame to the wall receivers on both sides with the short screws **ST4x10(11)** provided and snap on the **cover caps (7)** provided.

Check again that everything is plumb and level.

Fix the wall channels through the flange on the inside of the channel as in **(A)** below.



### Fixing door frame to the wall channels (4)

You need to make sure your screw does not hit the glass in the frame.

To be safe you need to be more than **16mm** from the edge of the frame next to the glass as shown in **B** above.

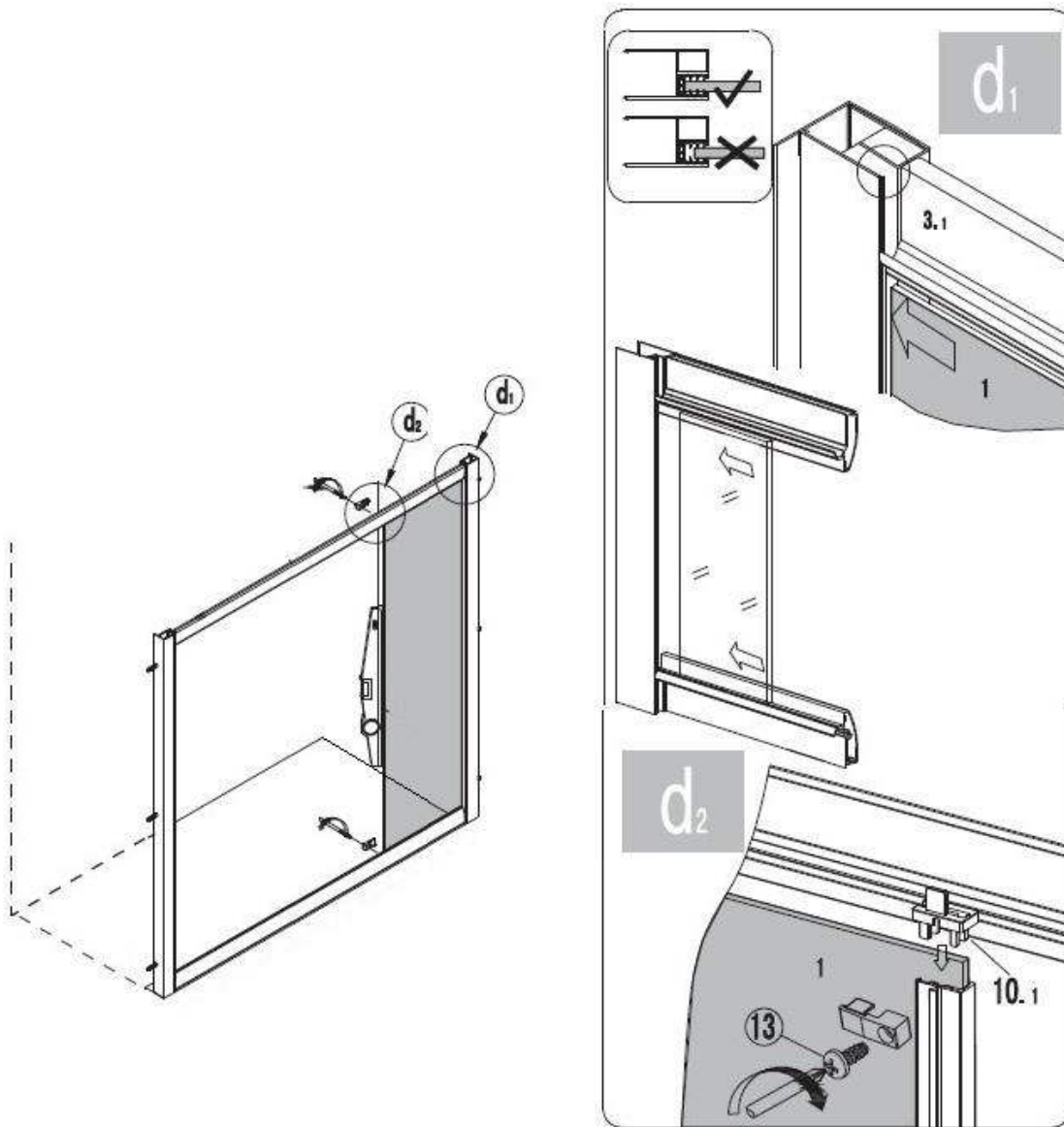
## Fitting the Glass Panels

Now to fit the door panels into the door frame, starting with the fixed panel.

The orientation has already been decided upon in page 6 previously.

Take the fixed door glass panel and from the inside of your shower, present it onto the ledge on the bottom sill and push gently into the rubber gasket in the side jamb.

This connection should not be hard to do but please do **not hit** the outside edge of the glass with anything hard. It should just push into place quite easily as shown in d1 below.



You now need to secure this glass panel into position with the two **metal clips (13)** and screws. Have a close look before you start this process to see how the clips mate with the glass panel on the top and bottom sills.



## Fitting the 2nd and 3rd glass Panels

You now need to secure this glass panel into position with the two **metal clips (13)** and screws. Have a close look before you start this process to see how the clips mate with the glass panel on the top and bottom sills.

To install the two sliding door panels we first need to loosen the wheel screws on the doors so that the wheels are floppy. This will enable the wheels to 'clip over' the top and bottom cill extrusions.

Working from **inside the shower box**,

Starting with the **2nd (middle) panel (2.1)** and hook it over the wheel groove in the top rail. The door should now just hang in place.

Gently push the bottom wheels of this middle panel under the lip on the bottom sill to engage with the door frame.

Once you have done this with some slight pressure, bow the middle panel towards you ( from inside the shower ) to move the edge of panel 2 over the edge of the existing fixed panel. This engages the collection tabs enabling each door to move together when opening and closing

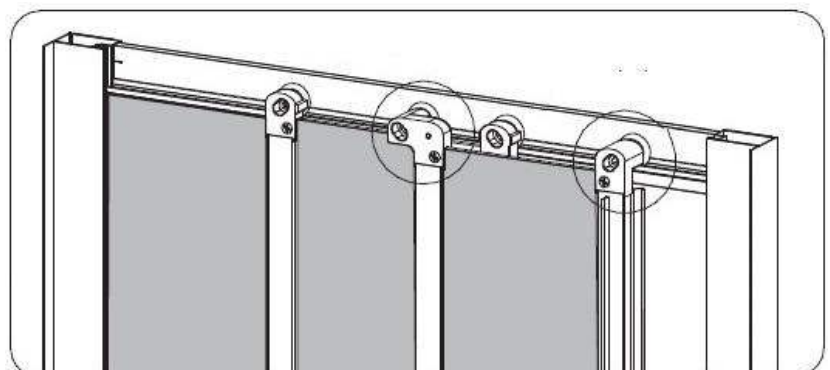
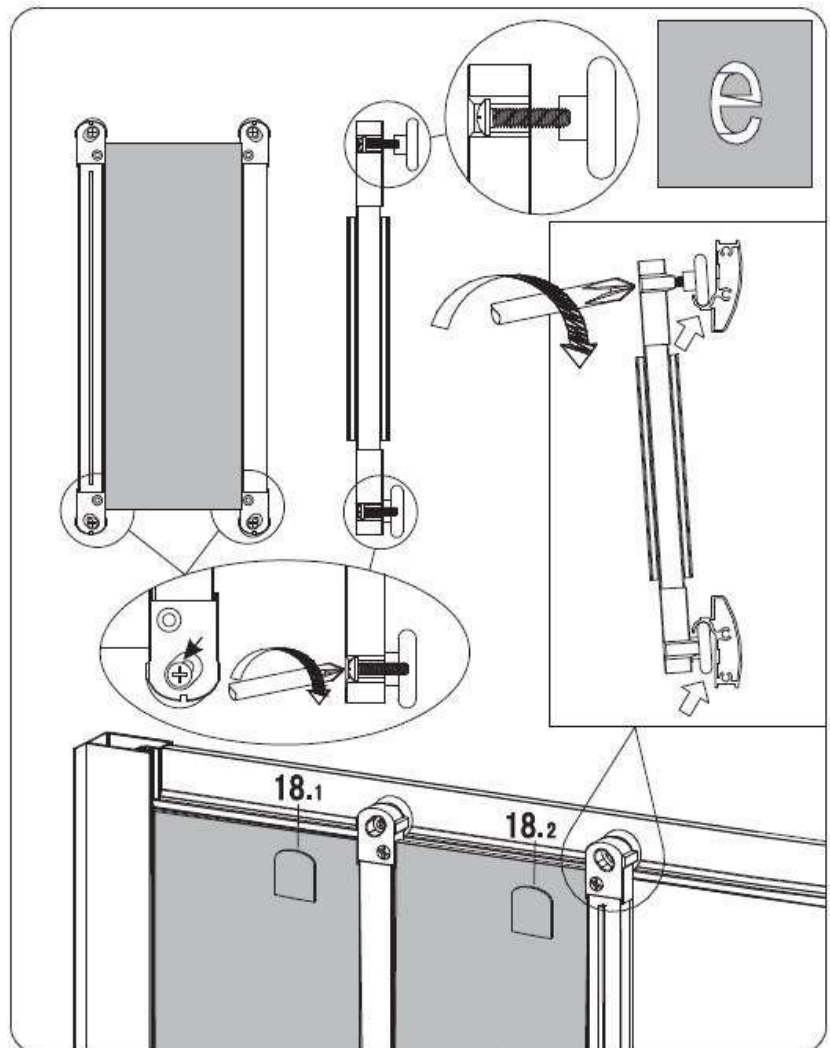
Tighten the screws while checking the door is running parallel to the fixed glass panel.

Fit **covers (18.1) and (18.2)** to the top and bottom of the door on to the **3rd panel (2.2)**

This you will need to overlap this panel, as you install, with the one you have just installed.

Loosen all 4 screws on the wheels and lift the door onto the top rail. Gently push the bottom wheels of this 3rd panel under the lip on the track of the bottom sill to engage with the door frame.

Tighten wheel screws and fit the **Caps (19.1) and (19.2)**



# Sealing Frame to Shower Walls

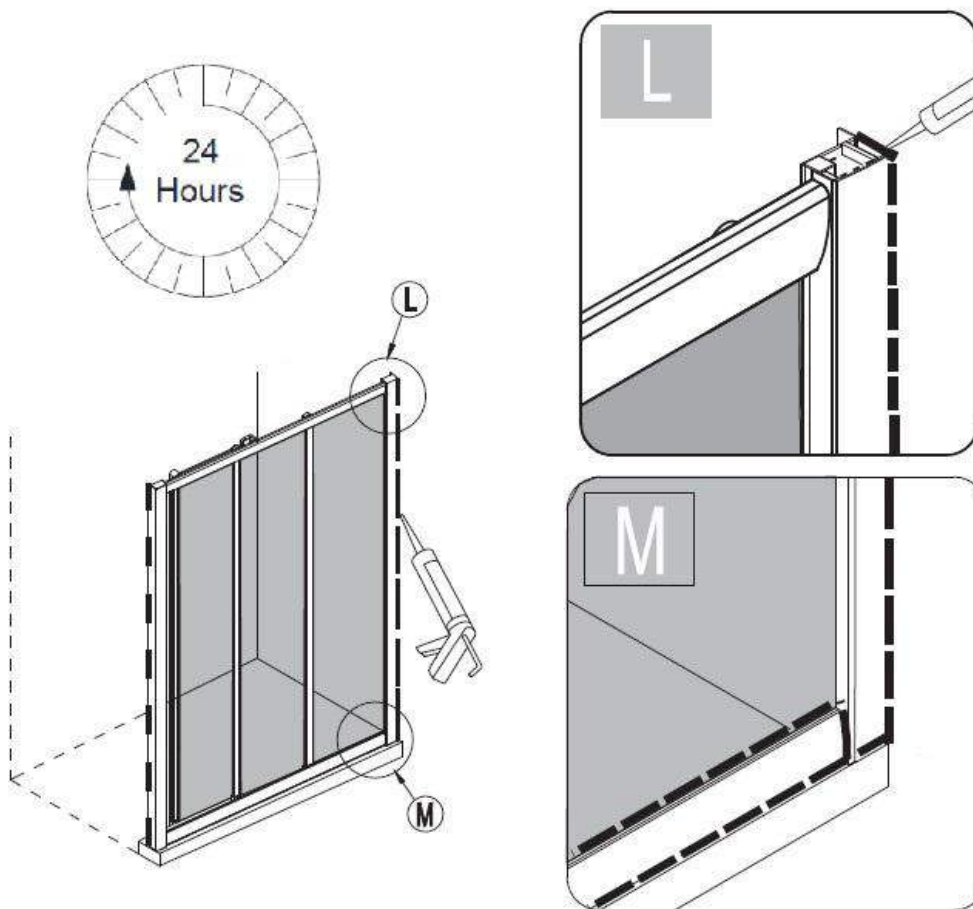
11. The surfaces need to be clean and free of debris before applying Silicone Sealant (not Supplied). Seal the **OUTSIDE EDGES ONLY** of the frame to your wall lining.

If you are using our 4 Lip Shower Tray you will not need to Seal along the bottom of the door.

If you want to fill the gap please go to

<https://www.henrybrooks.co.nz/product/4-lip-shower-tray-seal/> to buy the Tray Seal.

**\*NOTE: No Silicone should be applied to the inside edges of the shower\***



**Allow 24 hours for the silicone to cure before using the shower.**

**Congratulations, You have now achieved a Professional Standard Installation of your shower door.**

Ph: 09-9133110  
116A Harris Road. East Tamaki  
Auckland  
sales@henrybrooks.co.nz  
www.henrybrooks.co.nz